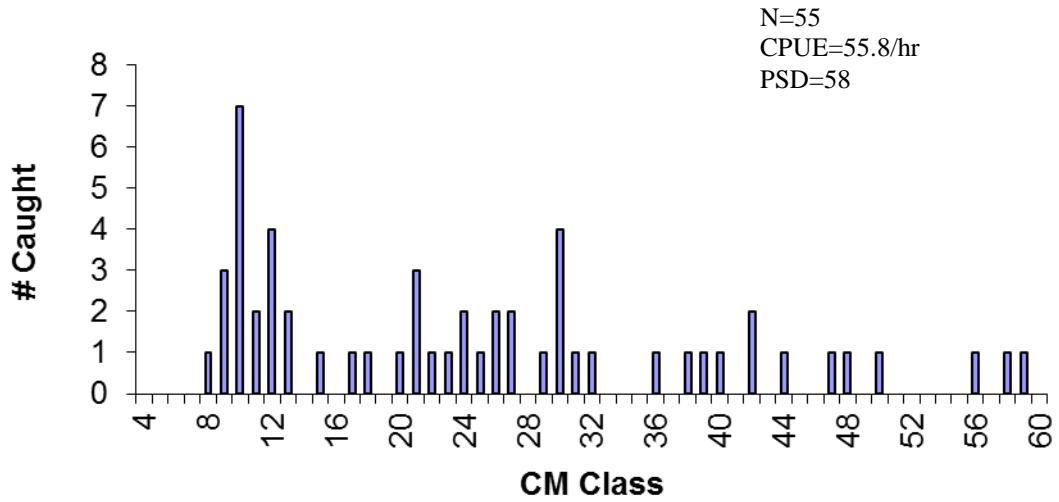
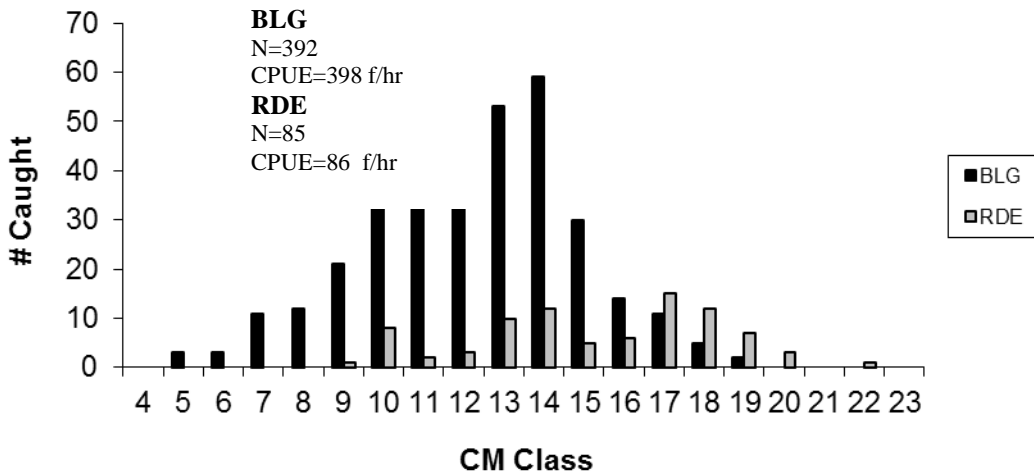


## Nottoway Falls Lake – 2016



**Figure 1.** Length-frequency distribution for Largemouth Bass collected by electrofishing Nottoway Falls Lake in April 2015.



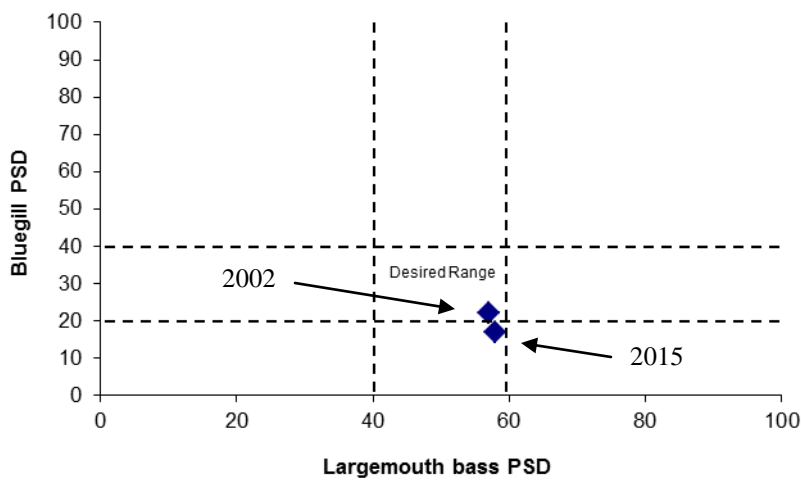
**Figure 2.** Length-frequency distribution for Bluegill and Redear Sunfish collected by electrofishing Nottoway Falls Lake in April 2015.

**Table 1.** Electrofishing CPUE (#/hr) data collected from springtime electrofishing at Nottoway Falls Lake.

Species	Year	Effort	Young	Stock	Quality	Prefer	Mem	Total
<b>LMB</b>			<b>(0-19cm)</b>	<b>(20-29cm)</b>	<b>(30-37cm)</b>	<b>(38-50cm)</b>	<b>(≥51cm)</b>	
	2015	3548	22.3	14.2	7.1	9.1	3.0	55.8
	2002	3560	16.2	18.2	9.1	14.2	1.0	58.7
<b>BLG</b>			<b>(0-7cm)</b>	<b>(8-14cm)</b>	<b>(15-19cm)</b>	<b>(20-24cm)</b>	<b>(≥25cm)</b>	
	2015	3548	17	318	63	0	0	398
	2002	1800	16	138	38	0	0	192
<b>RDE</b>			<b>(0-9cm)</b>	<b>(10-17cm)</b>	<b>(18-22cm)</b>	<b>(23-27cm)</b>	<b>(≥28cm)</b>	
	2015	3548	1	62	23	0	0	86
	2002	1800	0	26	0	0	0	26
<b>BLC</b>			<b>(0-12 cm)</b>	<b>(13-19 cm)</b>	<b>(20-24 cm)</b>	<b>(25-29 cm)</b>	<b>(≥30 cm)</b>	
	2015	3548	1	12	21	2	0	37
	2002	3560	1	18	4	0	0	23

**Table 2.** Proportional and relative stock indices for Largemouth Bass, Redear Sunfish, and Bluegill collected during springtime electrofishing in Nottoway Falls Lake.

Species	Year	PSD	RSD(P)	RSD(M)
<b>LMB</b>	2015	58	36	9
	2002	57	36	2
<b>BLG</b>	2015	17	0	0
	2002	22	0	0
<b>RDE</b>	2015	27	0	0
	2002	0	0	0
<b>BLC</b>	2015	66	6	0
	2002	18	0	0



**Figure 3.** Largemouth Bass/Bluegill PSD relationship based on April 2015 electroshocking surveys at Nottoway Falls Lake.

### Methods

- Four runs (0.99 hrs) of daytime, boat electrofishing were completed on 28 April 2015 for community assessment and Largemouth Bass population dynamics information. Community assessment was performed on all runs. Water temperature was 16° C.

### Key Findings

- The Largemouth Bass size distribution at Nottoway Falls Lake represents all size classes but at low densities. Fish up to 595 mm (23 inches) were sampled in 2015 and three fish sampled were larger than 500 mm (20 inches).
- Relative abundance (CPUE = 55.8 f/hr) was lower than average for Southside reservoirs but there were no recent samples to allow comparison of bass abundance. Although largemouth density was low in 2015, larger bass were well represented with a CPUE-P of 9.1 f/hr and a CPUE-M of 3.0 f/hr. 40% of all bass caught were observed to be in the Young size class with a CPUE-Y of 22.3 f/hr. This strong year class will hopefully contribute to angler success for several years.
- Size structure indices for Nottoway Falls are in desired ranges, reflecting a size distribution that has all size classes represented (albeit in low abundance). Proportional Stock Density (PSD) is slightly higher than average for Southside VA reservoirs at 58 and is driven by relatively few largemouth in the Stock size class.

Relative Stock Density (RSD) for Preferred bass is 36 and RSD-M is 9. Both reflect relatively high densities of bass greater than 380 mm (15 inches).

- Bluegill and Redear Sunfish were dense but showed poor size distribution at Nottoway Falls. Bluegill CPUE was 398 f/hr and redear CPUE was 86 f/hr but no Bluegill were greater than 200 mm (8 inches) and very few redear were either. Both populations were dominated by individuals in the Stock size class. This should provide excellent forage for bass but is not providing a quality fishery for bream.
- Size structure indices for Bluegill were low with a PSD of 17 and no measurable RSD values. Redear Sunfish PSD was better with a value of 27 but like Bluegill, there were no measurable RSD values due to the dominance of small fish in the population.
- Black Crappie were present in the reservoir at low densities. The population is dominated by fish less than 250 mm (10 inches) and total CPUE was 37 f/hr. Most crappie in the population were in the Quality size range so anglers do have an opportunity to catch crappie greater than 200 mm (8 inches).

### **Management Recommendations**

- Monitor Largemouth Bass population density and size structure as needed to track any changes in the populations of bass and sunfish.
- Continue to stock 10 Channel Catfish per acre annually to maintain the fishery.

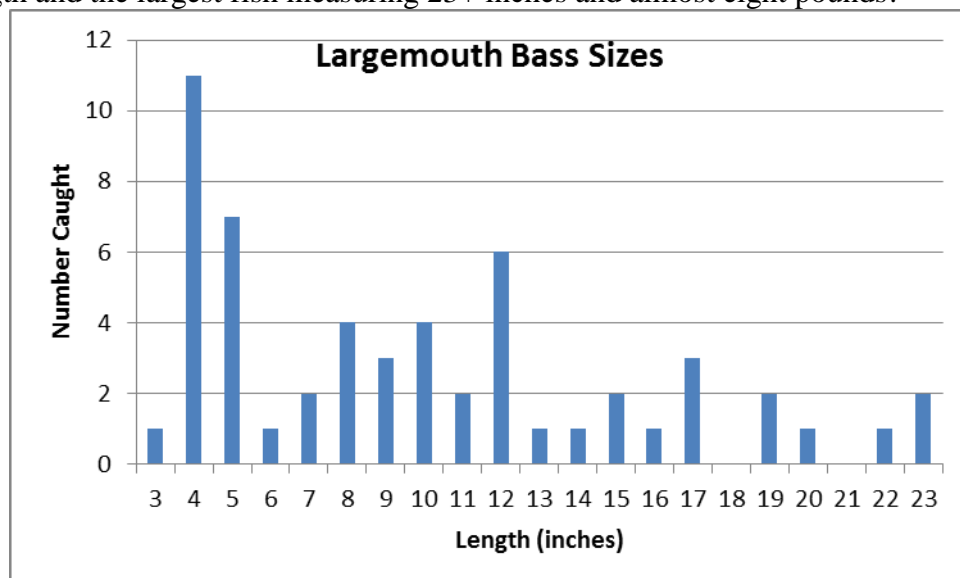


## Nottoway Falls Lake 2016

Nottoway Falls Lake is a 60-acre impoundment located in Lunenburg County, Virginia. The lake is owned by the Town of Victoria and serves as a drinking water supply reservoir. Fisheries management has been provided by the Virginia Department of Game and Inland Fisheries (VDGIF). Nottoway Falls Lake is located north of the town of Victoria on the Lunenburg/Nottoway County line and offers anglers fishing opportunities in a picturesque, rural setting. The falls below the dam offer a unique and beautiful section of the Nottoway River with a large gradient drop and exposed bedrock features. Gasoline engines are not allowed at Nottoway Falls Lake but electric motors can get you around this reservoir. The reservoir is a mainstream impoundment of the Nottoway River and is long, narrow, and shallow. Habitat in the lake consists of natural woody debris and aquatic vegetation. Other prohibited activities at Nottoway Falls Lake include swimming, open-air fires, trotlines, fishing tournaments involving prizes, littering, waterfowl hunting, camping, and seining.

Anglers fishing Nottoway Falls are likely to catch Largemouth Bass, Channel Catfish, Bluegill, Redear Sunfish (AKA shellcracker), Chain Pickerel, and Black Crappie. Largemouth Bass harvest is regulated with a 12-inch minimum length limit and a five bass per day bag limit. All other fish species are regulated by statewide limits.

The Largemouth Bass fishery at Nottoway Falls Lake is average. Based on spring electrofishing samples, Largemouth Bass were historically low in abundance and 2015 was no exception. Largemouth Bass size structure is good with a few fish over 18 inches in length and the largest fish measuring 23+ inches and almost eight pounds!



Bluegill, Redear Sunfish, and crappie are common in Nottoway Falls Lake with Bluegill being the most abundant of the panfish species. Anglers can expect to catch Bluegill and redear up to 8 inches and crappie up to 10 inches. Beginning in late April, anglers should be able to catch a lot of fish as they begin to move into shallow water to spawn.

In addition to these species, the VDGIF stocks 600, 10-inch Channel Catfish every year. Natural reproduction in small lakes is generally insufficient to support a viable population so the population is supplemented through annual stockings. Fishing is generally better for catfish during the summer and at night.

Take Route 49 north out of the Town of Victoria and turn left at the county line into Nottoway Falls Lake.