

Table 1. Observations of selected animals (per 100 hours hunting) by cooperating archery hunters from 1 October to 18 November 2005 statewide, east (EBR) and west (WBR) of the Blue Ridge Mountains, and on private and public lands in Virginia.

Animal	Total Seen	State	Animals Seen/100 hrs. \pm SE			
			EBR	WBR	Private Land	Public Land
Deer (antlered)	2,305	13.88 \pm 0.89	14.74 \pm 1.10	12.41 \pm 1.52	15.00 \pm 0.90	9.06 \pm 2.60
Deer (doe)	5,858	35.28 \pm 2.21	36.00 \pm 2.75	34.05 \pm 3.73	37.96 \pm 2.57	23.55 \pm 3.27
Deer (fawn)	2,732	16.46 \pm 1.41	15.14 \pm 1.52	18.72 \pm 2.79	17.98 \pm 1.63	9.89 \pm 2.33
Deer (unknown)	2,087	12.57 \pm 0.94	11.82 \pm 1.15	13.87 \pm 1.59	13.94 \pm 1.07	6.77 \pm 1.31
Gray Squirrel	12,036	72.50 \pm 3.39	74.50 \pm 4.35	69.04 \pm 5.33	75.65 \pm 3.76	59.22 \pm 6.18
Fox Squirrel	892	5.37 \pm 0.96	0.56 \pm 0.16	13.66 \pm 2.30	5.49 \pm 1.08	4.83 \pm 1.92
Turkey (bearded)	651	3.92 \pm 0.51	3.54 \pm 0.52	4.57 \pm 1.04	4.29 \pm 0.57	2.38 \pm 0.85
Turkey (no beard)	1,525	9.19 \pm 0.96	9.36 \pm 1.29	8.89 \pm 1.42	10.07 \pm 1.14	5.44 \pm 1.39
Turkey (unknown)	1,562	9.41 \pm 1.17	8.11 \pm 1.34	11.64 \pm 2.16	9.35 \pm 1.29	9.73 \pm 2.85
Turkey (total)	3,738	22.52 \pm 1.93	21.01 \pm 2.28	25.10 \pm 3.48	23.71 \pm 2.24	17.55 \pm 3.41
Grouse	135	0.81 \pm 0.27	0.04 \pm 0.02	2.15 \pm 0.74	0.76 \pm 0.33	1.05 \pm 0.26
Bear (adult)	61	0.37 \pm 0.08	0.30 \pm 0.10	0.48 \pm 0.15	0.36 \pm 0.09	0.41 \pm 0.14
Bear (cub)	25	0.15 \pm 0.04	0.10 \pm 0.05	0.25 \pm 0.09	0.16 \pm 0.05	0.10 \pm 0.07
Bear (total)	86	0.52 \pm 0.11	0.40 \pm 0.13	0.72 \pm 0.21	0.52 \pm 0.13	0.51 \pm 0.17
Red Fox	204	1.23 \pm 0.19	1.49 \pm 0.27	0.79 \pm 0.23	1.38 \pm 0.23	0.60 \pm 0.26
Gray Fox	146	0.88 \pm 0.13	1.12 \pm 0.19	0.46 \pm 0.12	0.92 \pm 0.15	0.70 \pm 0.21
Coyote	87	0.52 \pm 0.14	0.29 \pm 0.07	0.93 \pm 0.37	0.60 \pm 0.17	0.19 \pm 0.08
Bobcat	33	0.20 \pm 0.04	0.20 \pm 0.05	0.20 \pm 0.07	0.22 \pm 0.05	0.13 \pm 0.08
Raccoon	302	1.82 \pm 0.19	2.25 \pm 0.28	1.08 \pm 0.22	2.03 \pm 0.23	0.89 \pm 0.24
Opossum	39	0.23 \pm 0.05	0.16 \pm 0.05	0.36 \pm 0.11	0.25 \pm 0.06	0.16 \pm 0.07
Striped Skunk	30	0.18 \pm 0.04	0.15 \pm 0.04	0.23 \pm 0.08	0.20 \pm 0.05	0.10 \pm 0.07
River Otter	12	0.07 \pm 0.03	0.11 \pm 0.05	0.00 \pm 0.00	0.09 \pm 0.04	0.00 \pm 0.00
Mink	9	0.05 \pm 0.02	0.09 \pm 0.03	0.00 \pm 0.00	0.06 \pm 0.02	0.03 \pm 0.03
Dog	302	1.82 \pm 0.25	1.81 \pm 0.27	1.84 \pm 0.49	2.05 \pm 0.29	0.86 \pm 0.30
House Cat	131	0.79 \pm 0.13	0.71 \pm 0.17	0.92 \pm 0.19	0.84 \pm 0.14	0.57 \pm 0.25
Hunter	859	5.17 \pm 0.81	4.94 \pm 1.11	5.57 \pm 1.08	4.96 \pm 0.77	6.13 \pm 2.63
Total Hunters		291	194	112	265	85
Total Hunts		4,065	2,657	1,408	3,419	643
Avg. Hrs. Per Hunt		4.08 \pm 0.04	3.95 \pm 0.04	4.33 \pm 0.07	3.93 \pm 0.04	4.89 \pm 0.10

Table 2. Observations (per 100 hours of hunting) of selected animals by cooperating archery hunters from 1 October to 18 November 2005 on private and public lands east (EBR) and west (WBR) of the Blue Ridge Mountains in Virginia.

Animal	<u>Animals Seen/100 hrs. \pm SE</u>			
	EBR		WBR	
	Private Land	Public Land	Private Land	Public Land
Deer (antlered)	15.86 \pm 1.21	6.57 \pm 1.40	13.10 \pm 1.07	10.73 \pm 4.23
Deer (doe)	37.98 \pm 3.01	21.68 \pm 4.67	37.93 \pm 4.87	24.81 \pm 4.45
Deer (fawn)	16.25 \pm 1.68	7.04 \pm 2.29	21.76 \pm 3.64	11.80 \pm 3.56
Deer (unknown)	13.08 \pm 1.25	2.61 \pm 0.84	15.84 \pm 2.04	9.56 \pm 1.90
Gray Squirrel	77.02 \pm 4.59	56.33 \pm 9.65	72.62 \pm 6.55	61.16 \pm 8.09
Fox Squirrel	0.64 \pm 0.19	0.00 \pm 0.00	16.15 \pm 3.03	8.08 \pm 3.07
Turkey (bearded)	4.01 \pm 0.57	0.16 \pm 0.16	4.90 \pm 1.32	3.88 \pm 1.35
Turkey (no beard)	10.27 \pm 1.43	2.77 \pm 1.37	9.65 \pm 1.88	7.23 \pm 2.16
Turkey (unknown)	8.56 \pm 1.49	4.91 \pm 2.63	11.08 \pm 2.47	12.97 \pm 4.26
Turkey (total)	22.83 \pm 2.51	7.83 \pm 3.45	25.63 \pm 4.57	24.07 \pm 4.82
Grouse	0.03 \pm 0.02	0.08 \pm 0.08	2.35 \pm 1.07	1.70 \pm 0.39
Bear (adult)	0.32 \pm 0.11	0.16 \pm 0.12	0.43 \pm 0.19	0.58 \pm 0.20
Bear (cub)	0.11 \pm 0.05	0.00 \pm 0.00	0.29 \pm 0.12	0.16 \pm 0.12
Bear (total)	0.43 \pm 0.14	0.16 \pm 0.16	0.71 \pm 0.29	0.74 \pm 0.25
Red Fox	1.60 \pm 0.29	0.63 \pm 0.51	0.88 \pm 0.31	0.58 \pm 0.28
Gray Fox	1.14 \pm 0.21	1.03 \pm 0.45	0.45 \pm 0.15	0.48 \pm 0.15
Coyote	0.30 \pm 0.08	0.16 \pm 0.10	1.26 \pm 0.52	0.21 \pm 0.11
Bobcat	0.21 \pm 0.05	0.16 \pm 0.11	0.24 \pm 0.09	0.11 \pm 0.11
Raccoon	2.37 \pm 0.31	1.34 \pm 0.48	1.28 \pm 0.29	0.58 \pm 0.23
Opossum	0.17 \pm 0.05	0.08 \pm 0.08	0.43 \pm 0.15	0.21 \pm 0.10
Striped Skunk	0.16 \pm 0.05	0.08 \pm 0.08	0.29 \pm 0.11	0.11 \pm 0.11
River Otter	0.13 \pm 0.06	0.00 \pm 0.00	0.00 \pm 0.00	0.00 \pm 0.00
Mink	0.09 \pm 0.03	0.08 \pm 0.07	0.00 \pm 0.00	0.00 \pm 0.00
Dog	1.90 \pm 0.30	1.19 \pm 0.53	2.38 \pm 0.64	0.64 \pm 0.36
House Cat	0.73 \pm 0.18	0.63 \pm 0.39	1.09 \pm 0.23	0.53 \pm 0.33
Hunter	4.50 \pm 0.95	8.15 \pm 6.13	5.94 \pm 1.25	4.78 \pm 1.58
Total Hunters	183	31	94	54
Total Hunts	2,377	279	1,042	364
Avg. Hrs. Per Hunt	3.89 \pm 0.04	4.53 \pm 0.14	4.04 \pm 0.07	5.17 \pm 0.15

Table 3. Observations (per 100 hours of hunting) of selected animals by cooperating archery hunters from 1 October to 18 November 2005 within geographic regions of Virginia.

Animal	Animals Seen/ 100 hrs. \pm SE				
	Tidewater	S. Piedmont	N. Piedmont	S. Mountain	N. Mountain
Deer (antlered)	15.91 \pm 1.95	11.39 \pm 1.25	16.48 \pm 2.20	14.48 \pm 2.50	9.70 \pm 1.06
Deer (doe)	35.02 \pm 4.33	32.41 \pm 3.73	40.55 \pm 5.82	35.22 \pm 5.94	32.52 \pm 3.84
Deer (fawn)	18.31 \pm 3.18	11.35 \pm 2.00	14.90 \pm 2.15	19.65 \pm 4.40	17.51 \pm 2.93
Deer (unknown)	12.70 \pm 1.80	11.80 \pm 2.31	10.78 \pm 1.86	15.75 \pm 2.41	11.41 \pm 1.84
Gray Squirrel	55.57 \pm 4.25	72.51 \pm 6.78	99.04 \pm 9.64	62.98 \pm 8.01	76.98 \pm 5.98
Fox Squirrel	0.15 \pm 0.13	0.41 \pm 0.24	1.19 \pm 0.43	12.28 \pm 2.50	15.47 \pm 4.15
Turkey (bearded)	3.94 \pm 1.01	3.75 \pm 0.78	2.87 \pm 0.80	6.33 \pm 1.73	2.27 \pm 0.61
Turkey (no beard)	8.48 \pm 1.59	12.44 \pm 2.98	7.53 \pm 2.11	10.55 \pm 2.15	6.71 \pm 1.58
Turkey (unknown)	6.68 \pm 1.52	13.14 \pm 3.18	5.11 \pm 2.26	16.24 \pm 3.34	5.61 \pm 1.87
Turkey (total)	19.11 \pm 2.88	29.32 \pm 4.41	15.50 \pm 4.48	33.11 \pm 5.34	14.59 \pm 3.01
Grouse	0.00 \pm 0.00	0.00 \pm 0.00	0.12 \pm 0.07	2.98 \pm 1.31	1.06 \pm 0.30
Bear (adult)	0.00 \pm 0.00	0.22 \pm 0.10	0.75 \pm 0.28	0.17 \pm 0.10	0.87 \pm 0.31
Bear (cub)	0.02 \pm 0.02	0.16 \pm 0.11	0.12 \pm 0.10	0.06 \pm 0.06	0.49 \pm 0.19
Bear (total)	0.02 \pm 0.02	0.38 \pm 0.19	0.87 \pm 0.35	0.23 \pm 0.12	1.36 \pm 0.46
Red Fox	0.77 \pm 0.16	0.32 \pm 0.15	3.43 \pm 0.77	0.46 \pm 0.17	1.21 \pm 0.47
Gray Fox	1.95 \pm 0.39	0.64 \pm 0.18	0.60 \pm 0.28	0.40 \pm 0.15	0.53 \pm 0.19
Coyote	0.22 \pm 0.10	0.19 \pm 0.07	0.45 \pm 0.18	1.47 \pm 0.64	0.22 \pm 0.10
Bobcat	0.07 \pm 0.04	0.32 \pm 0.10	0.24 \pm 0.11	0.23 \pm 0.10	0.15 \pm 0.09
Raccoon	2.74 \pm 0.49	1.65 \pm 0.47	2.21 \pm 0.47	1.24 \pm 0.31	0.87 \pm 0.28
Opossum	0.17 \pm 0.07	0.16 \pm 0.07	0.15 \pm 0.10	0.38 \pm 0.14	0.34 \pm 0.17
Striped Skunk	0.10 \pm 0.06	0.25 \pm 0.11	0.12 \pm 0.07	0.12 \pm 0.08	0.38 \pm 0.15
River Otter	0.25 \pm 0.11	0.00 \pm 0.00	0.06 \pm 0.06	0.00 \pm 0.00	0.00 \pm 0.00
Mink	0.22 \pm 0.08	0.00 \pm 0.00	0.00 \pm 0.00	0.00 \pm 0.00	0.00 \pm 0.00
Dog	1.10 \pm 0.28	2.93 \pm 0.61	1.61 \pm 0.46	2.98 \pm 0.82	0.34 \pm 0.16
House Cat	0.30 \pm 0.12	0.70 \pm 0.28	1.22 \pm 0.45	0.92 \pm 0.27	0.91 \pm 0.26
Hunter	6.83 \pm 2.39	2.10 \pm 0.58	5.34 \pm 1.80	6.15 \pm 1.44	4.81 \pm 1.64
Total Hunters	80	66	69	57	57
Total Hunts	1,042	820	795	785	623
Avg. Hrs. Per Hunt	3.85 \pm 0.06	3.83 \pm 0.08	4.21 \pm 0.08	4.41 \pm 0.09	4.23 \pm 0.09

Table 4. Observations (per 100 hours of hunting) of selected animals by cooperating archery hunters by week from 1 October to 18 November 2005 in Virginia.

Animal	<u>Animals Seen/100 hrs. + SE</u>							
	Day 1 (10/1)	Week 1 (10/3-8)	Week 2 (10/10-15)	Week 3 (10/17-22)	Week 4 (10/24-29)	Week 5 (10/31-11/5)	Week 6 (11/7-12)	Week 7 (11/14-18)
Deer (antlered)	13.72 ± 1.51	10.54 ± 1.35	9.76 ± 0.97	10.57 ± 0.98	16.97 ± 1.62	17.50 ± 1.96	16.71 ± 1.50	16.16 ± 1.85
Deer (doe)	43.45 ± 4.21	33.73 ± 3.03	33.99 ± 2.91	35.37 ± 3.01	40.31 ± 3.47	32.54 ± 3.82	34.19 ± 3.59	30.33 ± 3.64
Deer (fawn)	21.06 ± 2.34	19.49 ± 2.59	17.71 ± 1.84	16.27 ± 1.65	18.61 ± 2.44	15.16 ± 2.74	10.91 ± 1.64	13.21 ± 2.24
Deer (unknown)	10.49 ± 1.73	11.53 ± 1.43	10.86 ± 1.20	13.49 ± 1.48	14.31 ± 1.60	14.46 ± 2.29	9.51 ± 0.99	17.27 ± 2.32
Gray Squirrel	74.92 ± 5.40	48.58 ± 3.56	62.18 ± 4.11	69.14 ± 3.89	75.88 ± 4.52	86.57 ± 5.40	85.04 ± 6.52	81.27 ± 6.27
Fox Squirrel	4.65 ± 1.07	4.68 ± 0.92	5.00 ± 0.99	5.83 ± 1.48	5.59 ± 1.78	3.70 ± 0.82	7.76 ± 1.82	5.65 ± 1.41
Turkey (bearded)	3.08 ± 0.81	4.08 ± 1.15	3.44 ± 0.77	4.47 ± 0.95	3.35 ± 0.84	3.82 ± 0.84	3.58 ± 0.93	6.45 ± 2.14
Turkey (no beard)	9.78 ± 2.55	12.09 ± 2.54	6.36 ± 1.47	12.44 ± 2.68	7.95 ± 1.73	7.03 ± 1.40	8.82 ± 2.20	11.07 ± 3.04
Turkey (unknown)	11.44 ± 3.35	9.75 ± 2.09	8.21 ± 1.85	11.17 ± 3.05	6.92 ± 1.34	8.79 ± 2.14	7.12 ± 1.92	16.32 ± 6.78
Turkey (total)	24.29 ± 4.54	25.91 ± 3.70	18.02 ± 2.92	28.07 ± 4.66	18.22 ± 2.59	19.64 ± 3.09	19.52 ± 3.56	33.83 ± 7.71
Grouse	1.03 ± 0.60	2.67 ± 1.89	0.79 ± 0.29	0.59 ± 0.20	0.69 ± 0.19	0.37 ± 0.15	0.17 ± 0.09	0.16 ± 0.11
Bear (adult)	1.10 ± 0.48	0.51 ± 0.19	0.38 ± 0.13	0.36 ± 0.16	0.09 ± 0.06	0.25 ± 0.10	0.38 ± 0.15	0.08 ± 0.08
Bear (cub)	0.08 ± 0.08	0.19 ± 0.13	0.11 ± 0.08	0.27 ± 0.17	0.0 ± 0.00	0.21 ± 0.14	0.17 ± 0.10	0.16 ± 0.16
Bear (total)	1.18 ± 0.51	0.70 ± 0.27	0.49 ± 0.19	0.64 ± 0.27	0.09 ± 0.06	0.45 ± 0.20	0.55 ± 0.19	0.24 ± 0.24
Red Fox	1.10 ± 0.31	0.94 ± 0.37	0.83 ± 0.21	1.09 ± 0.27	1.63 ± 0.38	1.44 ± 0.36	1.19 ± 0.31	1.83 ± 0.53
Gray Fox	0.63 ± 0.25	1.03 ± 0.25	0.64 ± 0.18	1.05 ± 0.32	0.95 ± 0.27	1.60 ± 0.39	0.47 ± 0.18	0.32 ± 0.16
Coyote	0.39 ± 0.21	0.37 ± 0.19	0.30 ± 0.14	0.41 ± 0.22	0.52 ± 0.21	0.12 ± 0.07	0.30 ± 0.17	0.72 ± 0.30
Bobcat	0.16 ± 0.11	0.14 ± 0.08	0.11 ± 0.07	0.23 ± 0.15	0.34 ± 0.12	0.25 ± 0.12	0.17 ± 0.08	0.16 ± 0.11

Table 4 (continued). Observations (per 100 hours of hunting) of selected animals by cooperating archery hunters by week from 2 October to 12 November 2004 in Virginia.

Animal	<u>Animals Seen/100 hrs. + SE</u>							
	Day 1 (10/1)	Week 1 (10/3-8)	Week 2 (10/10-15)	Week 3 (10/17-22)	Week 4 (10/24-29)	Week 5 (10/31-11/5)	Week 6 (11/7-12)	Week 7 (11/14-18)
Raccoon	2.92 ± 0.75	2.30 ± 0.54	1.74 ± 0.38	1.64 ± 0.48	2.23 ± 0.45	1.89 ± 0.40	1.07 ± 0.27	0.88 ± 0.45
Opossum	0.08 ± 0.08	0.19 ± 0.09	0.19 ± 0.08	0.55 ± 0.20	0.09 ± 0.06	0.16 ± 0.08	0.34 ± 0.16	0.24 ± 0.14
Striped Skunk	0.24 ± 0.14	0.09 ± 0.09	0.26 ± 0.11	0.09 ± 0.06	0.21 ± 0.11	0.21 ± 0.09	0.13 ± 0.07	0.24 ± 0.18
River Otter	0.08 ± 0.08	0.09 ± 0.09	0.08 ± 0.08	0.09 ± 0.09	0.09 ± 0.09	0.00 ± 0.00	0.00 ± 0.00	0.24 ± 0.14
Mink	0.00 ± 0.00	0.00 ± 0.00	0.08 ± 0.05	0.00 ± 0.00	0.09 ± 0.06	0.08 ± 0.06	0.04 ± 0.04	0.16 ± 0.16
Dog	2.37 ± 0.79	1.83 ± 0.58	1.14 ± 0.28	1.69 ± 0.42	2.96 ± 0.64	1.36 ± 0.37	2.00 ± 0.47	1.35 ± 0.56
House Cat	1.18 ± 0.35	0.66 ± 0.21	0.68 ± 0.18	0.68 ± 0.22	1.16 ± 0.28	0.70 ± 0.22	0.47 ± 0.15	1.11 ± 0.45
Hunter	7.18 ± 1.45	4.54 ± 0.83	3.86 ± 0.71	3.96 ± 0.84	4.60 ± 0.98	4.97 ± 0.95	6.95 ± 1.55	7.24 ± 1.89
Total Hunters	222	225	236	235	226	214	165	101
Total Hunts	236	571	655	587	590	612	519	295
Avg. Hrs. Per Hunt	5.37 ± 0.17	3.74 ± 0.09	4.03 ± 0.09	3.74 ± 0.09	3.94 ± 0.09	3.98 ± 0.09	4.52 ± 0.12	4.26 ± 0.13

Table 5. Doe-buck and fawn-doe ratio estimates (a) east and west of the Blue Ridge Mountains, (b) by land ownership, (c) by region, and (d) by week of survey season based on cooperating archery hunter observations in Virginia from 1 October to 18 November 2005.

(a)

Ratio	Statewide	East of BR	West of BR
Doe: Buck	2.54	2.44	2.74
Fawn: Doe	0.47	0.42	0.55

(b)

Ratio	Private	Public
Doe: Buck	2.53	2.60
Fawn: Doe	0.47	0.42

(c)

Ratio	Tidewater	S. Piedmont	N. Piedmont	S. Mountain	N. Mountain
Doe: Buck	2.20	2.85	2.46	2.43	3.35
Fawn: Doe	0.52	0.35	0.37	0.56	0.54

(d)

Ratio	Day 1	Week 1	Week 2	Week 3	Week 4	Week 5	Week 6	Week 7
Doe: Buck	3.17	3.20	3.48	3.34	2.37	1.86	2.05	1.88
Fawn: Doe	0.48	0.58	0.52	0.46	0.46	0.47	0.32	0.44

Table 6. Statewide total observations and total observations per 100 hunts of miscellaneous animals by cooperating archery hunters 1 October to 18 November 2005 in Virginia.

Animal	Total Observations	Observations / 100 Hunts
Bats	12	0.34
Beaver	8	0.23
Buzzard	16	0.45
Chipmunk	298	8.41
Crow	176	4.97
Doves	30	0.85
Ducks	86	2.43
Eagle	19	0.54
Falcon	0	0.00
Flying Squirrels	0	0.00
Geese	420	11.85
Groundhog	148	4.18
Hawk	87	2.45
Hérons	6	0.17
Miscellaneous Birds	69	1.95
Mouse	0	0.00
Muskrat	1	0.03
Nutria	0	0.00
Owl	30	0.85
Pheasant	0	0.00
Quail	97	2.74
Rabbit	92	2.60
Red Squirrel	17	0.48
Shrew	0	0.00
Sika & Other Deer	0	0.00
Snake	4	0.11
Snipe	0	0.00
Turtles	3	0.08
Weasel	1	0.03
Woodcock	25	0.71

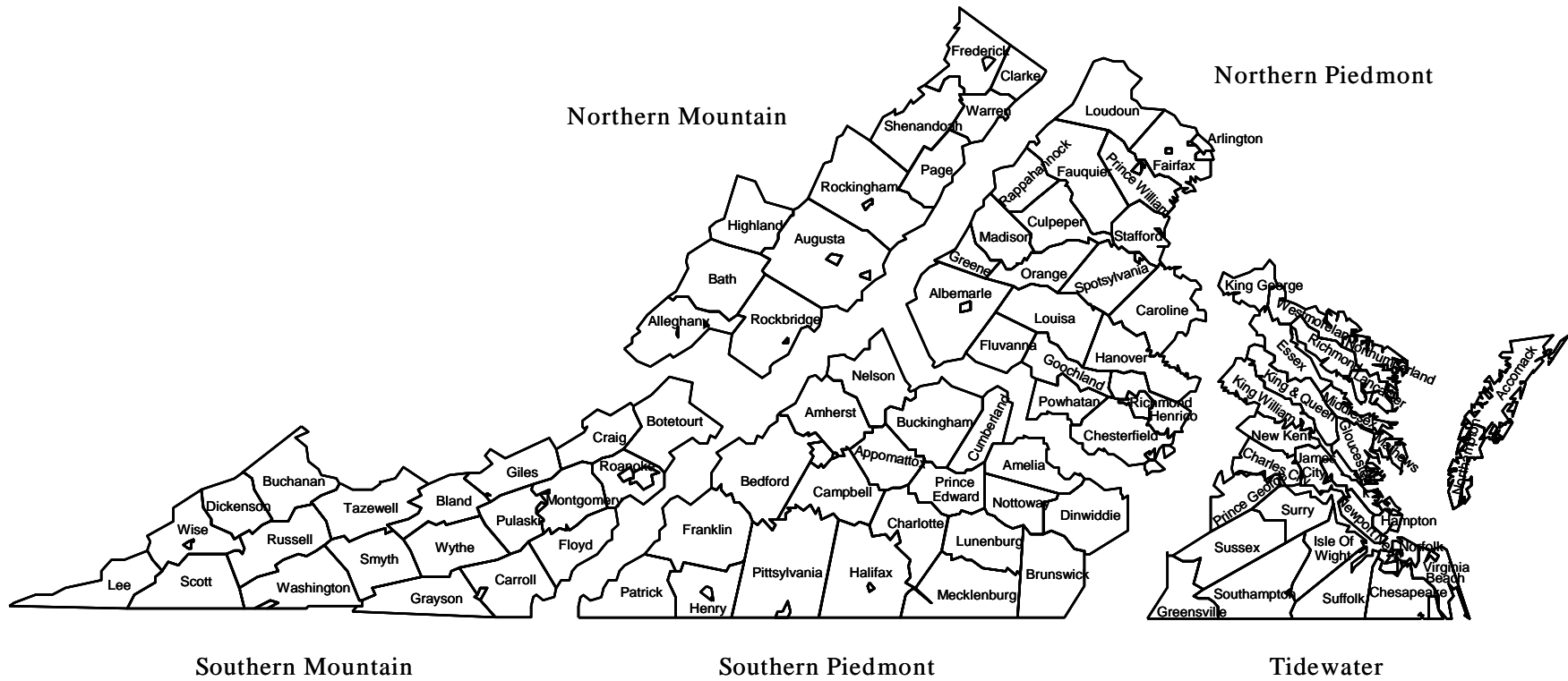


Figure 1. Geographic regions used for analyses in this report.

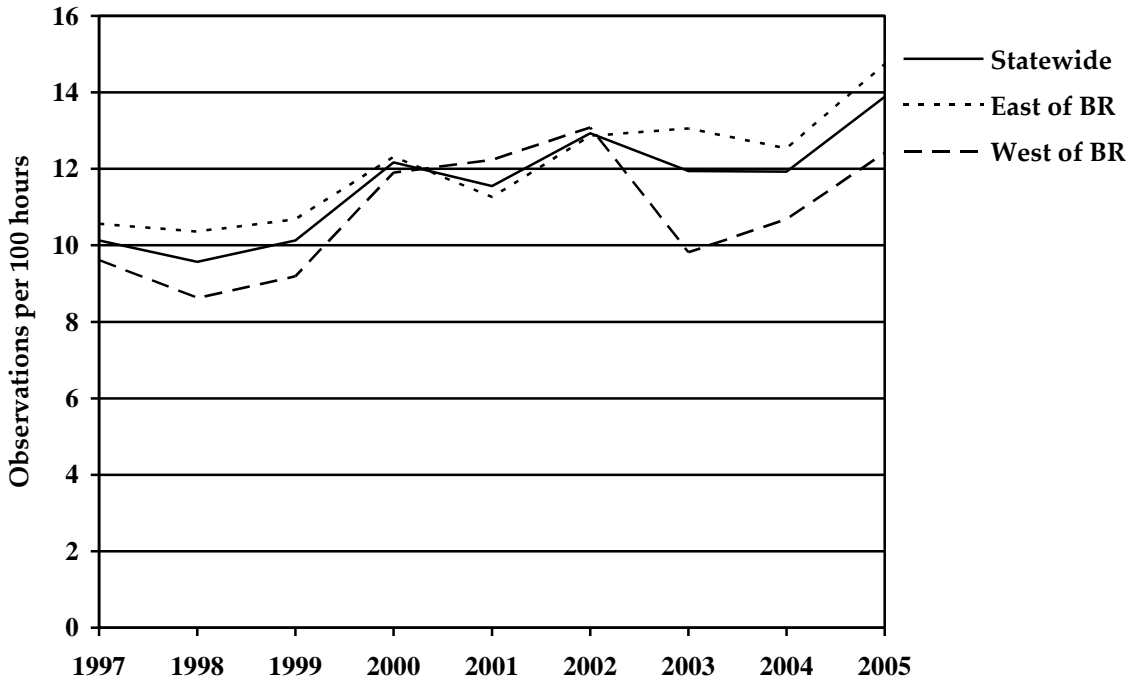


Figure 2. Antlered deer observed (per 100 hours of hunting) by cooperating early archery hunters from 1997-2005 east and west of the Blue Ridge Mountains and statewide in Virginia.

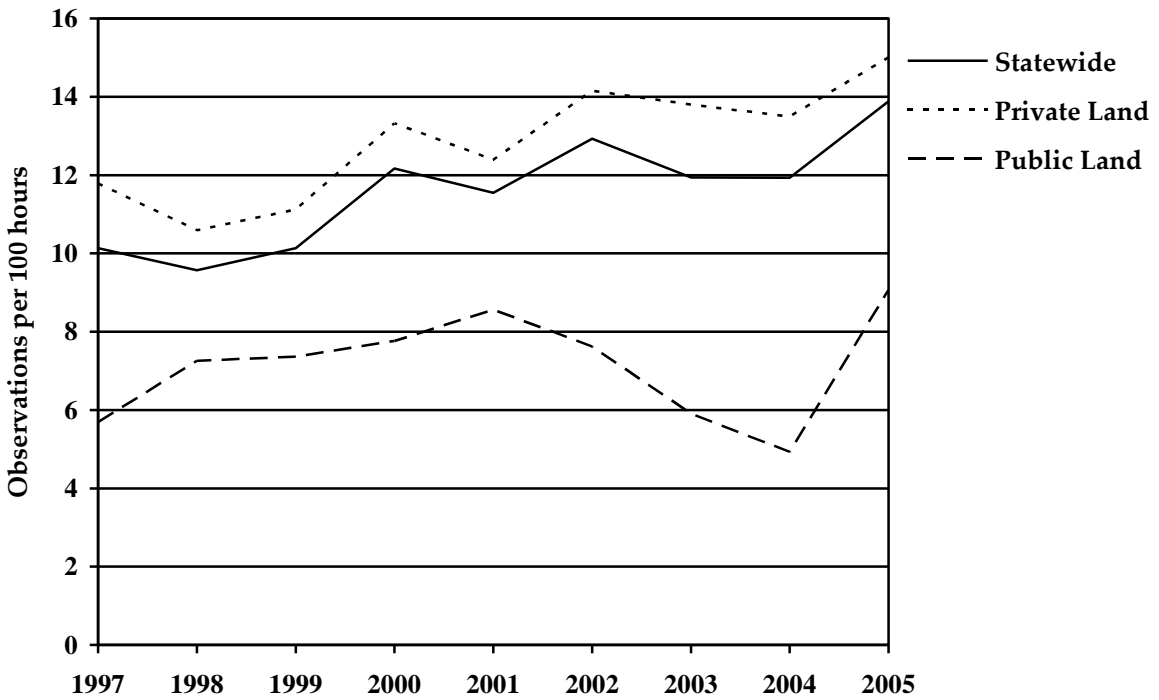


Figure 3. Antlered deer observed (per 100 hours of hunting) by cooperating early archery hunters from 1997-2005 by land ownership and statewide in Virginia.

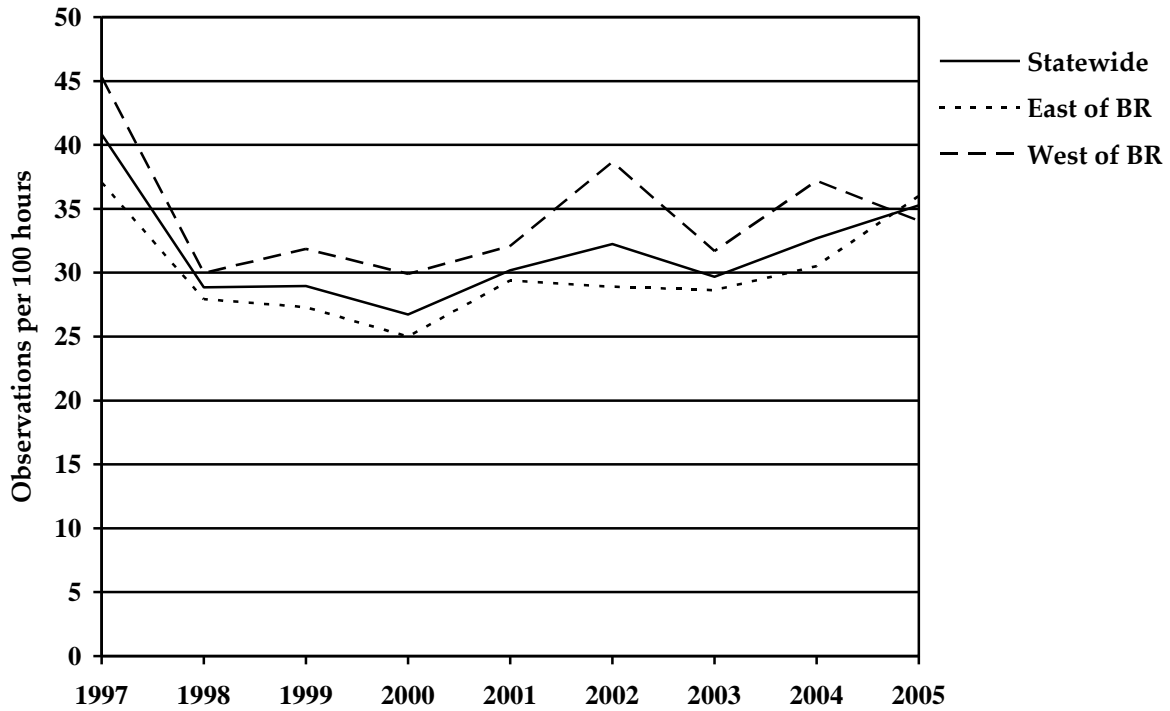


Figure 4. Doe deer observed (per 100 hours of hunting) by cooperating early archery hunters from 1997-2005 east and west of the Blue Ridge Mountains and statewide in Virginia.

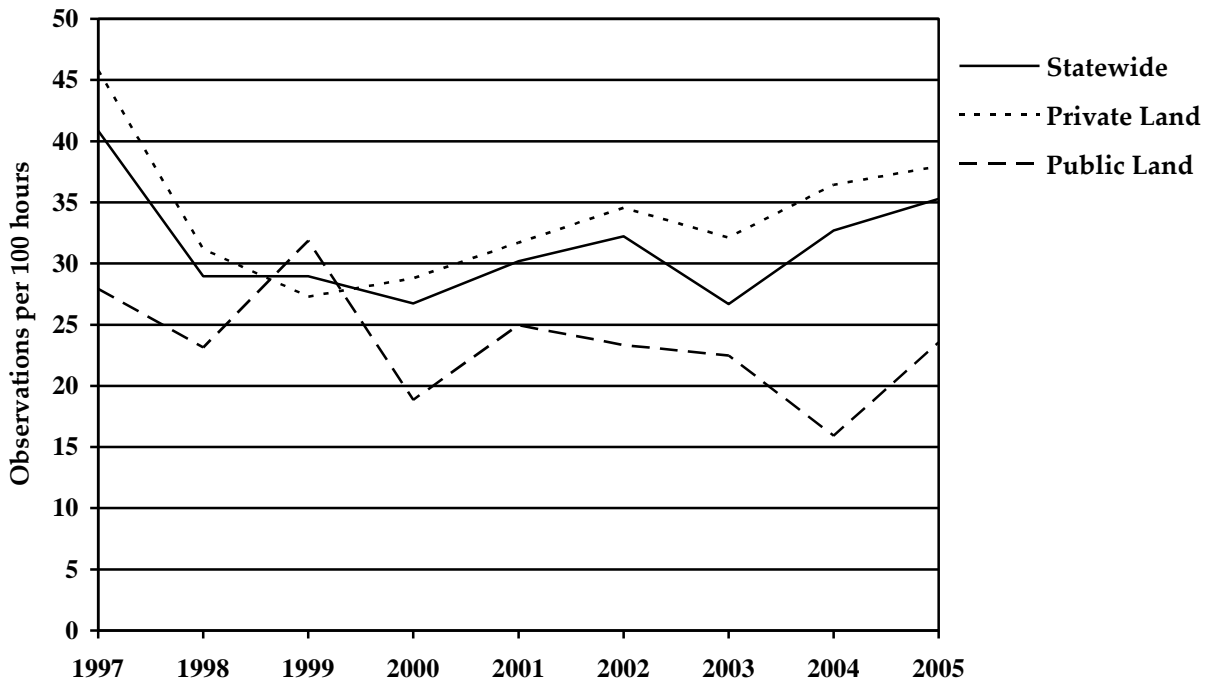


Figure 5. Doe deer observed (per 100 hours of hunting) by cooperating early archery hunters from 1997-2005 by land ownership and statewide in Virginia.

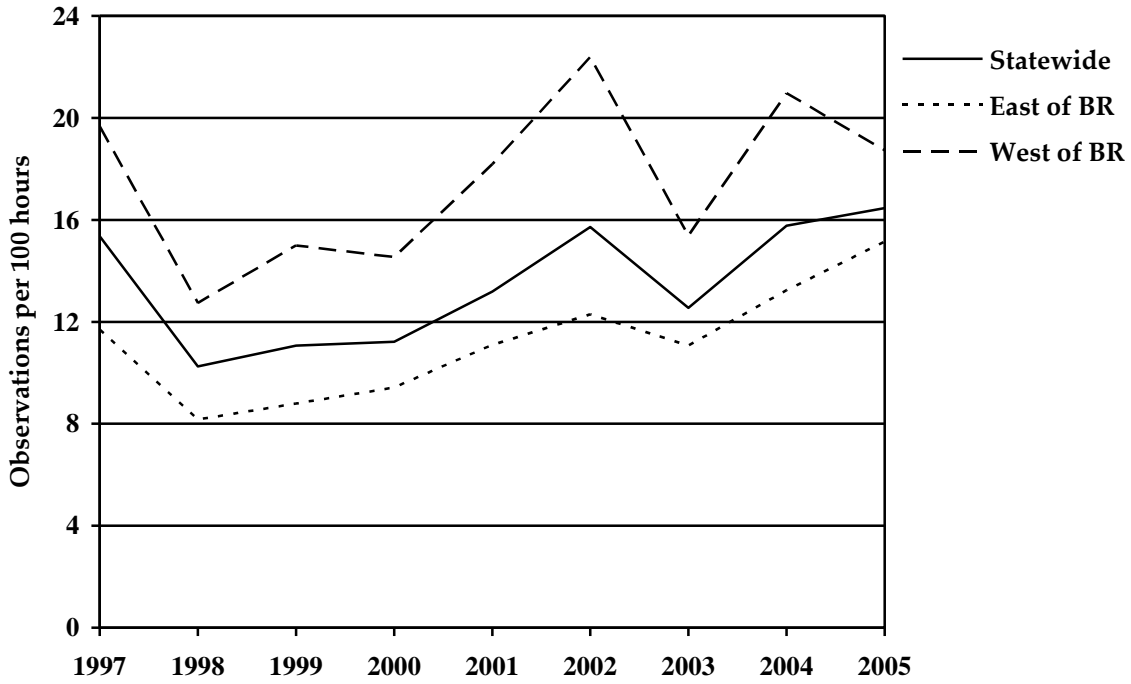


Figure 6. Fawns observed (per 100 hours of hunting) by cooperating early archery hunters from 1997-2005 east and west of the Blue Ridge Mountains and statewide in Virginia.

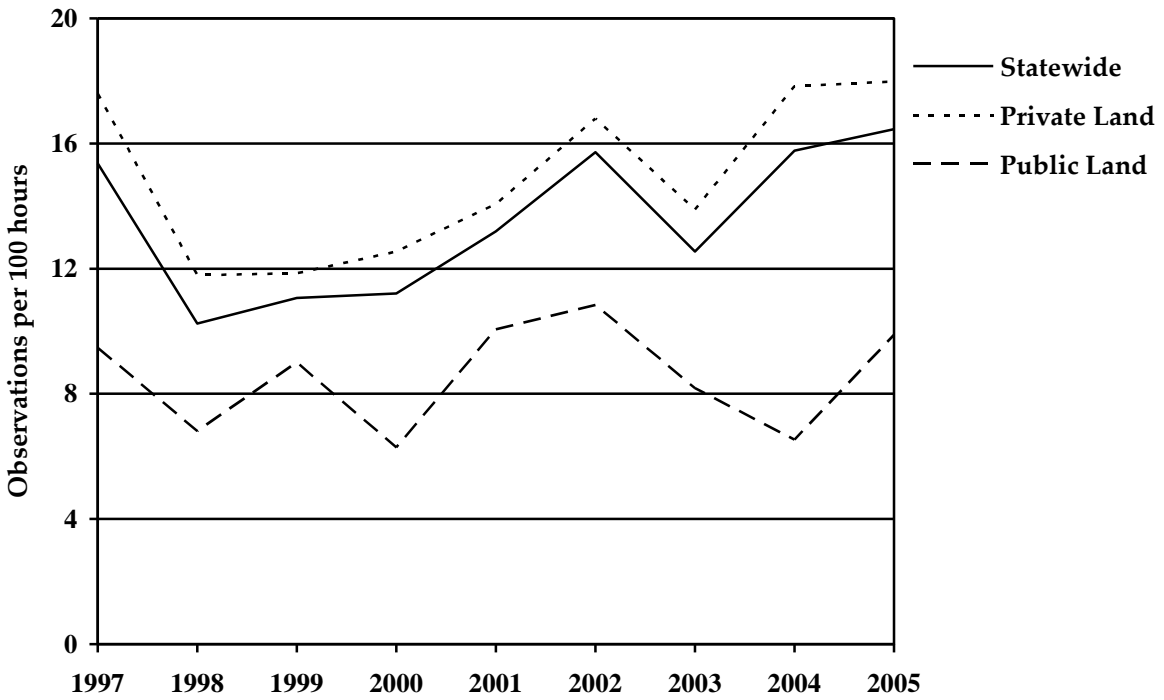


Figure 7. Fawns observed (per 100 hours of hunting) by cooperating early archery hunters from 1997-2005 by land ownership and statewide in Virginia.

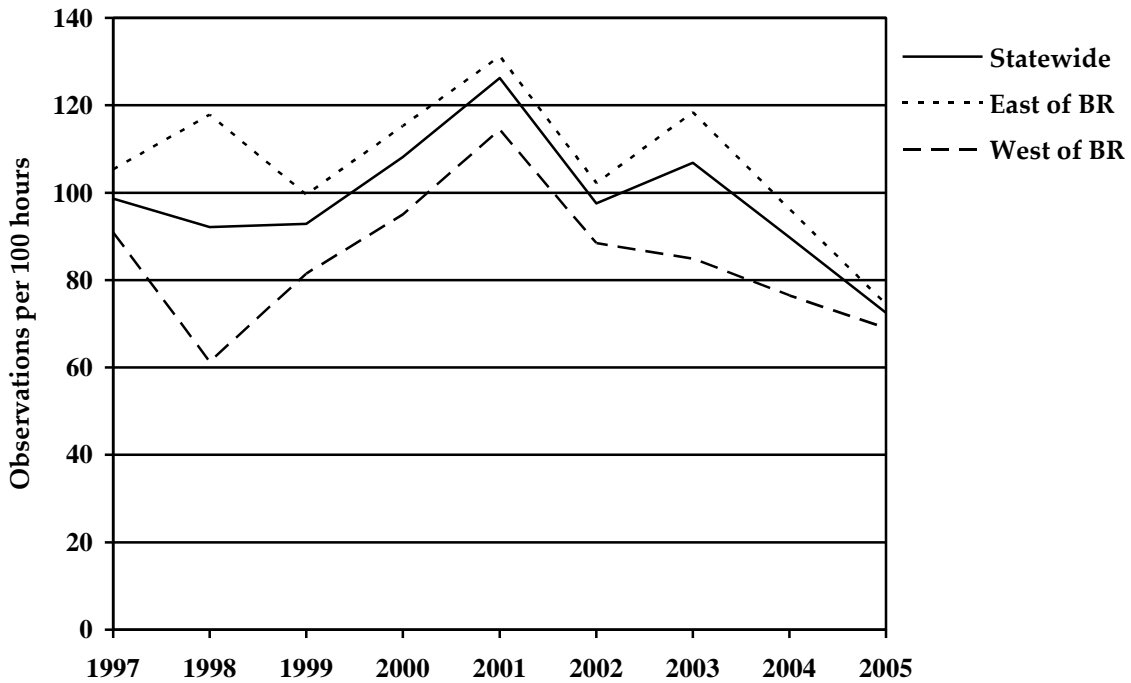


Figure 8. Gray squirrels observed (per 100 hours of hunting) by cooperating early archery hunters from 1997-2005 east and west of the Blue Ridge Mountains and statewide in Virginia.

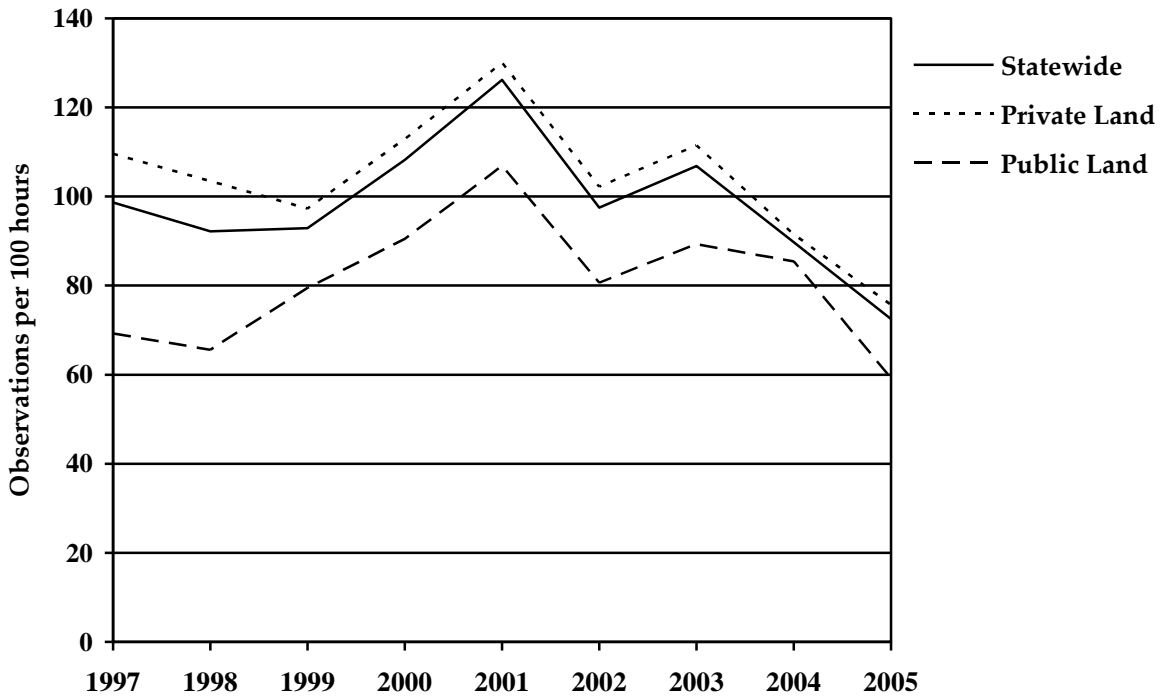


Figure 9. Gray squirrels observed (per 100 hours of hunting) by cooperating early archery hunters from 1997-2005 by land ownership and statewide in Virginia.

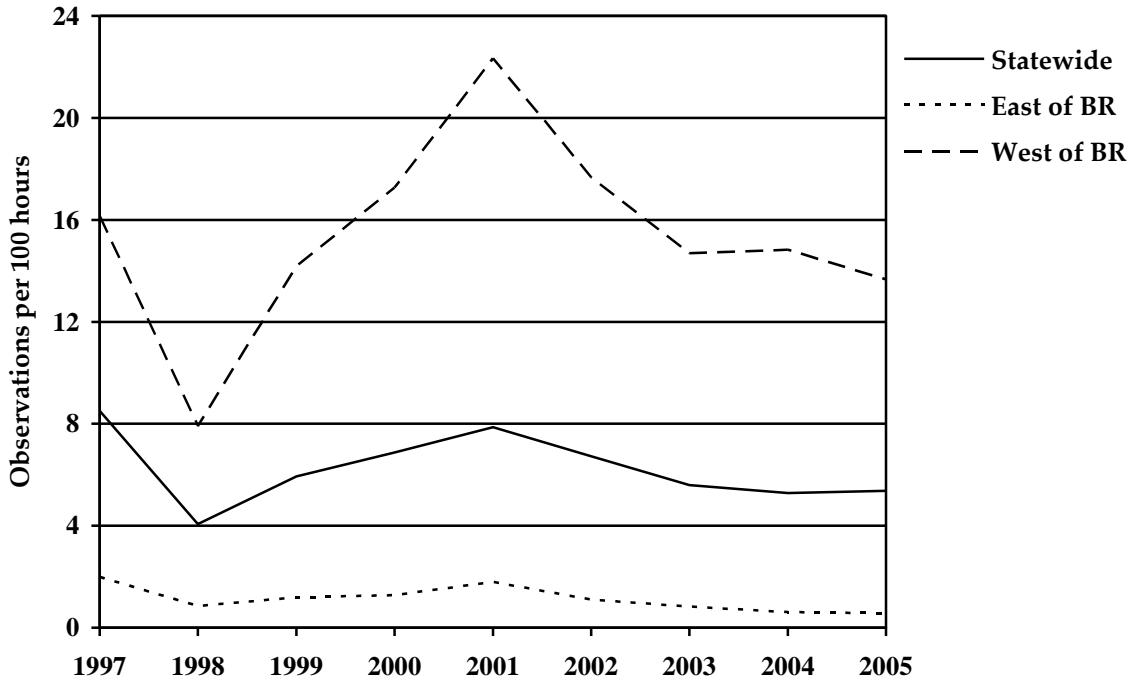


Figure 10. Fox squirrels observed (per 100 hours of hunting) by cooperating early archery hunters from 1997-2005 east and west of the Blue Ridge Mountains and statewide in Virginia.

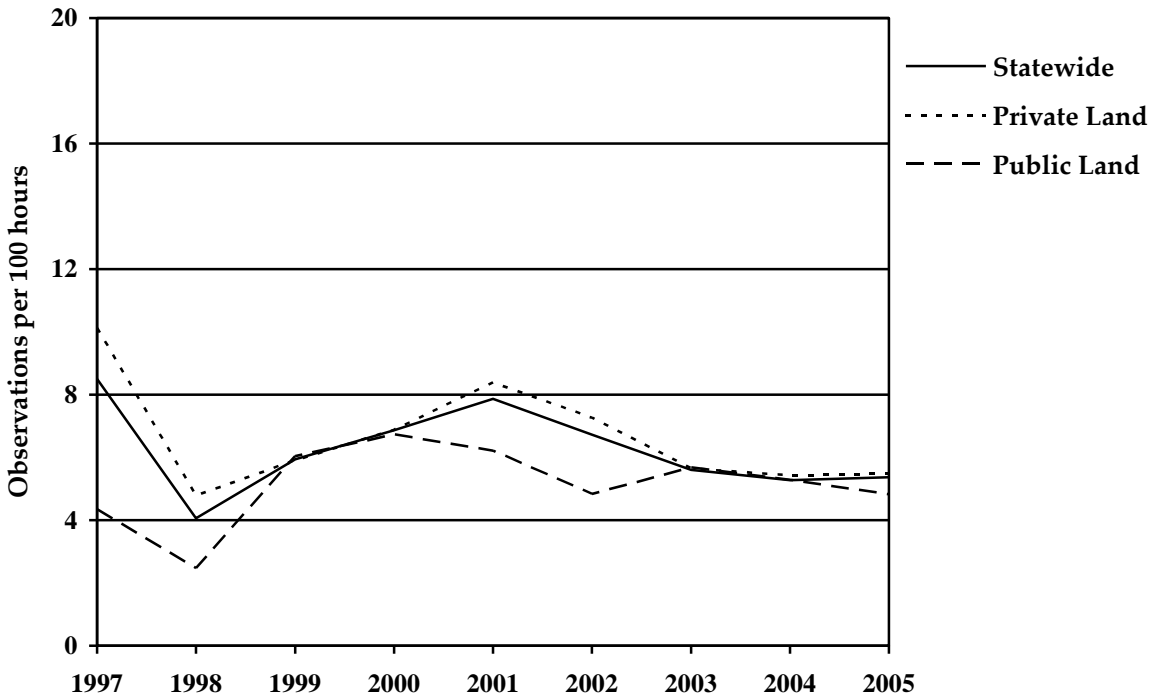


Figure 11. Fox squirrels observed (per 100 hours of hunting) by cooperating early archery hunters from 1997-2005 by land ownership and statewide in Virginia.

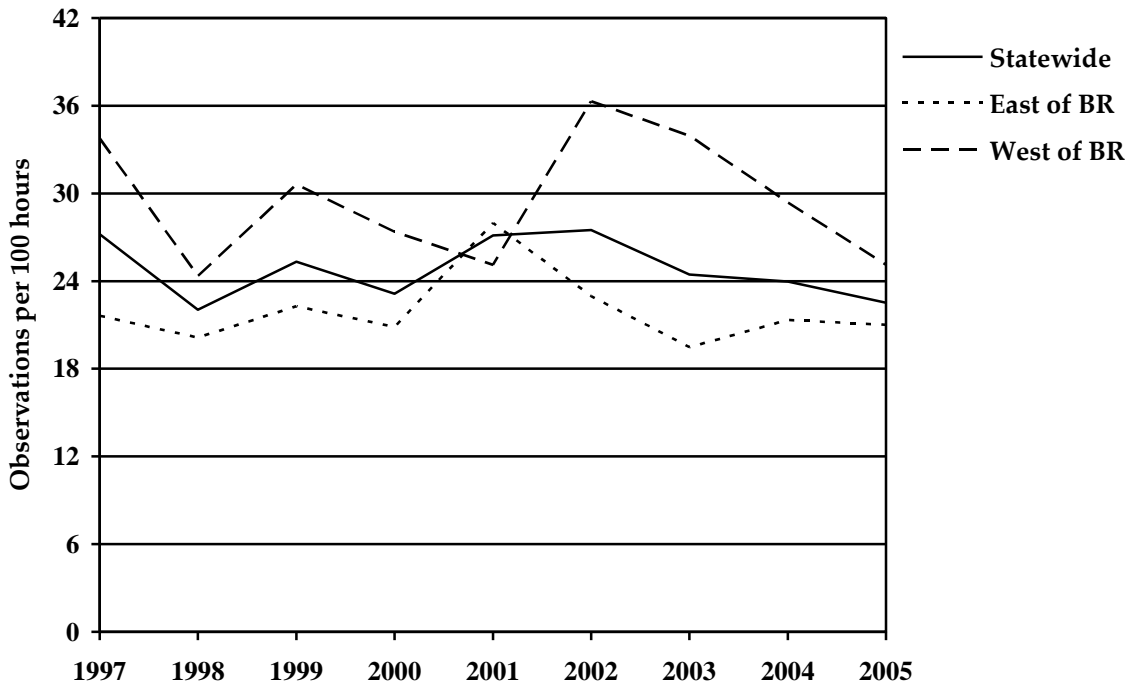


Figure 12. Wild turkeys observed (per 100 hours of hunting) by cooperating early archery hunters from 1997-2005 east and west of the Blue Ridge Mountains and statewide in Virginia.

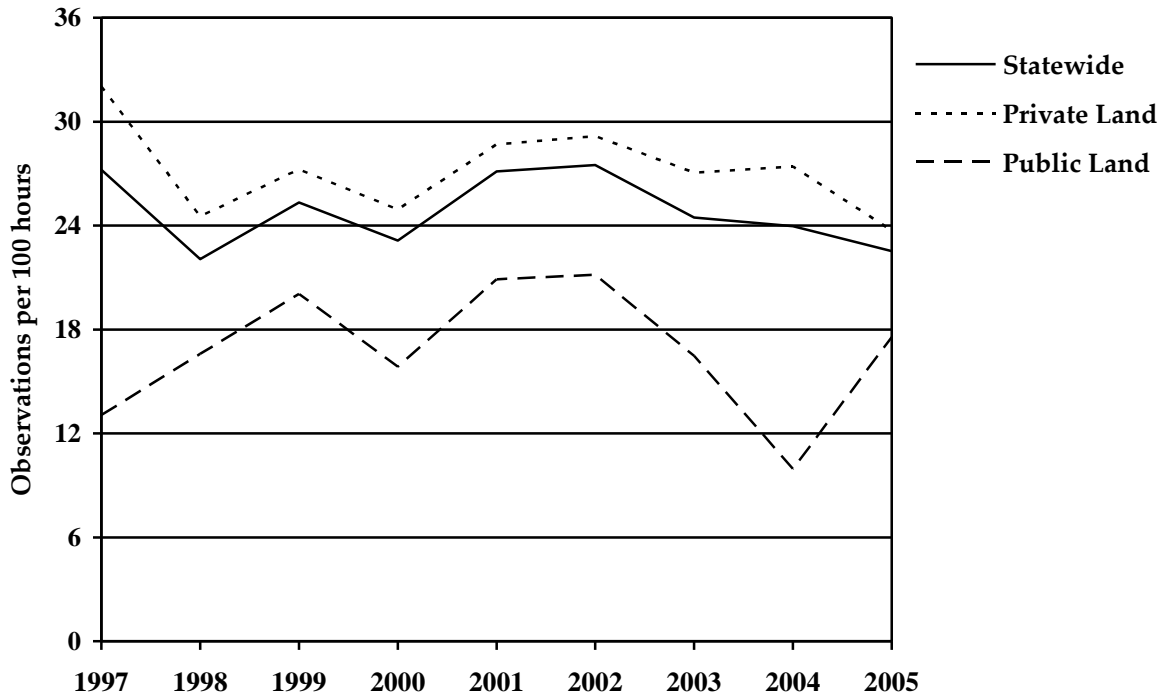


Figure 13. Wild turkeys observed (per 100 hours of hunting) by cooperating early archery hunters from 1997-2005 by land ownership and statewide in Virginia.

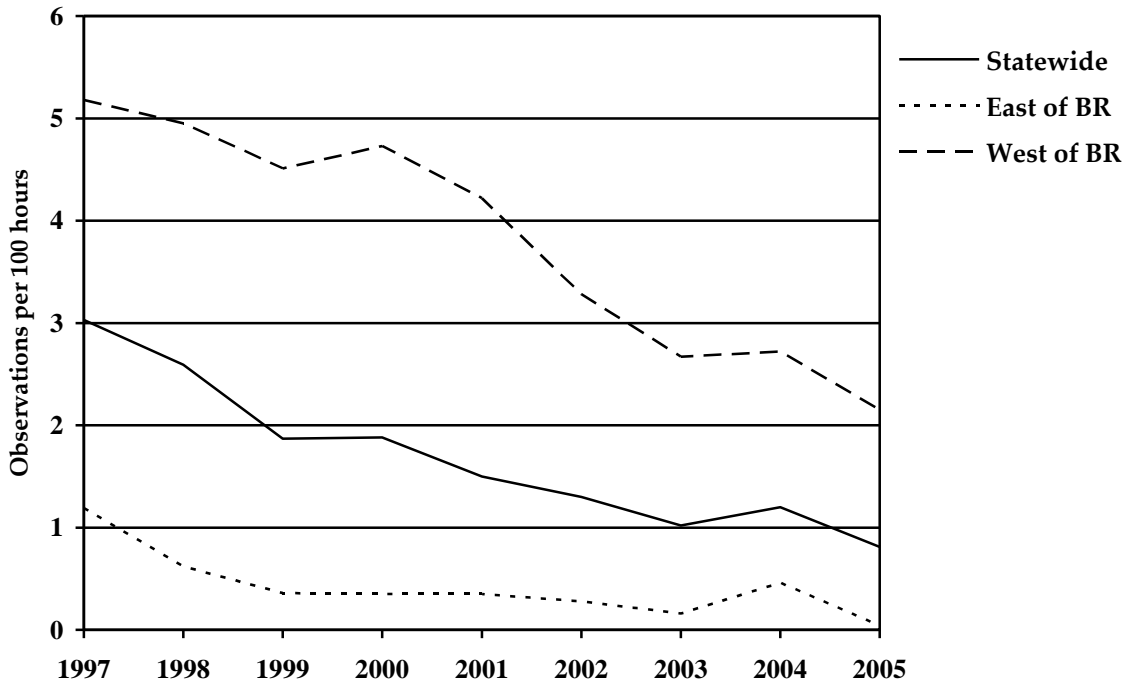


Figure 14. Ruffed grouse observed (per 100 hours of hunting) by cooperating early archery hunters from 1997-2005 east and west of the Blue Ridge Mountains and statewide in Virginia.

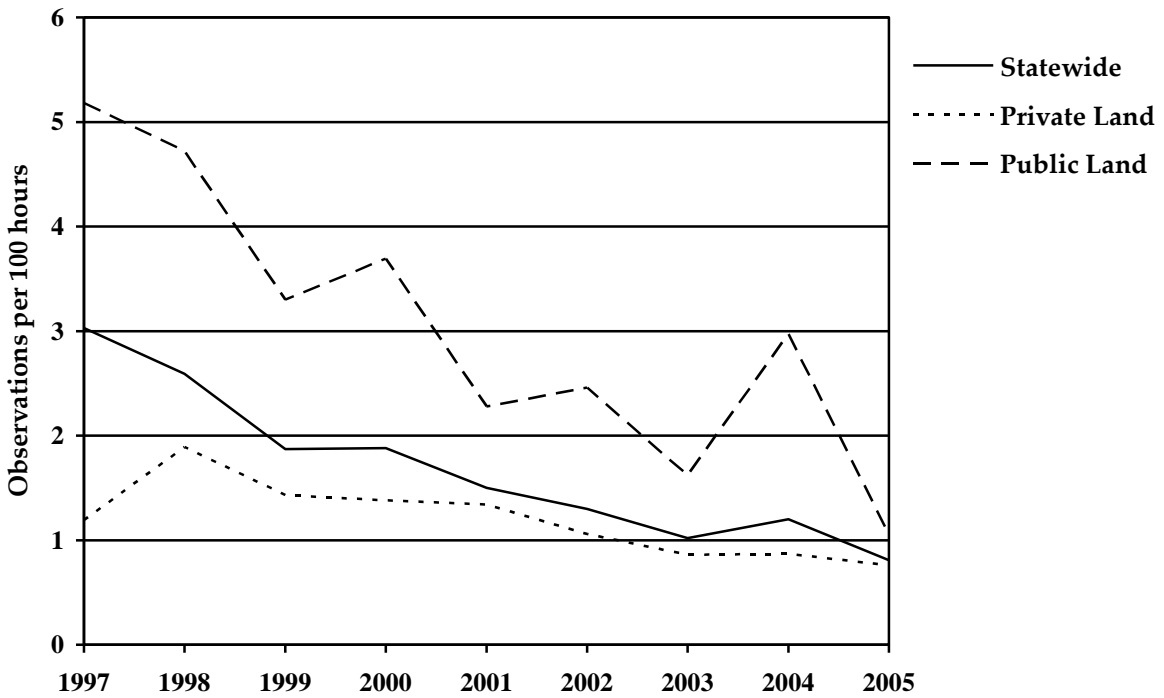


Figure 15. Ruffed grouse observed (per 100 hours of hunting) by cooperating early archery hunters from 1997-2005 by land ownership and statewide in Virginia.

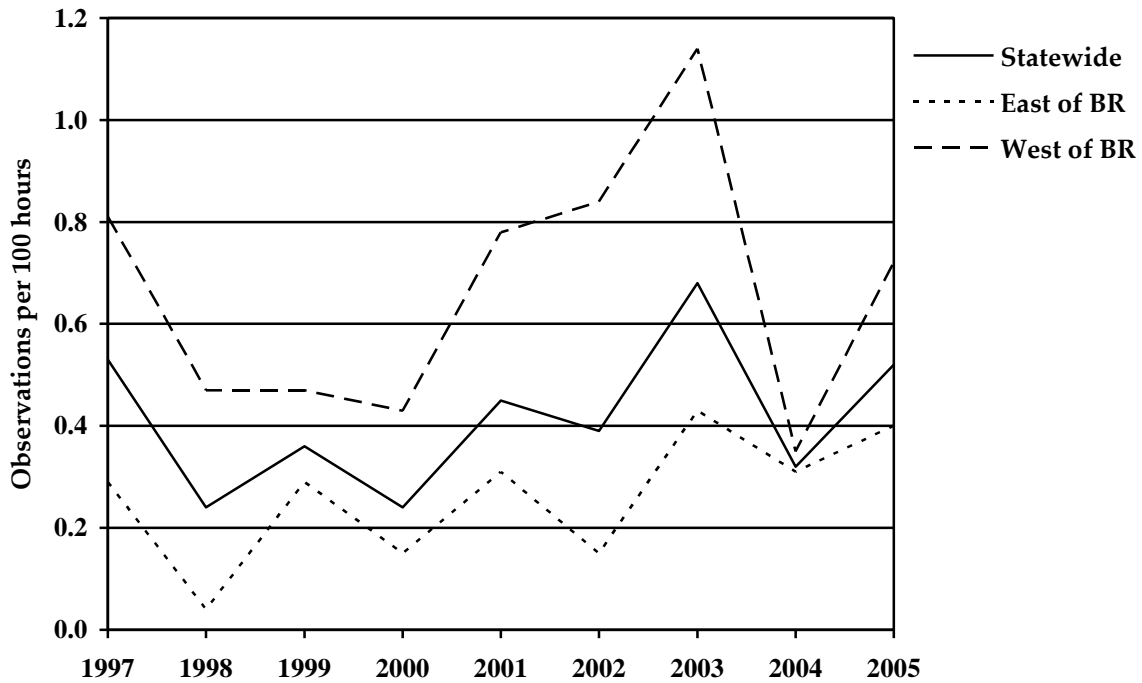


Figure 16. Black bears observed (per 100 hours of hunting) by cooperating early archery hunters from 1997-2005 east and west of the Blue Ridge Mountains and statewide in Virginia.

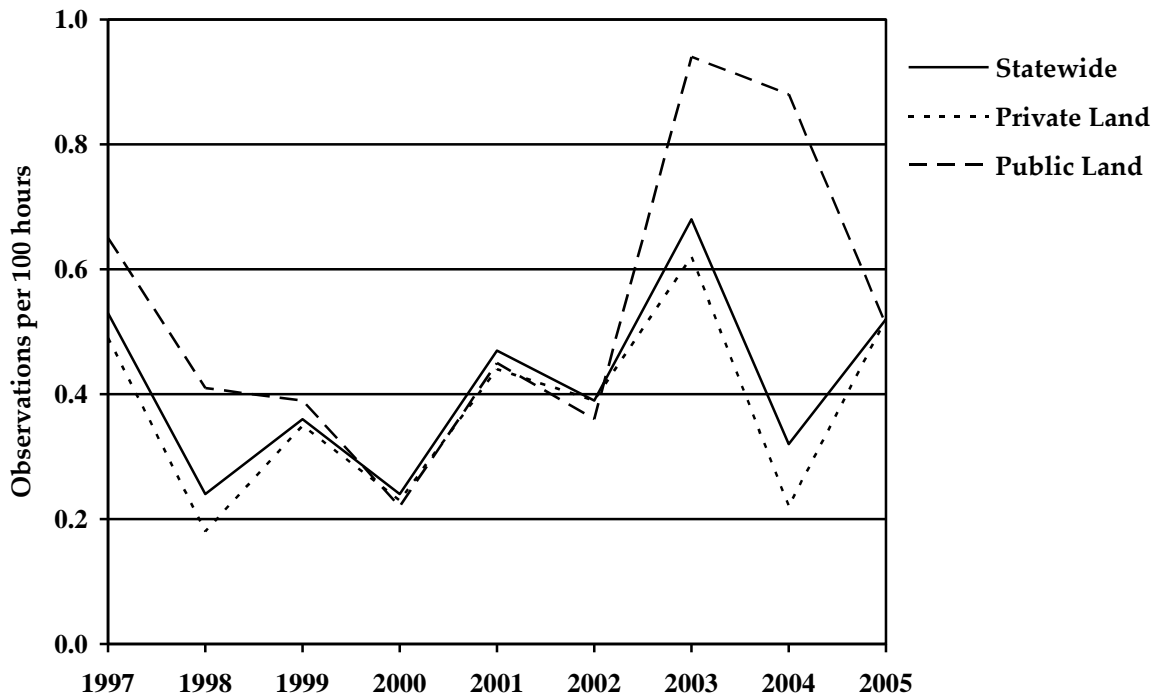


Figure 17. Black bears observed (per 100 hours of hunting) by cooperating early archery hunters from 1997-2005 by land ownership and statewide in Virginia.

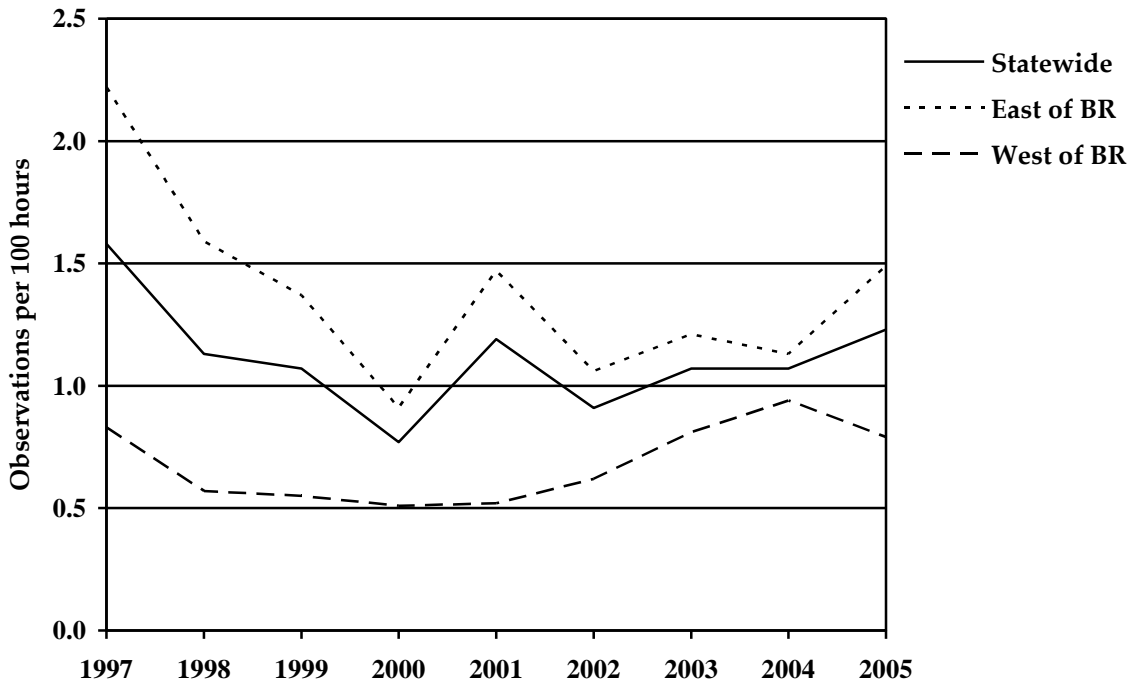


Figure 18. Red foxes observed (per 100 hours of hunting) by cooperating early archery hunters from 1997-2005 east and west of the Blue Ridge Mountains and statewide in Virginia.

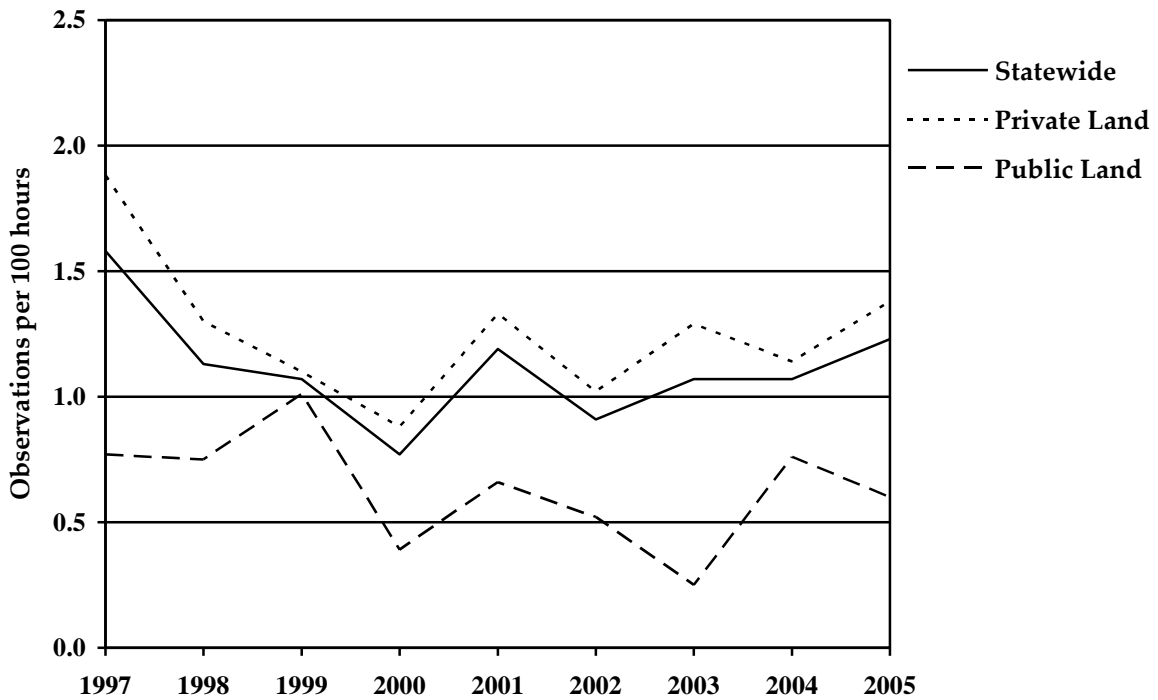


Figure 19. Red foxes observed (per 100 hours of hunting) by cooperating early archery hunters from 1997-2005 by land ownership and statewide in Virginia.

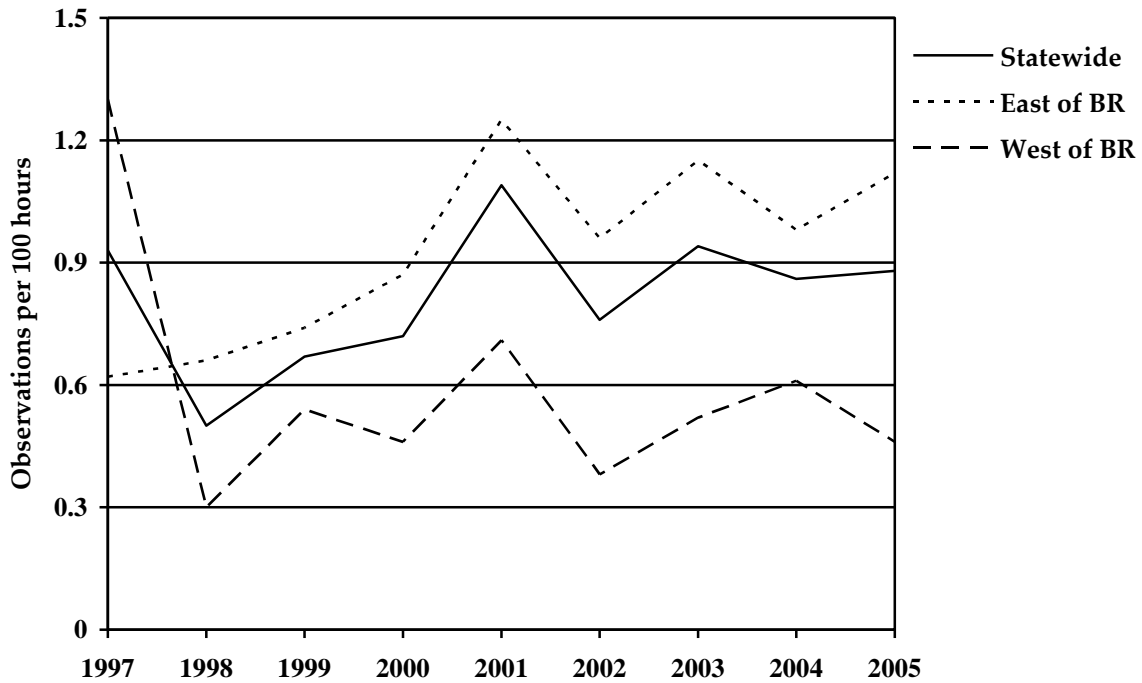


Figure 20. Gray foxes observed (per 100 hours of hunting) by cooperating early archery hunters from 1997-2005 east and west of the Blue Ridge Mountains and statewide in Virginia.

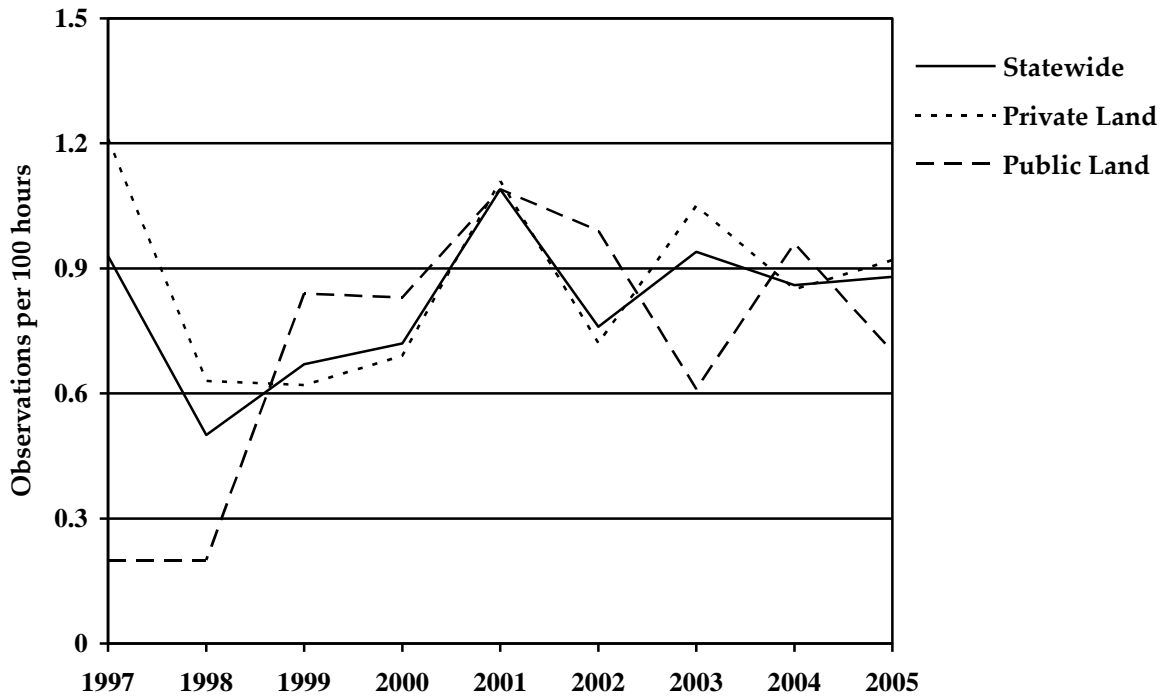


Figure 21. Gray foxes observed (per 100 hours of hunting) by cooperating early archery hunters from 1997-2005 by land ownership and statewide in Virginia.

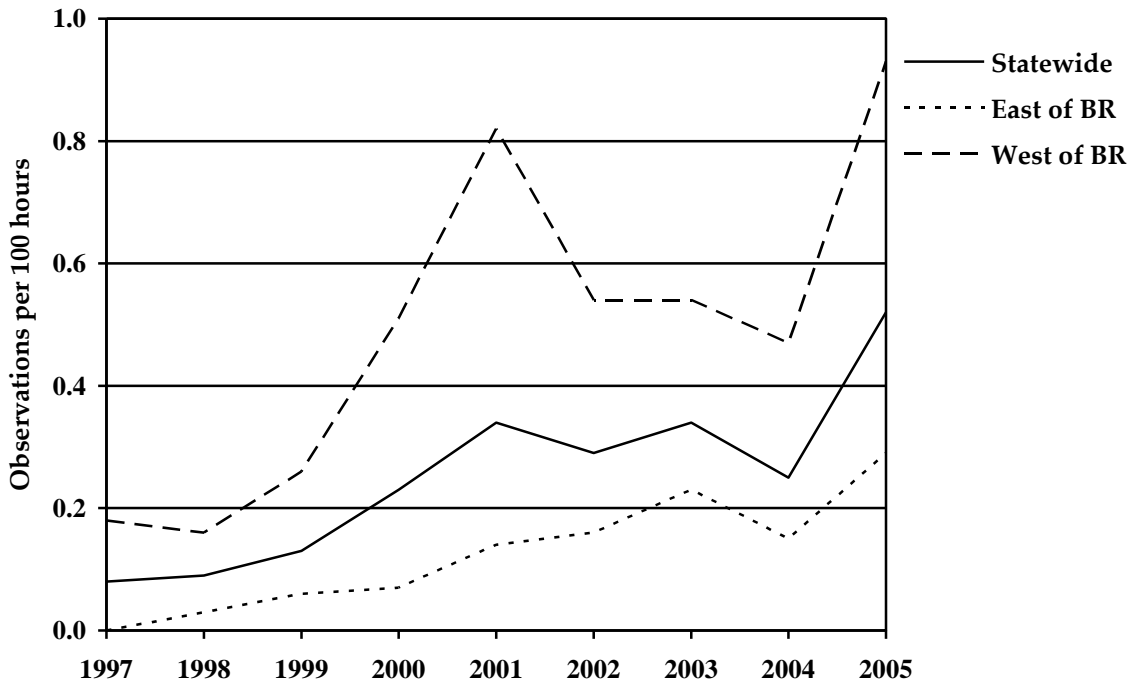


Figure 22. Coyotes observed (per 100 hours of hunting) by cooperating early archery hunters from 1997-2005 east and west of the Blue Ridge Mountains and statewide in Virginia.

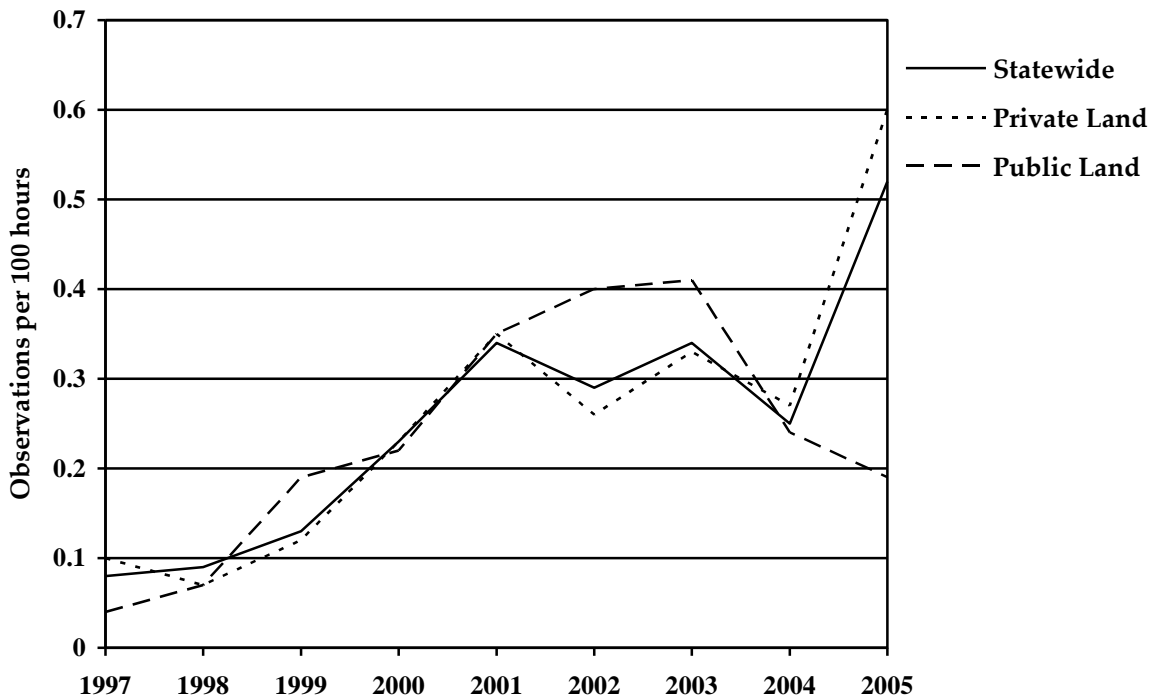


Figure 23. Coyotes observed (per 100 hours of hunting) by cooperating early archery hunters from 1997-2005 by land ownership and statewide in Virginia.

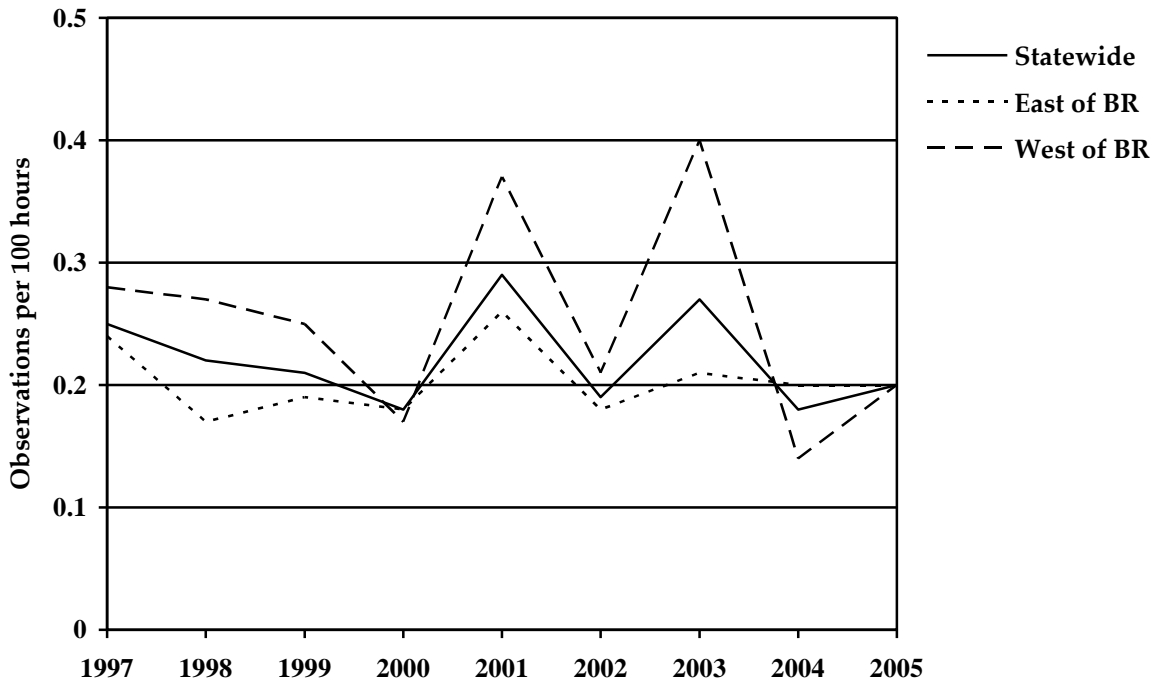


Figure 24. Bobcats observed (per 100 hours of hunting) by cooperating early archery hunters from 1997-2005 east and west of the Blue Ridge Mountains and statewide in Virginia.

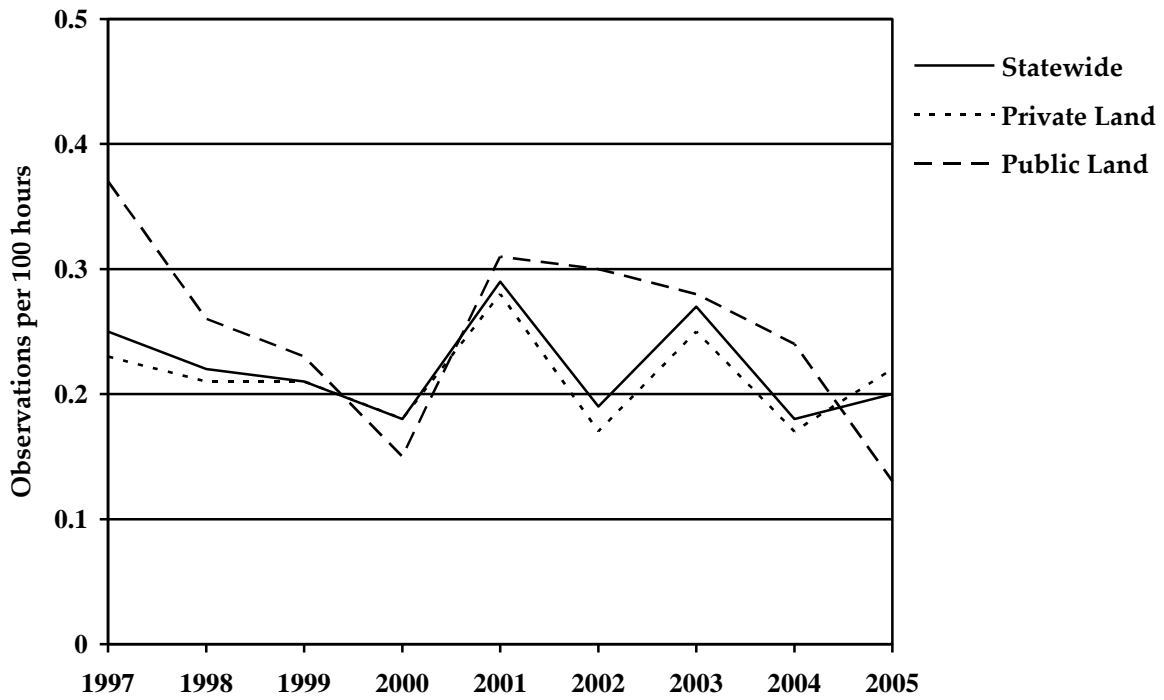


Figure 25. Bobcats observed (per 100 hours of hunting) by cooperating early archery hunters from 1997-2005 by land ownership and statewide in Virginia.

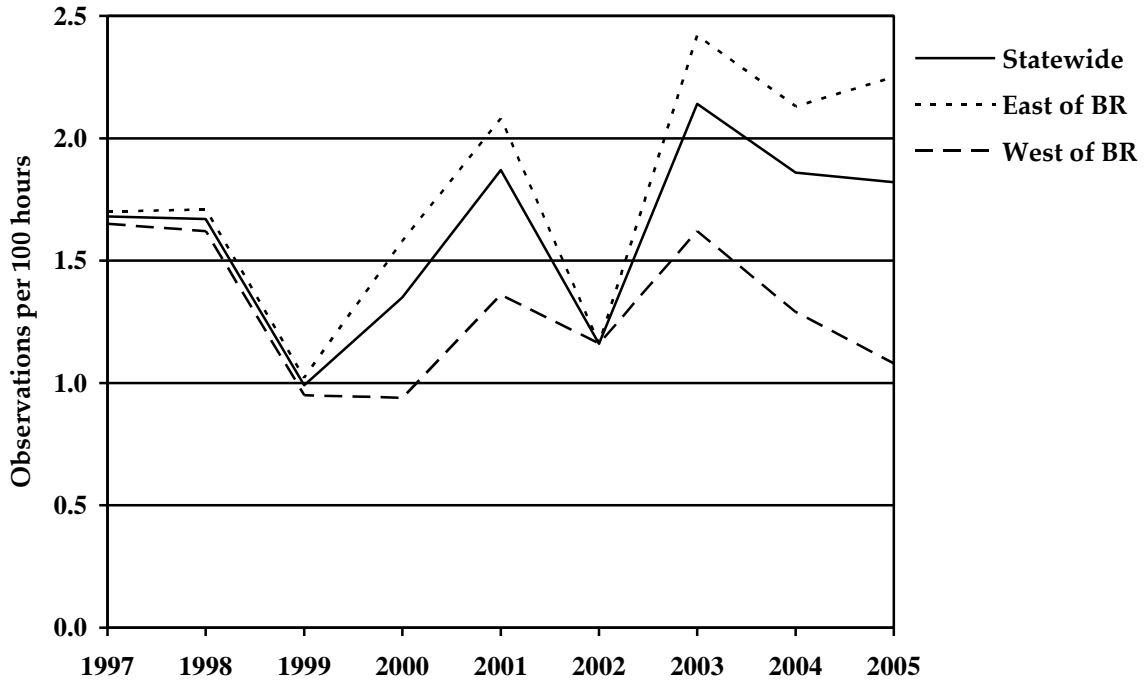


Figure 26. Raccoons observed (per 100 hours of hunting) by cooperating early archery hunters from 1997-2005 east and west of the Blue Ridge Mountains and statewide in Virginia.

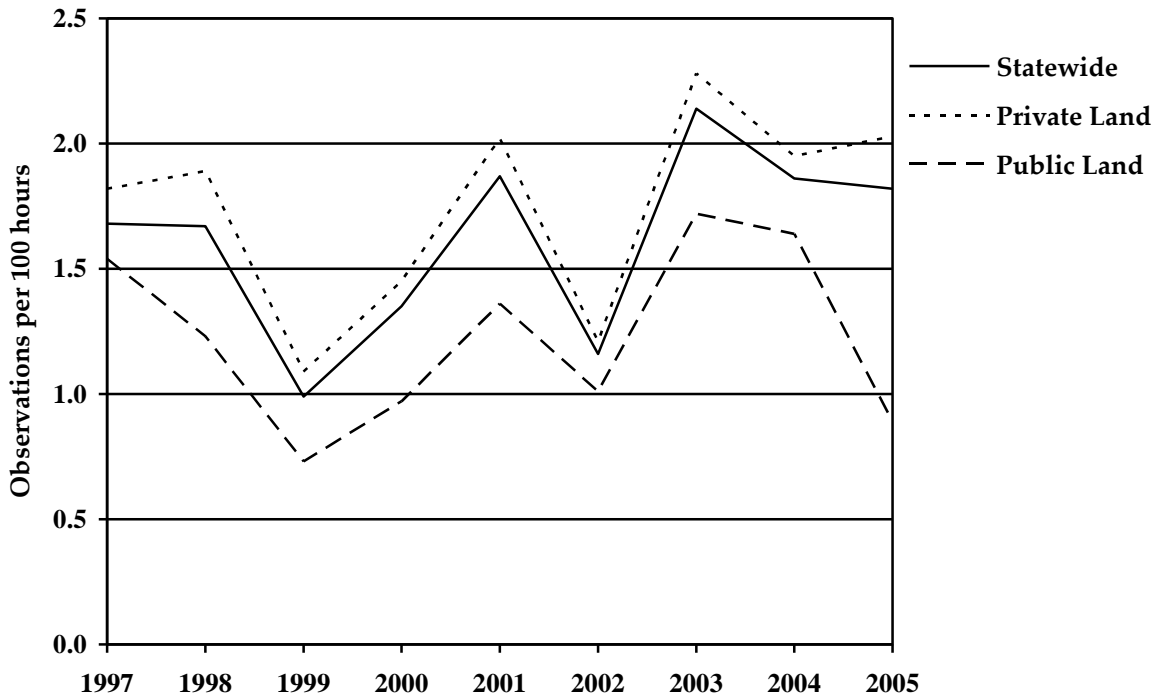


Figure 27. Raccoons observed (per 100 hours of hunting) by cooperating early archery hunters from 1997-2005 by land ownership and statewide in Virginia.

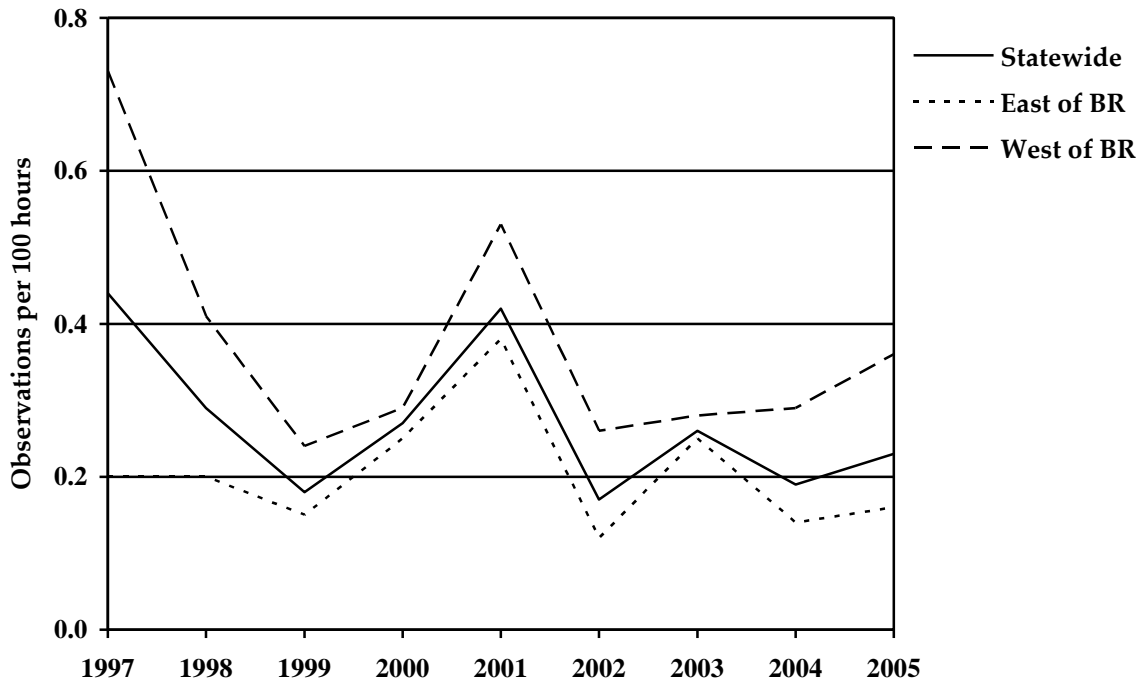


Figure 28. Opossums observed (per 100 hours of hunting) by cooperating early archery hunters from 1997-2005 east and west of the Blue Ridge Mountains and statewide in Virginia.

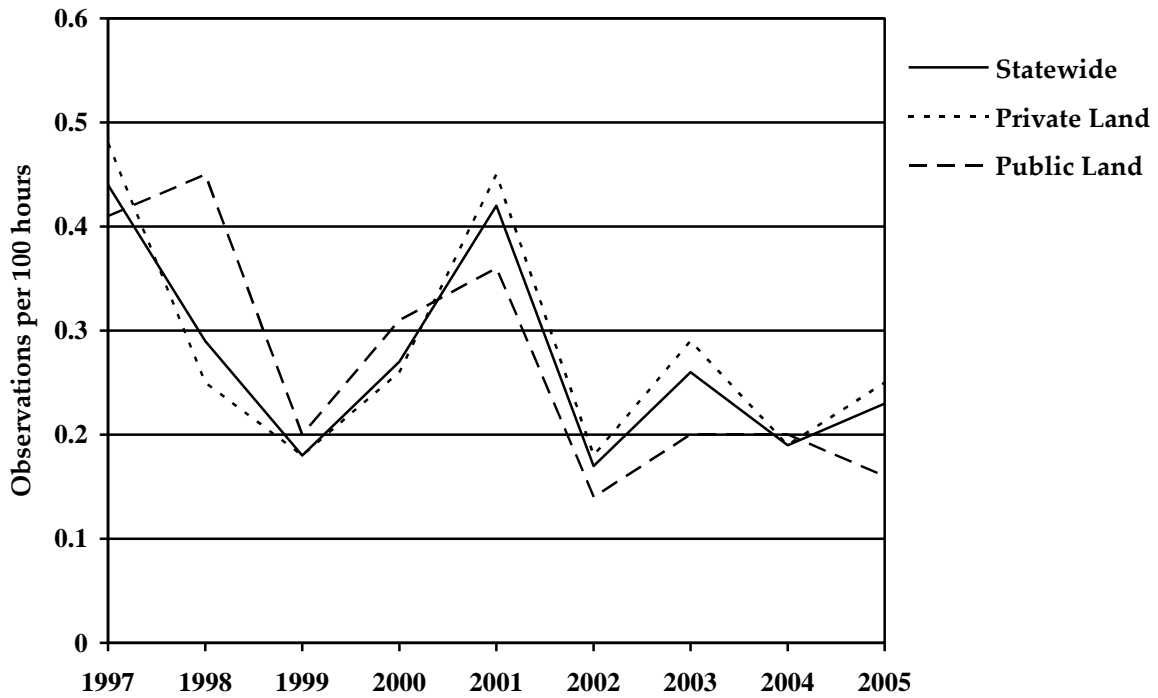


Figure 29. Opossums observed (per 100 hours of hunting) by cooperating early archery hunters from 1997-2005 by land ownership and statewide in Virginia.

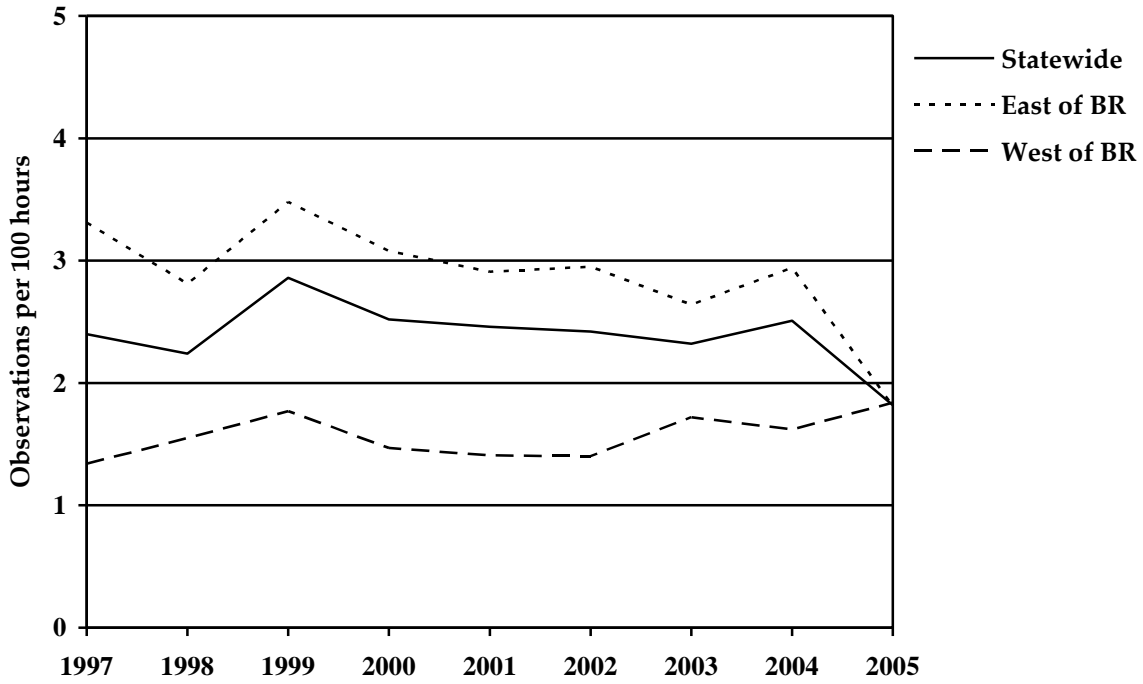


Figure 30. Dogs observed (per 100 hours of hunting) by cooperating early archery hunters from 1997-2005 east and west of the Blue Ridge Mountains and statewide in Virginia.

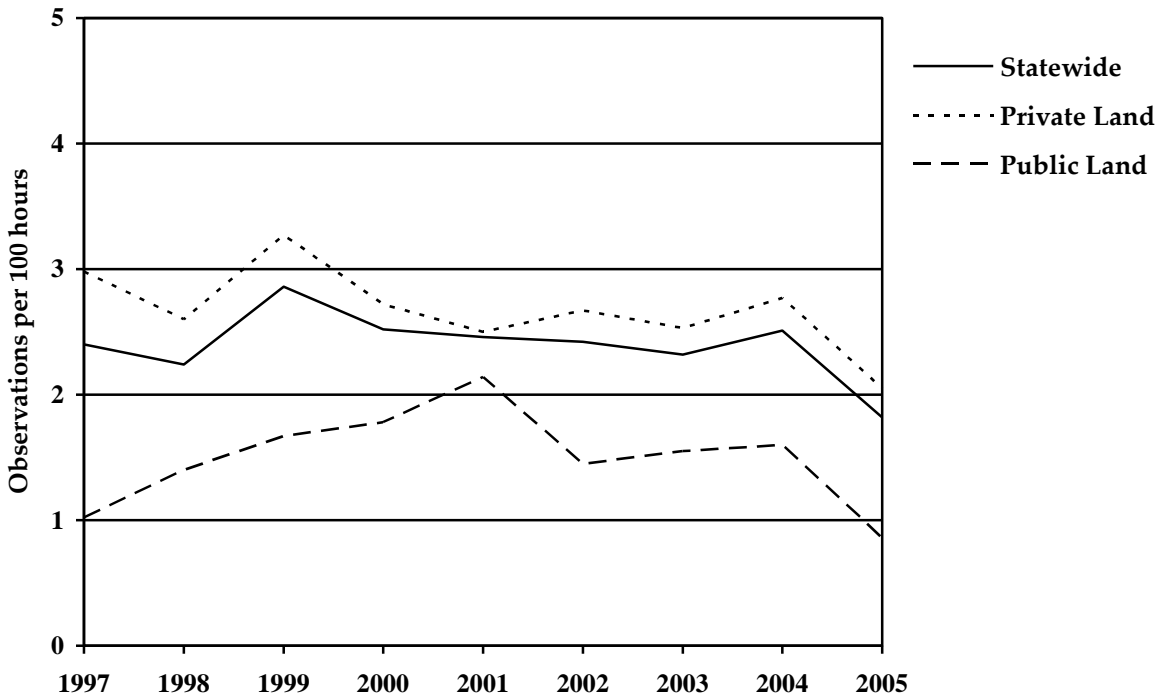


Figure 31. Dogs observed (per 100 hours of hunting) by cooperating early archery hunters from 1997-2005 by land ownership and statewide in Virginia.

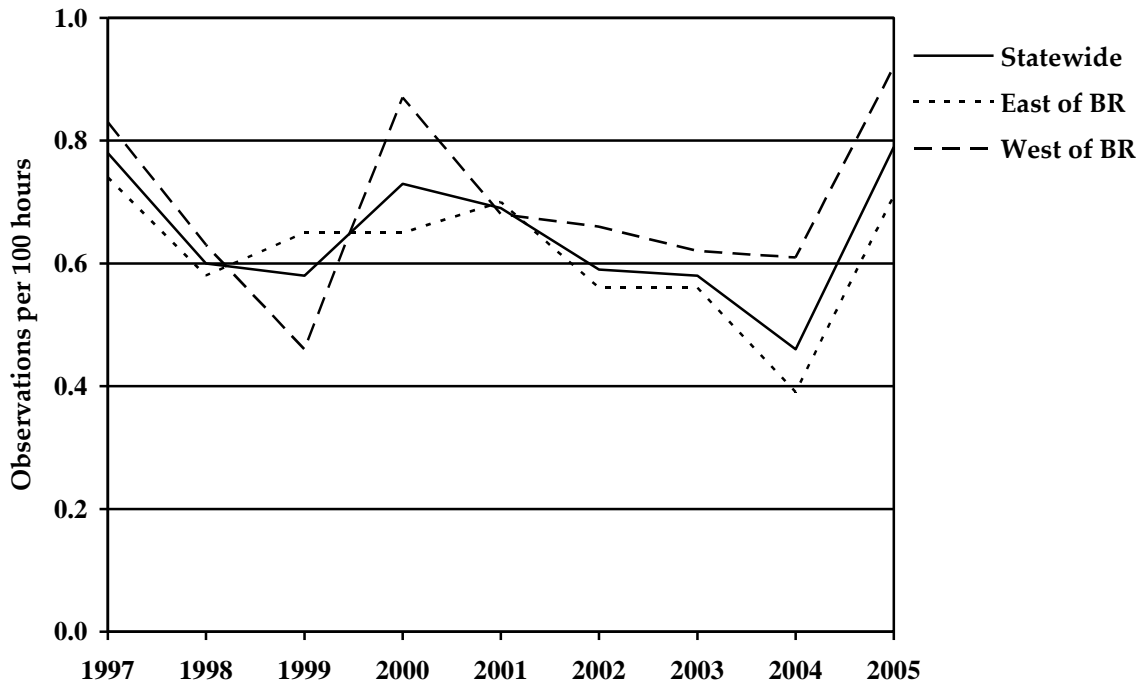


Figure 32. House cats observed (per 100 hours of hunting) by cooperating early archery hunters from 1997-2005 east and west of the Blue Ridge Mountains and statewide in Virginia.

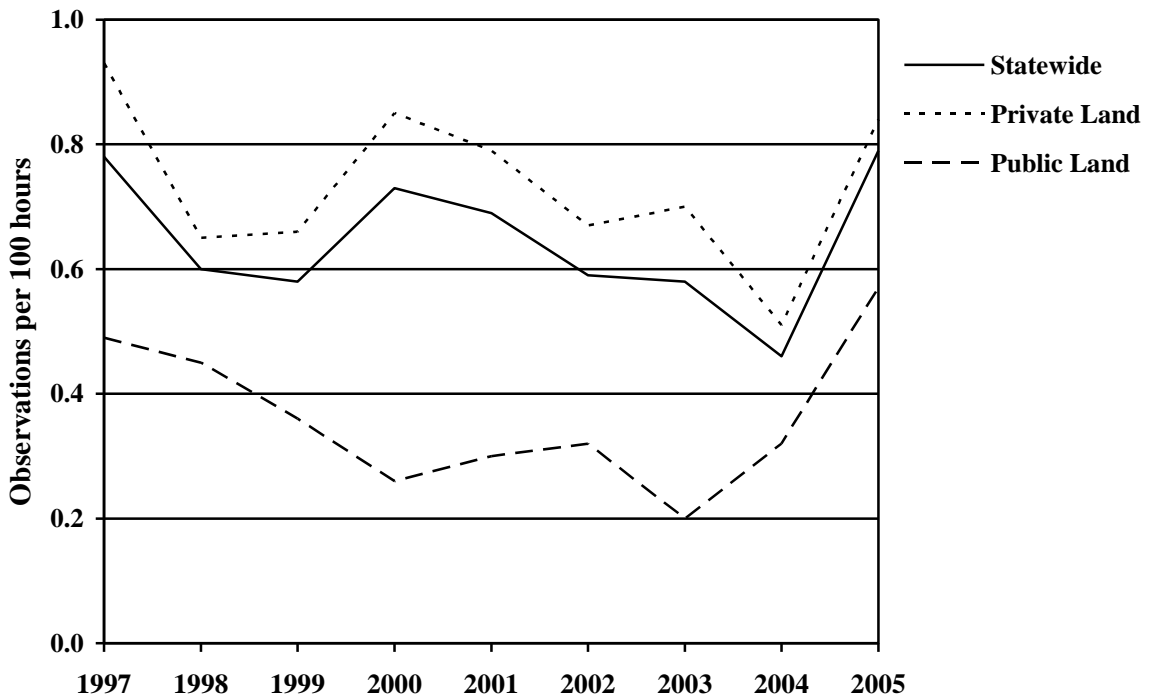


Figure 33. House cats observed (per 100 hours of hunting) by cooperating early archery hunters from 1997-2005 by land ownership and statewide in Virginia.

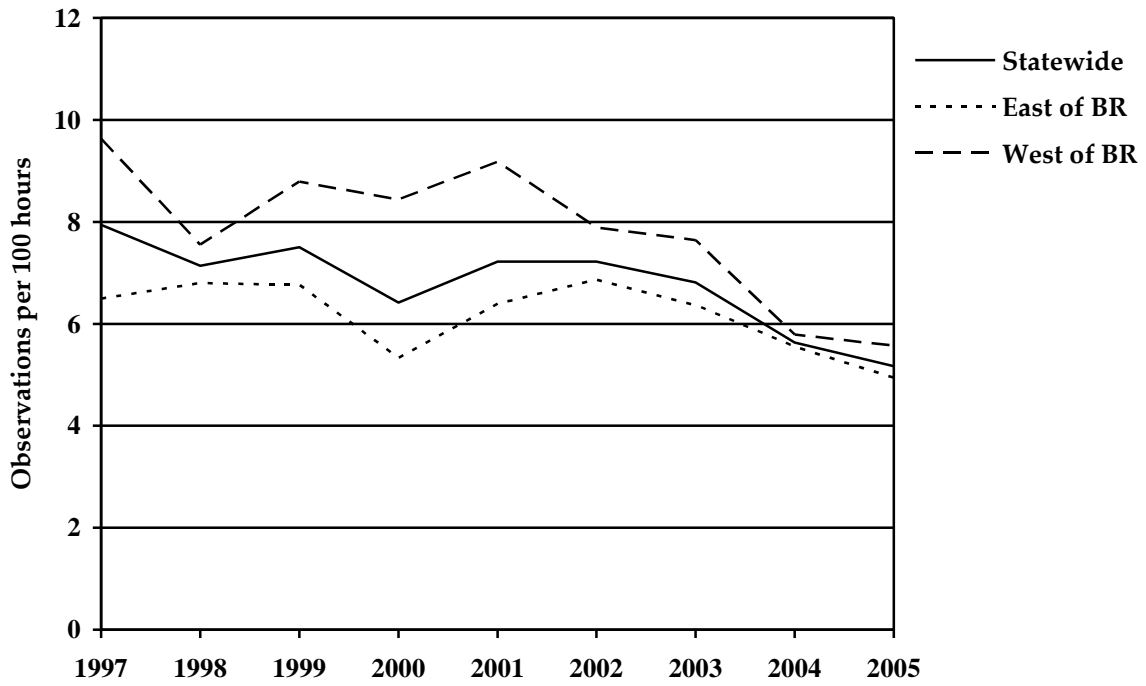


Figure 34. Hunters observed (per 100 hours of hunting) by cooperating early archery hunters from 1997-2005 east and west of the Blue Ridge Mountains and statewide in Virginia.

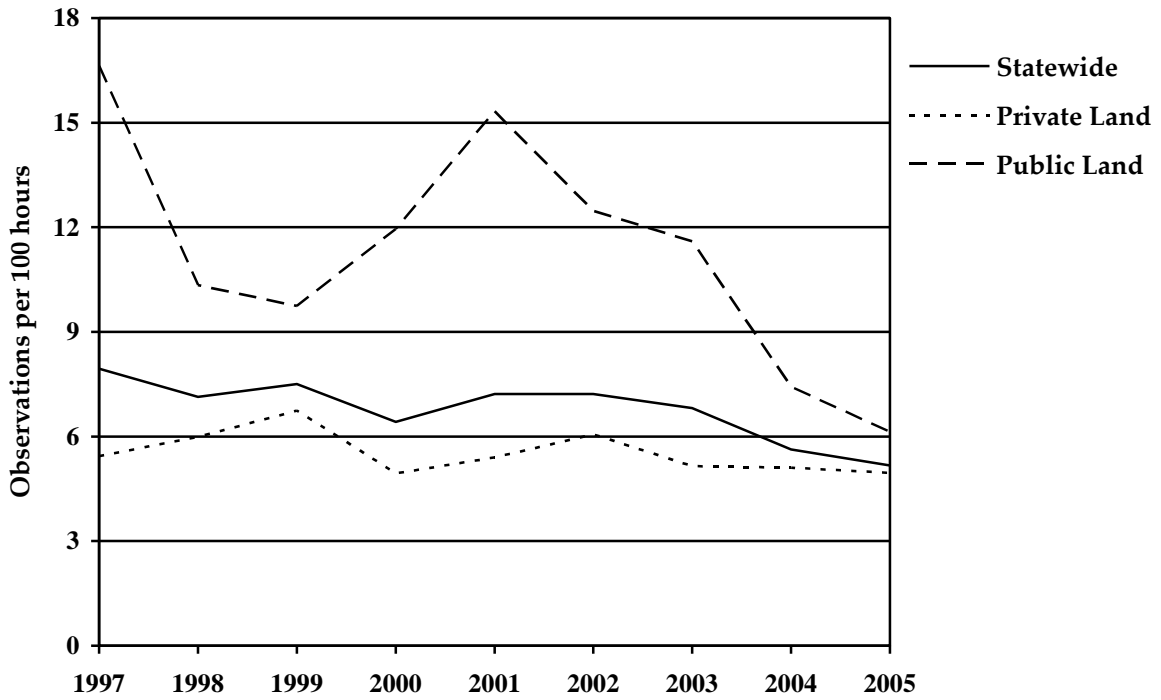


Figure 35. Hunters observed (per 100 hours of hunting) by cooperating early archery hunters from 1997-2005 by land ownership and statewide in Virginia.

2005 Bowhunter Observation Record

Virginia Department of Game and Inland Fisheries

Name: _____

Address: _____

City and Zip Code: _____

Please see instructions on back of form.

*** Mast Crop and Weather Codes:**

Mast Crop: 1) none 2) light 3) moderate 4) heavy

Precipitation: 1) none 2) drizzle 3) moderate 4) heavy

Wind: 1) none 2) light 3) breezy 4) strong

Temperature: 1) <40° F 2) 40-70° F 3) >70° F

Date	Number of Hours Hunted	County	Public Owned Land? (Yes or No)	Deer (antlered)	Deer (does)	Deer (fawns)	Deer (unknown)	Gray Squirrel	Fox Squirrel	Turkey (bearded)	Turkey (no beard)	Turkey (unknown)	Grouse	Bear (adult)	Bear (cub)	Red Fox	Gray Fox	Coyote	Bobcat	Raccoon	Opossum	Striped Skunk	Otter	Mink	Dog	House Cat	Hunter	Other Animals & Number Seen	Mast*	Precipitation*	Wind*	Temperature*	
Oct 1	4 ½	Example	Yes		1	2													1									Fisher: 1	3	2	1	2	

Appendix 1. Survey instrument for 2005 Virginia Bowhunter Survey.

INSTRUCTIONS

1. If you wish to participate in next years survey, and do not wish to maintain your confidentiality, please fill in your name and address at the top of the form and in the return address box below.
2. Enter *number of hours* for each *date* you hunted **between Oct. 1 and Nov. 18** (early season) **only**.
3. Write in the *county* where you hunted. If you hunted in more than one county on one day, record different counties on different lines of the form.
4. Report whether or not you are hunting on *publicly owned land* (state or federal).
5. Enter the *number* of animals and other hunters you observed while hunting. Begin observations upon leaving your vehicle and end observations when you return to your vehicle.
6. If you saw a species *not listed* at the top of the chart, enter the *name* and *number* of animals in the "Other Animals" column near the right side of the form.
7. On the last four columns of the chart, record the *mast conditions* and *average weather* conditions for the time period you hunted. Use the *numbers (codes)* given at the top right corner of the form.
8. *Fold* this form along the lines below so that our address shows, and *tape* it together.
9. Please *mail* this form to us by **January 1, 2006**. *No postage is needed*.

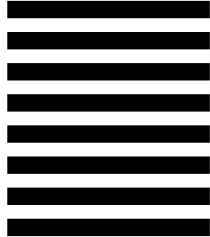


NO POSTAGE
NECESSARY
IF MAILED
IN THE
UNITED STATES

BUSINESS REPLY MAIL
FIRST CLASS PERMIT NO. 3 VERONA, VA

POSTAGE WILL BE PAID BY ADDRESSEE

**VIRGINIA BOWHUNTER SURVEY
VA DEPT OF GAME AND INLAND FISHERIES
PO BOX 996
VERONA VA 24482-9901**



Name: _____
Address: _____
City/Town: _____

If you wish to continue to participate in the Virginia Bowhunter Survey, and do not wish to maintain confidentiality, please enter your name and address in the return address box. Thank you.

RETURN ADDRESS (OPTIONAL).

DO YOU KNOW OF OTHER HUNTERS WHO WOULD LIKE TO PARTICIPATE IN THE BOWHUNTER SURVEY? IF SO, PLEASE ENTER THEIR NAMES AND ADDRESSES BELOW:

Name: _____
Address: _____
City/Town: _____

Name: _____
Address: _____
City/Town: _____

THANK YOU FOR PARTICIPATING!!



Appendix 3. Virginia counties hunted, hunts per county, and percentage of total state hunts per county by cooperating archery hunters 1 October to 18 November 2005 in Virginia.

County	No. Hunts	% of Hunts	County	No. Hunts	% of Hunts
Accomack	107	3.03	King William	83	2.34
Albemarle	53	1.50	Lancaster	24	0.68
Alleghany	10	0.28	Lee	41	1.16
Amelia	6	0.17	Loudoun	37	1.04
Amherst	90	2.54	Louisa	25	0.71
Appomattox	24	0.68	Lunenburg	0	0.00
Augusta	35	0.99	Madison	41	1.16
Bath	27	0.76	Mathews	6	0.17
Bedford	51	1.44	Mecklenburg	32	0.90
Bland	62	1.75	Middlesex	21	0.59
Botetourt	32	0.90	Montgomery	88	2.48
Brunswick	23	0.65	Nelson	41	1.16
Buchanan	21	0.59	New Kent	45	1.27
Buckingham	9	0.25	Northampton	15	0.42
Campbell	33	0.93	Northumberland	38	1.07
Caroline	53	1.50	Nottoway	60	1.69
Carroll	16	0.45	Orange	58	1.64
Charles City	30	0.85	Page	28	0.79
Charlotte	17	0.48	Patrick	42	1.19
Chesapeake	3	0.08	Pittsylvania	53	1.50
Chesterfield	69	1.95	Powhatan	16	0.45
Clarke	17	0.48	Prince Edward	14	0.47
Craig	3	0.08	Prince George	54	1.52
Culpeper	37	1.04	Prince William	12	0.34
Cumberland	22	0.62	Pulaski	15	0.42
Dickenson	58	1.64	Rappahannock	37	1.04
Dinwiddie	12	0.34	Richmond	18	0.51
Essex	77	2.17	Roanoke	38	1.07
Fairfax	95	2.68	Rockbridge	20	0.56
Fauquier	56	1.58	Rockingham	104	2.93
Floyd	45	1.27	Russell	20	0.56
Fluvanna	34	0.96	Scott	14	0.40
Franklin	28	0.79	Shenandoah	205	5.78
Frederick	22	0.62	Smyth	1	0.03
Giles	41	1.16	Southampton	113	3.19
Gloucester	35	0.99	Spotsylvania	16	0.45
Goochland	21	0.59	Stafford	26	0.73
Grayson	7	0.20	Suffolk	9	0.25
Greene	4	0.11	Surry	88	2.48
Greensville	44	1.24	Sussex	37	1.04
Halifax	32	0.90	Tazewell	39	1.10
Hanover	21	0.59	Virginia Beach	4	0.11
Henrico	44	1.24	Warren	3	0.08
Henry	73	2.06	N. News / Hampton	2	0.06
Highland	9	0.25	Washington	44	1.24
Isle of Wight	60	1.69	Westmoreland	24	0.68
James City	6	0.17	Wise	14	0.40
King & Queen	21	0.59	Wythe	37	1.04
King George	43	1.21	York	4	0.11