

Table 1. Observations of selected animals (per 100 hours hunting) by cooperating archery hunters from 4 October to 14 November 2008 statewide, east (EBR) and west (WBR) of the Blue Ridge Mountains, and on private and public lands in Virginia.

Animal	Total Seen	State	Animals Seen/100 hrs. $\pm$ SE			
			EBR	WBR	Private Land	Public Land
Deer (antlered)	3,269	16.12 $\pm$ 1.16	16.94 $\pm$ 1.50	14.73 $\pm$ 1.74	17.45 $\pm$ 1.32	9.02 $\pm$ 1.34
Deer (doe)	7,312	36.05 $\pm$ 2.85	32.57 $\pm$ 3.95	41.88 $\pm$ 3.52	39.43 $\pm$ 3.32	18.00 $\pm$ 1.99
Deer (fawn)	3,476	17.14 $\pm$ 1.99	16.31 $\pm$ 2.76	18.53 $\pm$ 2.63	19.40 $\pm$ 2.34	5.04 $\pm$ 0.75
Deer (unknown)	2,418	11.92 $\pm$ 1.27	11.01 $\pm$ 1.80	13.45 $\pm$ 1.57	12.52 $\pm$ 1.46	8.73 $\pm$ 1.73
Gray Squirrel	19,608	96.68 $\pm$ 4.19	103.54 $\pm$ 5.75	85.18 $\pm$ 5.16	101.30 $\pm$ 4.78	71.93 $\pm$ 5.63
Fox Squirrel	1,505	7.42 $\pm$ 1.11	2.39 $\pm$ 1.01	15.84 $\pm$ 2.18	8.02 $\pm$ 1.29	4.19 $\pm$ 0.98
Turkey (bearded)	843	4.16 $\pm$ 0.58	3.36 $\pm$ 0.40	5.49 $\pm$ 1.39	4.35 $\pm$ 0.60	3.10 $\pm$ 0.83
Turkey (no beard)	2,563	12.64 $\pm$ 1.35	12.01 $\pm$ 1.51	13.69 $\pm$ 2.56	14.10 $\pm$ 1.57	4.82 $\pm$ 0.95
Turkey (unknown)	1,551	7.65 $\pm$ 0.87	6.88 $\pm$ 0.82	8.93 $\pm$ 1.68	7.70 $\pm$ 0.89	7.39 $\pm$ 2.15
Turkey (total)	4,957	24.44 $\pm$ 2.03	22.25 $\pm$ 1.94	28.11 $\pm$ 4.19	26.15 $\pm$ 2.27	15.31 $\pm$ 2.55
Grouse	127	0.63 $\pm$ 0.19	0.04 $\pm$ 0.02	1.61 $\pm$ 0.47	0.42 $\pm$ 0.14	1.75 $\pm$ 0.63
Bear (adult)	108	0.53 $\pm$ 0.10	0.20 $\pm$ 0.06	1.08 $\pm$ 0.24	0.46 $\pm$ 0.09	0.91 $\pm$ 0.30
Bear (cub)	28	0.14 $\pm$ 0.03	0.06 $\pm$ 0.02	0.28 $\pm$ 0.08	0.12 $\pm$ 0.03	0.25 $\pm$ 0.11
Bear (total)	136	0.67 $\pm$ 0.12	0.26 $\pm$ 0.07	1.36 $\pm$ 0.28	0.58 $\pm$ 0.12	1.16 $\pm$ 0.34
Red Fox	263	1.30 $\pm$ 0.20	1.56 $\pm$ 0.30	0.86 $\pm$ 0.18	1.43 $\pm$ 0.23	0.59 $\pm$ 0.18
Gray Fox	123	0.61 $\pm$ 0.11	0.70 $\pm$ 0.16	0.45 $\pm$ 0.14	0.63 $\pm$ 0.12	0.50 $\pm$ 0.29
Coyote	171	0.84 $\pm$ 0.21	0.47 $\pm$ 0.12	1.46 $\pm$ 0.46	0.83 $\pm$ 0.23	0.91 $\pm$ 0.34
Bobcat	33	0.16 $\pm$ 0.03	0.15 $\pm$ 0.04	0.18 $\pm$ 0.06	0.17 $\pm$ 0.04	0.13 $\pm$ 0.06
Raccoon	366	1.80 $\pm$ 0.22	2.02 $\pm$ 0.32	1.45 $\pm$ 0.23	1.91 $\pm$ 0.25	1.22 $\pm$ 0.38
Opossum	72	0.35 $\pm$ 0.06	0.21 $\pm$ 0.06	0.59 $\pm$ 0.14	0.39 $\pm$ 0.08	0.16 $\pm$ 0.09
Striped Skunk	41	0.20 $\pm$ 0.05	0.16 $\pm$ 0.06	0.28 $\pm$ 0.10	0.22 $\pm$ 0.06	0.09 $\pm$ 0.05
River Otter	8	0.04 $\pm$ 0.02	0.06 $\pm$ 0.04	0.00 $\pm$ 0.00	0.05 $\pm$ 0.03	0.00 $\pm$ 0.00
Mink	9	0.04 $\pm$ 0.02	0.05 $\pm$ 0.02	0.04 $\pm$ 0.03	0.05 $\pm$ 0.02	0.03 $\pm$ 0.03
Dog	385	1.90 $\pm$ 0.28	2.18 $\pm$ 0.38	1.42 $\pm$ 0.39	2.03 $\pm$ 0.29	1.19 $\pm$ 0.64
House Cat	164	0.81 $\pm$ 0.12	0.61 $\pm$ 0.13	1.13 $\pm$ 0.22	0.93 $\pm$ 0.14	0.16 $\pm$ 0.08
Hunter	885	4.36 $\pm$ 0.58	3.58 $\pm$ 0.69	5.67 $\pm$ 0.95	3.66 $\pm$ 0.54	8.14 $\pm$ 1.77
Total Hunters		374	258	153	348	95
Total Hunts		4,735	2,974	1,761	4,079	656
Avg. Hrs. Per Hunt		4.27 $\pm$ 0.03	4.27 $\pm$ 0.04	4.31 $\pm$ 0.05	4.19 $\pm$ 0.04	4.87 $\pm$ 0.10

Table 2. Observations of selected animals (per 100 hours hunting) by cooperating archery hunters from 4 October to 14 November 2008 on private and public lands east (EBR) and west (WBR) of the Blue Ridge Mountains in Virginia.

Animal	<u>Animals Seen/100 hrs. <math>\pm</math> SE</u>			
	EBR		WBR	
	Private Land	Public Land	Private Land	Public Land
Deer (antlered)	17.89 $\pm$ 1.64	8.53 $\pm$ 2.04	16.56 $\pm$ 2.16	9.34 $\pm$ 1.80
Deer (doe)	34.72 $\pm$ 4.37	13.38 $\pm$ 1.91	48.91 $\pm$ 4.28	21.08 $\pm$ 2.88
Deer (fawn)	17.55 $\pm$ 3.05	5.16 $\pm$ 1.33	23.12 $\pm$ 3.37	4.96 $\pm$ 0.88
Deer (unknown)	11.72 $\pm$ 1.99	4.62 $\pm$ 0.83	14.12 $\pm$ 1.83	11.48 $\pm$ 2.72
Gray Squirrel	106.41 $\pm$ 6.29	77.90 $\pm$ 9.18	91.02 $\pm$ 6.13	67.95 $\pm$ 7.10
Fox Squirrel	2.54 $\pm$ 1.10	1.10 $\pm$ 1.03	19.08 $\pm$ 2.78	6.26 $\pm$ 1.39
Turkey (bearded)	3.62 $\pm$ 0.43	1.02 $\pm$ 0.49	5.83 $\pm$ 1.57	4.49 $\pm$ 1.31
Turkey (no beard)	12.79 $\pm$ 1.66	5.01 $\pm$ 1.53	16.73 $\pm$ 3.30	4.70 $\pm$ 1.23
Turkey (unknown)	6.84 $\pm$ 0.81	7.27 $\pm$ 3.68	9.43 $\pm$ 2.06	7.46 $\pm$ 2.63
Turkey (total)	23.25 $\pm$ 2.10	13.30 $\pm$ 4.06	31.99 $\pm$ 5.23	16.65 $\pm$ 3.28
Grouse	0.04 $\pm$ 0.02	0.00 $\pm$ 0.00	1.17 $\pm$ 0.41	2.92 $\pm$ 0.98
Bear (adult)	0.22 $\pm$ 0.06	0.08 $\pm$ 0.08	0.95 $\pm$ 0.24	1.46 $\pm$ 0.49
Bear (cub)	0.06 $\pm$ 0.03	0.00 $\pm$ 0.00	0.23 $\pm$ 0.09	0.42 $\pm$ 0.17
Bear (total)	0.28 $\pm$ 0.08	0.08 $\pm$ 0.08	1.18 $\pm$ 0.29	1.88 $\pm$ 0.53
Red Fox	1.65 $\pm$ 0.33	0.70 $\pm$ 0.36	0.97 $\pm$ 0.23	0.52 $\pm$ 0.19
Gray Fox	0.75 $\pm$ 0.17	0.23 $\pm$ 0.13	0.37 $\pm$ 0.09	0.68 $\pm$ 0.47
Coyote	0.51 $\pm$ 0.13	0.16 $\pm$ 0.11	1.48 $\pm$ 0.55	1.41 $\pm$ 0.55
Bobcat	0.16 $\pm$ 0.05	0.08 $\pm$ 0.07	0.19 $\pm$ 0.07	0.16 $\pm$ 0.09
Raccoon	1.62 $\pm$ 0.45	2.04 $\pm$ 0.57	2.40 $\pm$ 0.61	1.11 $\pm$ 0.27
Opossum	0.34 $\pm$ 0.14	0.17 $\pm$ 0.06	0.13 $\pm$ 0.09	0.27 $\pm$ 0.15
Striped Skunk	0.18 $\pm$ 0.06	0.00 $\pm$ 0.00	0.32 $\pm$ 0.13	0.16 $\pm$ 0.09
River Otter	0.07 $\pm$ 0.04	0.00 $\pm$ 0.00	0.00 $\pm$ 0.00	0.00 $\pm$ 0.00
Mink	0.04 $\pm$ 0.02	0.08 $\pm$ 0.08	0.05 $\pm$ 0.04	0.00 $\pm$ 0.00
Dog	2.21 $\pm$ 0.35	1.96 $\pm$ 1.58	1.68 $\pm$ 0.51	0.68 $\pm$ 0.24
House Cat	0.66 $\pm$ 0.14	0.23 $\pm$ 0.17	1.48 $\pm$ 0.29	0.10 $\pm$ 0.07
Hunter	3.24 $\pm$ 0.72	6.65 $\pm$ 2.22	4.50 $\pm$ 0.71	9.13 $\pm$ 2.55
Total Hunters	245	36	134	61
Total Hunts	2,707	267	1,372	389
Avg. Hrs. Per Hunt	4.22 $\pm$ 0.05	4.79 $\pm$ 0.16	4.13 $\pm$ 0.06	4.93 $\pm$ 0.12

Table 3. Observations of selected animals (per 100 hours hunting) by cooperating archery hunters from 4 October to 14 November 2008 within geographic regions of Virginia.

Animal	<u>Animals Seen/ 100 hrs. <math>\pm</math> SE</u>				
	Tidewater	S. Piedmont	N. Piedmont	S. Mountain	N. Mountain
Deer (antlered)	15.91 $\pm$ 1.52	13.41 $\pm$ 1.34	21.98 $\pm$ 4.31	14.39 $\pm$ 1.57	15.10 $\pm$ 3.19
Deer (doe)	24.64 $\pm$ 2.46	27.61 $\pm$ 3.35	47.77 $\pm$ 12.05	43.05 $\pm$ 4.71	40.65 $\pm$ 5.30
Deer (fawn)	14.60 $\pm$ 1.86	10.56 $\pm$ 1.55	24.54 $\pm$ 8.61	19.74 $\pm$ 4.54	17.26 $\pm$ 2.52
Deer (unknown)	9.66 $\pm$ 1.14	8.37 $\pm$ 0.91	15.49 $\pm$ 5.64	14.44 $\pm$ 1.85	12.41 $\pm$ 2.57
Gray Squirrel	90.16 $\pm$ 7.12	87.18 $\pm$ 8.50	137.62 $\pm$ 12.82	68.00 $\pm$ 6.05	103.31 $\pm$ 8.23
Fox Squirrel	0.13 $\pm$ 0.08	2.07 $\pm$ 0.93	5.58 $\pm$ 3.13	11.87 $\pm$ 1.63	20.03 $\pm$ 4.11
Turkey (bearded)	3.39 $\pm$ 0.64	3.76 $\pm$ 0.67	2.89 $\pm$ 0.76	8.22 $\pm$ 2.57	2.60 $\pm$ 0.64
Turkey (no beard)	9.66 $\pm$ 1.64	20.82 $\pm$ 4.00	5.61 $\pm$ 1.29	20.92 $\pm$ 4.59	6.07 $\pm$ 1.13
Turkey (unknown)	6.48 $\pm$ 1.17	8.24 $\pm$ 1.62	5.95 $\pm$ 1.60	13.36 $\pm$ 3.05	4.26 $\pm$ 0.85
Turkey (total)	19.54 $\pm$ 2.67	32.82 $\pm$ 4.67	14.44 $\pm$ 2.22	42.51 $\pm$ 7.36	12.93 $\pm$ 1.54
Grouse	0.00 $\pm$ 0.00	0.12 $\pm$ 0.07	0.00 $\pm$ 0.00	1.93 $\pm$ 0.79	1.27 $\pm$ 0.50
Bear (adult)	0.02 $\pm$ 0.02	0.25 $\pm$ 0.09	0.39 $\pm$ 0.16	0.82 $\pm$ 0.22	1.36 $\pm$ 0.42
Bear (cub)	0.00 $\pm$ 0.00	0.02 $\pm$ 0.02	0.16 $\pm$ 0.07	0.23 $\pm$ 0.10	0.33 $\pm$ 0.12
Bear (total)	0.02 $\pm$ 0.02	0.27 $\pm$ 0.10	0.55 $\pm$ 0.21	1.05 $\pm$ 0.30	1.68 $\pm$ 0.49
Red Fox	0.67 $\pm$ 0.15	0.64 $\pm$ 0.21	3.65 $\pm$ 0.89	0.59 $\pm$ 0.18	1.14 $\pm$ 0.31
Gray Fox	0.92 $\pm$ 0.34	0.62 $\pm$ 0.22	0.52 $\pm$ 0.16	0.21 $\pm$ 0.08	0.70 $\pm$ 0.26
Coyote	0.21 $\pm$ 0.10	0.66 $\pm$ 0.28	0.60 $\pm$ 0.22	2.08 $\pm$ 0.85	0.81 $\pm$ 0.28
Bobcat	0.10 $\pm$ 0.08	0.25 $\pm$ 0.08	0.10 $\pm$ 0.05	0.26 $\pm$ 0.10	0.11 $\pm$ 0.05
Raccoon	2.04 $\pm$ 0.57	1.62 $\pm$ 0.45	2.40 $\pm$ 0.61	1.77 $\pm$ 0.37	1.11 $\pm$ 0.27
Opossum	0.17 $\pm$ 0.06	0.34 $\pm$ 0.14	0.13 $\pm$ 0.09	0.90 $\pm$ 0.22	0.27 $\pm$ 0.15
Striped Skunk	0.06 $\pm$ 0.05	0.15 $\pm$ 0.06	0.29 $\pm$ 0.17	0.21 $\pm$ 0.09	0.35 $\pm$ 0.17
River Otter	0.10 $\pm$ 0.09	0.07 $\pm$ 0.06	0.00 $\pm$ 0.00	0.00 $\pm$ 0.00	0.00 $\pm$ 0.00
Mink	0.06 $\pm$ 0.04	0.02 $\pm$ 0.02	0.05 $\pm$ 0.04	0.03 $\pm$ 0.03	0.05 $\pm$ 0.05
Dog	1.08 $\pm$ 0.24	3.25 $\pm$ 0.82	2.42 $\pm$ 0.85	2.03 $\pm$ 0.65	0.79 $\pm$ 0.44
House Cat	0.23 $\pm$ 0.08	0.76 $\pm$ 0.17	0.94 $\pm$ 0.39	1.26 $\pm$ 0.38	1.00 $\pm$ 0.23
Hunter	4.12 $\pm$ 1.14	1.94 $\pm$ 0.48	4.64 $\pm$ 1.68	5.86 $\pm$ 1.22	5.47 $\pm$ 1.47
Total Hunters	100	93	96	80	74
Total Hunts	1,097	961	916	918	843
Avg. Hrs. Per Hunt	4.38 $\pm$ 0.07	4.23 $\pm$ 0.08	4.19 $\pm$ 0.08	4.24 $\pm$ 0.08	4.38 $\pm$ 0.08

Table 4. Observations (per 100 hours of hunting) of selected animals by cooperating archery hunters by week from 4 October to 14 November 2008 in Virginia.

Animal	<u>Animals Seen/100 hrs. + SE</u>						
	Day 1 (10/4)	Week 1 (10/6-11)	Week 2 (10/13-18)	Week 3 (10/20-25)	Week 4 (10/27-11/1)	Week 5 (11/3-8)	Week 6 (11/10-14)
Deer (antlered)	17.04 ± 1.67	12.48 ± 0.98	14.94 ± 1.57	17.78 ± 2.17	19.21 ± 1.87	16.36 ± 1.57	16.26 ± 2.01
Deer (doe)	37.99 ± 3.35	34.83 ± 2.32	31.61 ± 2.69	41.98 ± 5.37	37.32 ± 4.05	35.53 ± 4.16	33.77 ± 3.92
Deer (fawn)	20.71 ± 1.98	20.22 ± 2.07	17.10 ± 2.39	19.57 ± 3.75	16.81 ± 2.54	13.75 ± 2.06	10.65 ± 1.56
Deer (unknown)	9.70 ± 1.09	9.98 ± 0.99	12.60 ± 1.38	16.51 ± 4.15	11.54 ± 1.10	11.17 ± 2.19	11.21 ± 1.70
Gray Squirrel	90.47 ± 4.68	90.71 ± 4.98	95.09 ± 5.29	98.54 ± 5.31	107.22 ± 5.84	99.13 ± 7.45	92.45 ± 7.62
Fox Squirrel	5.33 ± 1.02	5.51 ± 0.89	6.93 ± 1.28	8.29 ± 1.74	9.38 ± 1.84	8.83 ± 2.25	7.04 ± 1.56
Turkey (bearded)	3.55 ± 0.84	4.24 ± 0.67	2.46 ± 0.52	4.50 ± 0.72	4.96 ± 1.24	4.78 ± 1.45	4.45 ± 1.29
Turkey (no beard)	13.85 ± 3.55	11.80 ± 1.85	9.89 ± 1.87	12.62 ± 2.34	13.24 ± 2.06	16.19 ± 3.83	11.49 ± 3.03
Turkey (unknown)	8.88 ± 2.30	7.64 ± 1.50	8.32 ± 1.61	6.07 ± 1.46	8.68 ± 1.85	7.09 ± 1.40	7.13 ± 2.43
Turkey (total)	26.27 ± 4.51	23.68 ± 2.71	20.67 ± 2.77	23.19 ± 3.33	26.88 ± 3.45	28.07 ± 4.59	23.07 ± 4.58
Grouse	0.30 ± 0.13	0.62 ± 0.17	0.74 ± 0.25	0.36 ± 0.12	1.10 ± 0.54	0.40 ± 0.18	0.69 ± 0.43
Bear (adult)	0.89 ± 0.30	0.83 ± 0.23	0.65 ± 0.17	0.36 ± 0.13	0.33 ± 0.11	0.27 ± 0.09	0.46 ± 0.16
Bear (cub)	0.18 ± 0.13	0.18 ± 0.09	0.12 ± 0.07	0.23 ± 0.13	0.09 ± 0.05	0.00 ± 0.00	0.19 ± 0.13
Bear (total)	1.07 ± 0.39	1.01 ± 0.26	0.77 ± 0.23	0.59 ± 0.21	0.43 ± 0.13	0.27 ± 0.09	0.65 ± 0.24
Red Fox	1.60 ± 0.38	1.30 ± 0.29	1.14 ± 0.25	0.88 ± 0.22	1.37 ± 0.26	1.74 ± 0.51	1.16 ± 0.34
Gray Fox	0.83 ± 0.27	0.57 ± 0.16	0.62 ± 0.16	0.68 ± 0.24	0.67 ± 0.18	0.50 ± 0.17	0.42 ± 0.15
Coyote	0.83 ± 0.27	0.88 ± 0.29	1.88 ± 0.89	0.62 ± 0.20	0.64 ± 0.17	0.47 ± 0.19	0.37 ± 0.15
Bobcat	0.12 ± 0.08	0.23 ± 0.08	0.15 ± 0.07	0.10 ± 0.06	0.12 ± 0.06	0.30 ± 0.10	0.05 ± 0.05

Table 4 (continued). Observations (per 100 hours of hunting) of selected animals by cooperating archery hunters by week from 4 October to 14 November 2008 in Virginia.

Animal	<u>Animals Seen/100 hrs. + SE</u>						
	Day 1 (10/4)	Week 1 (10/6-11)	Week 2 (10/13-18)	Week 3 (10/20-25)	Week 4 (10/27-11/1)	Week 5 (11/3-8)	Week 6 (11/10-14)
Raccoon	2.66 ± 0.73	1.82 ± 0.36	1.94 ± 0.44	2.54 ± 0.51	1.34 ± 0.31	1.64 ± 0.49	0.79 ± 0.25
Opossum	0.18 ± 0.13	0.23 ± 0.09	0.80 ± 0.19	0.36 ± 0.16	0.15 ± 0.07	0.33 ± 0.14	0.37 ± 0.16
Striped Skunk	0.12 ± 0.12	0.23 ± 0.08	0.15 ± 0.07	0.33 ± 0.10	0.12 ± 0.07	0.27 ± 0.14	0.14 ± 0.08
River Otter	0.00 ± 0.00	0.00 ± 0.00	0.12 ± 0.10	0.07 ± 0.05	0.00 ± 0.00	0.07 ± 0.07	0.00 ± 0.00
Mink	0.06 ± 0.06	0.00 ± 0.00	0.03 ± 0.03	0.07 ± 0.05	0.03 ± 0.03	0.00 ± 0.00	0.19 ± 0.11
Dog	2.07 ± 0.46	1.79 ± 0.36	2.06 ± 0.60	2.32 ± 0.44	1.83 ± 0.35	1.87 ± 0.50	1.25 ± 0.47
House Cat	0.71 ± 0.22	0.91 ± 0.20	1.32 ± 0.26	0.78 ± 0.20	0.64 ± 0.14	0.77 ± 0.21	0.28 ± 0.11
Hunter	6.09 ± 0.90	3.46 ± 0.62	4.10 ± 0.62	3.85 ± 0.65	4.54 ± 0.84	5.42 ± 1.03	4.03 ± 1.06
Total Hunters	299	328	320	300	302	207	172
Total Hunts	316	933	806	793	771	637	479
Avg. Hrs. Per Hunt	5.35 ± 0.14	4.12 ± 0.07	4.03 ± 0.08	3.87 ± 0.07	4.26 ± 0.09	4.69 ± 0.10	4.51 ± 0.12

Table 5. Doe-buck and fawn-doe ratio estimates (a) east and west of the Blue Ridge Mountains, (b) by land ownership, (c) by region, and (d) by week of survey season based on cooperating archery hunter observations in Virginia from 4 October to 14 November 2008.

(a)

Ratio	Statewide	East of BR	West of BR
Doe: Buck	2.24	1.92	2.84
Fawn: Doe	0.48	0.50	0.44

(b)

Ratio	Private	Public
Doe: Buck	2.26	2.00
Fawn: Doe	0.49	0.28

(c)

Ratio	Tidewater	S. Piedmont	N. Piedmont	S. Mountain	N. Mountain
Doe: Buck	1.55	2.06	2.17	2.99	2.69
Fawn: Doe	0.59	0.38	0.51	0.46	0.42

(d)

Ratio	Day 1	Week 1	Week 2	Week 3	Week 4	Week 5	Week 6
Doe: Buck	2.23	2.79	2.12	2.36	1.94	2.17	2.08
Fawn: Doe	0.55	0.58	0.54	0.47	0.45	0.39	0.32

Table 6. Statewide total observations and total observations per 100 hunts of miscellaneous animals by cooperating archery hunters 4 October to 14 November 2008 in Virginia.

Animal	Total Observations	Observations / 100 Hunts
Bats	0	0.00
Beaver	4	0.11
Buzzard	13	0.27
Chipmunk	150	3.17
Crow	627	13.24
Doves	66	1.39
Ducks	297	6.27
Eagle	41	0.87
Falcon	5	0.11
Flying Squirrels	0	0.00
Geese	276	5.83
Groundhog	82	1.73
Hawk	192	4.05
Hérons	18	0.38
Miscellaneous Birds	151	3.19
Mouse	0	0.00
Muskrat	2	0.04
Nutria	0	0.00
Owl	40	0.84
Pheasant	0	0.00
Quail	83	1.75
Rabbit	56	1.18
Red Squirrel	4	0.08
Shrew	0	0.00
Sika & Other Deer	0	0.00
Snake	4	0.08
Snipe	0	0.00
Turtles	9	0.19
Weasel	1	0.02
Woodcock	2	0.04





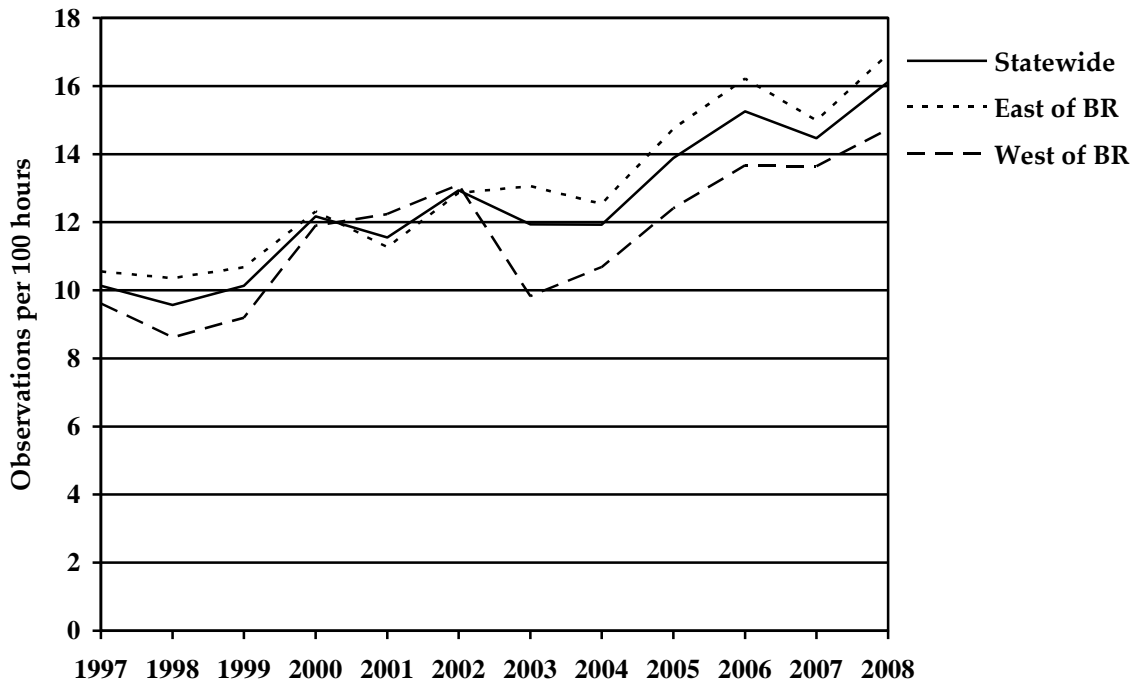


Figure 2. Antlered deer observed (per 100 hours of hunting) by cooperating early archery hunters from 1997-2008 east and west of the Blue Ridge Mountains and statewide in Virginia.

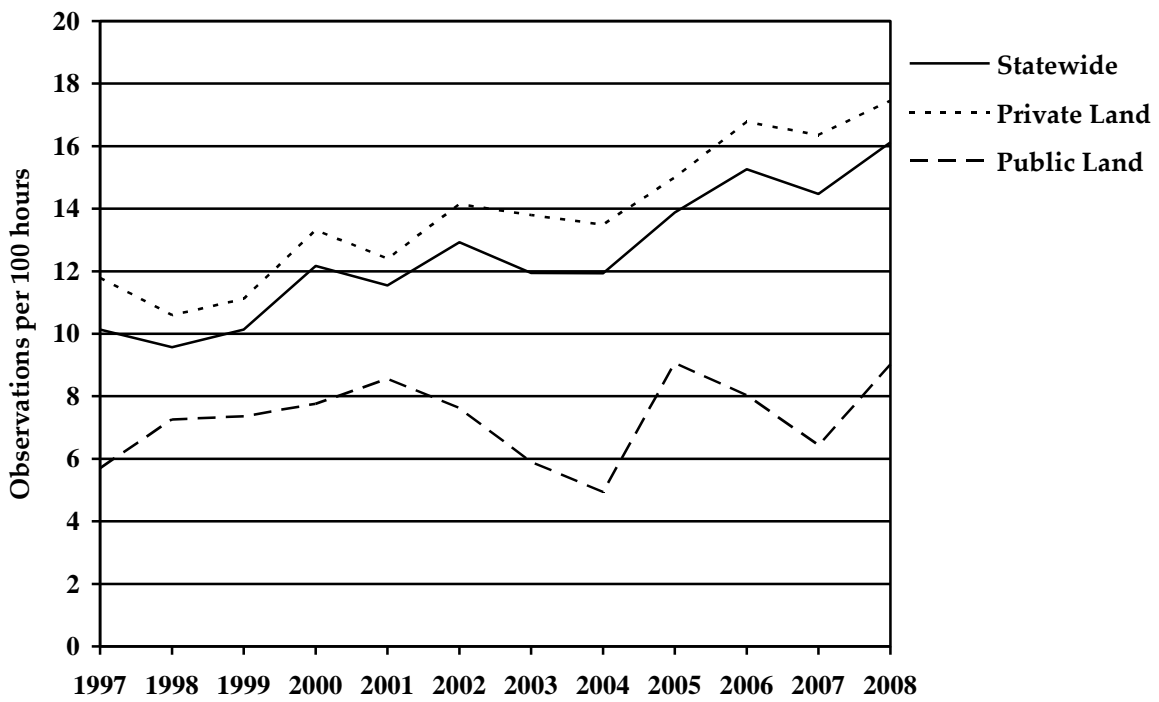


Figure 3. Antlered deer observed (per 100 hours of hunting) by cooperating early archery hunters from 1997-2008 by land ownership and statewide in Virginia.

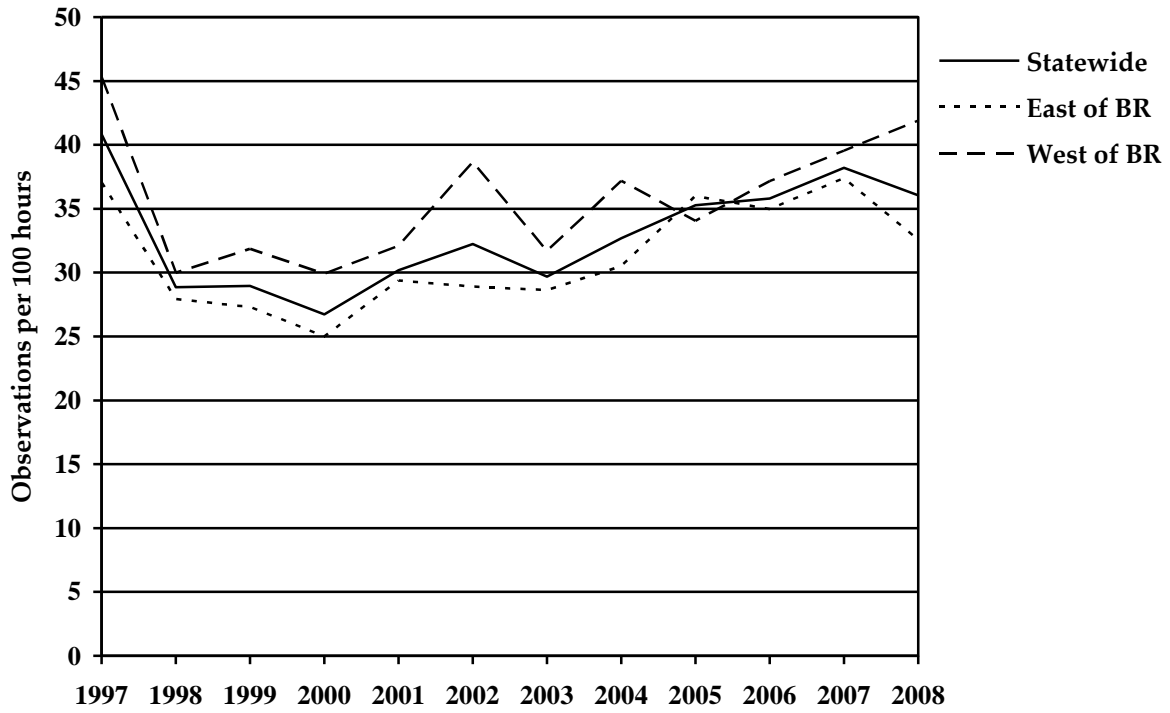


Figure 4. Doe deer observed (per 100 hours of hunting) by cooperating early archery hunters from 1997-2008 east and west of the Blue Ridge Mountains and statewide in Virginia.

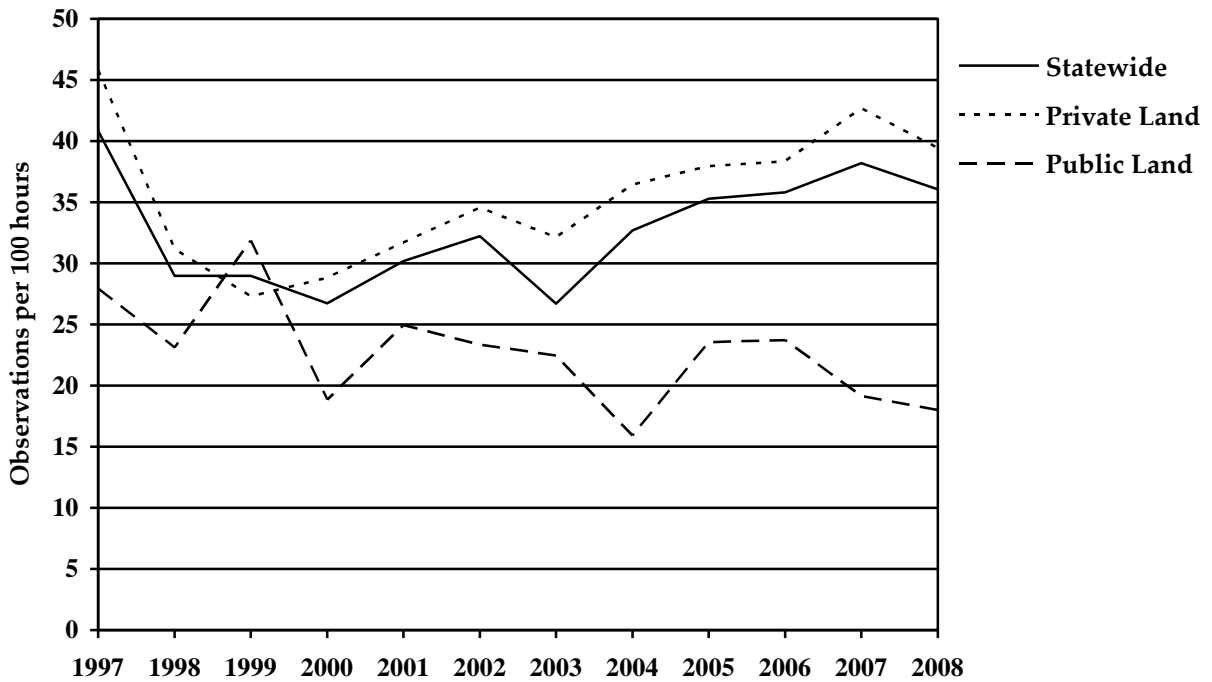


Figure 5. Doe deer observed (per 100 hours of hunting) by cooperating early archery hunters from 1997-2008 by land ownership and statewide in Virginia.

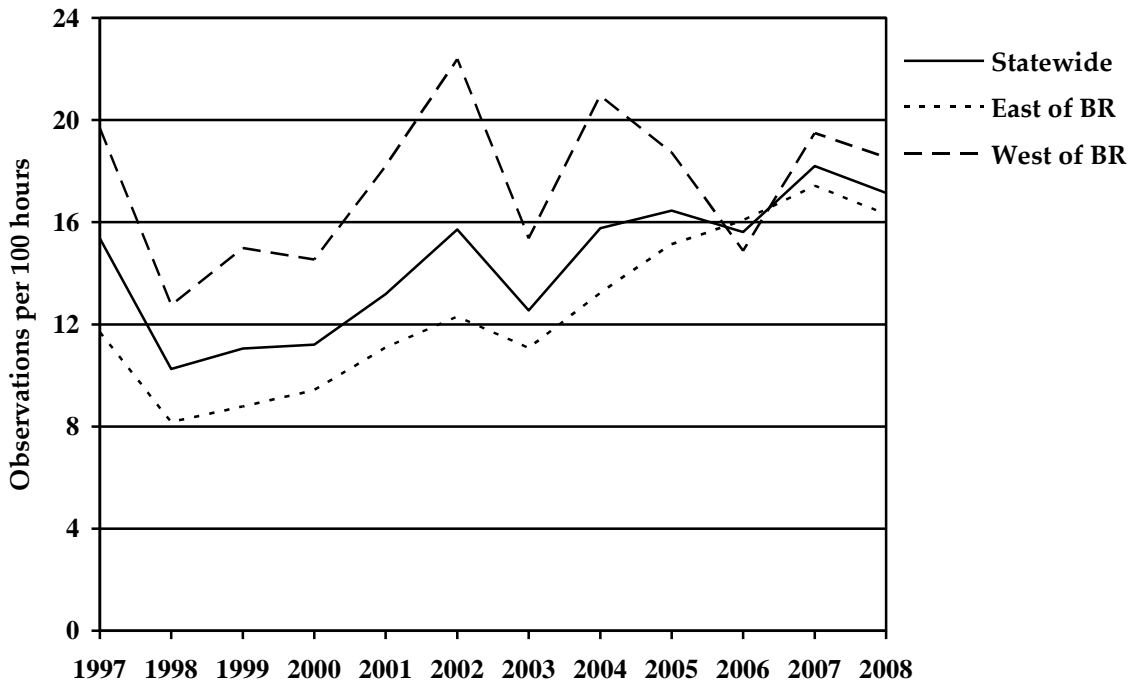


Figure 6. Fawns observed (per 100 hours of hunting) by cooperating early archery hunters from 1997-2008 east and west of the Blue Ridge Mountains and statewide in Virginia.

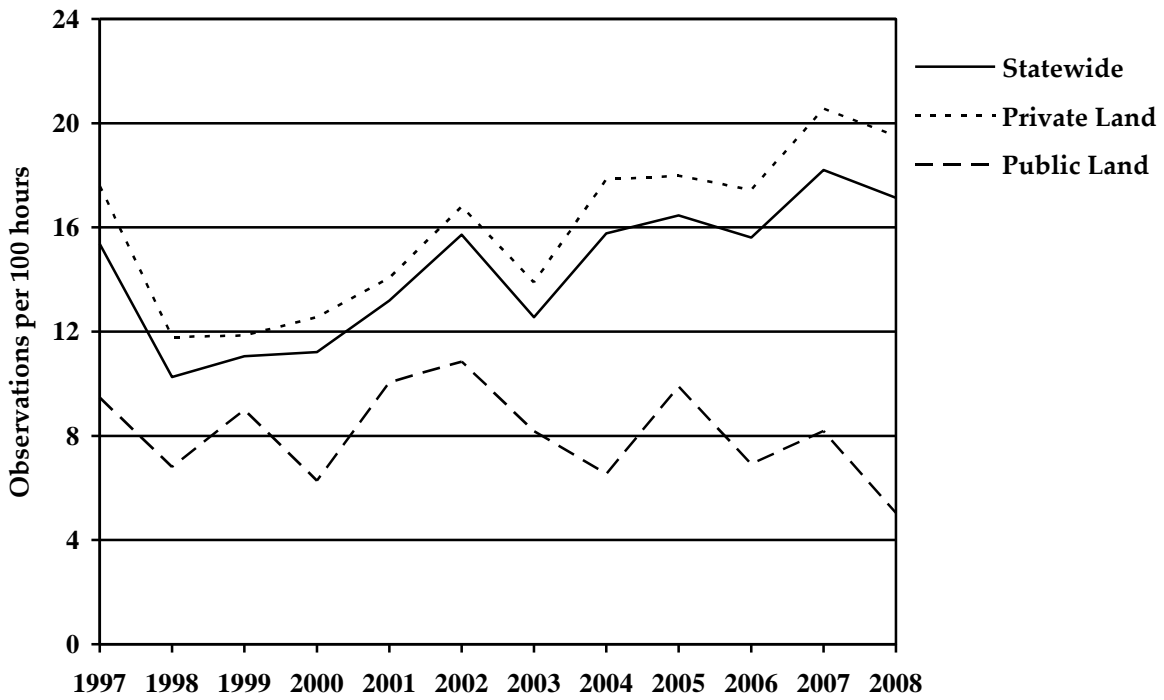


Figure 7. Fawns observed (per 100 hours of hunting) by cooperating early archery hunters from 1997-2008 by land ownership and statewide in Virginia.

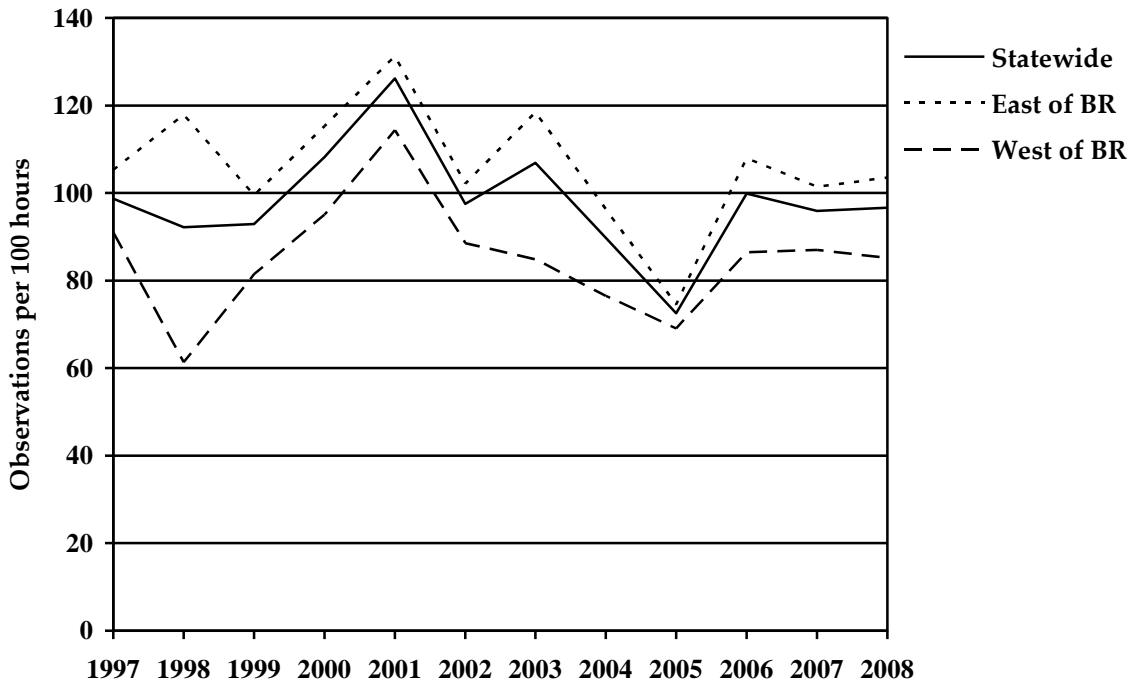


Figure 8. Gray squirrels observed (per 100 hours of hunting) by cooperating early archery hunters from 1997-2008 east and west of the Blue Ridge Mountains and statewide in Virginia.

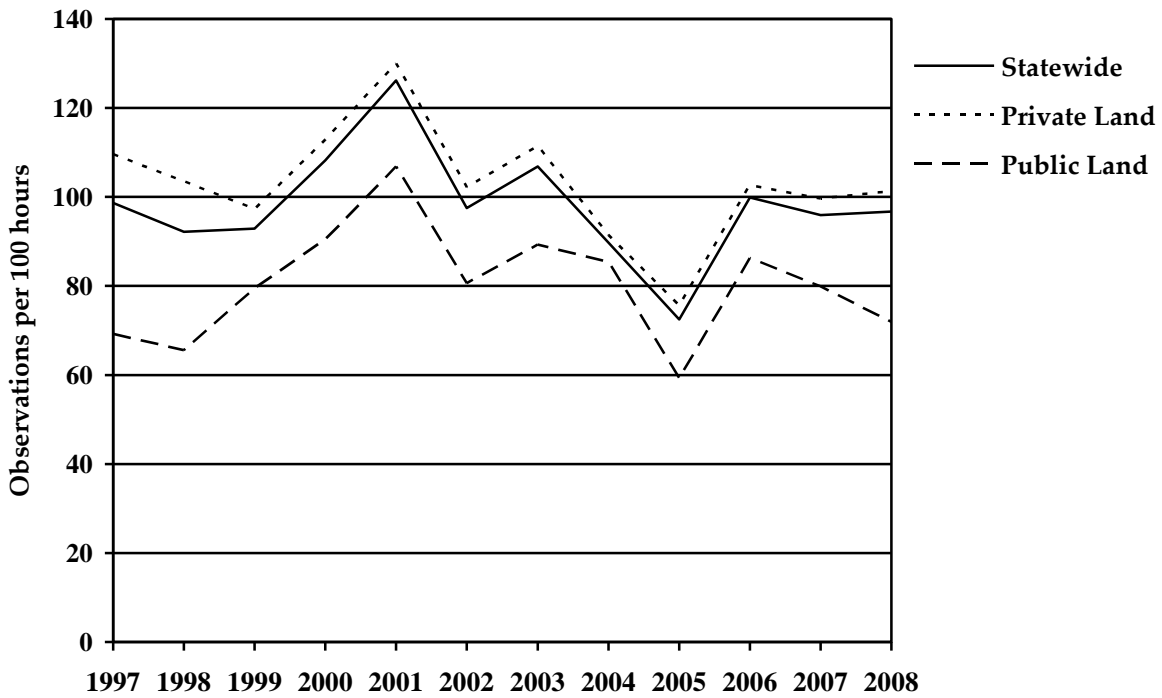


Figure 9. Gray squirrels observed (per 100 hours of hunting) by cooperating early archery hunters from 1997-2008 by land ownership and statewide in Virginia.

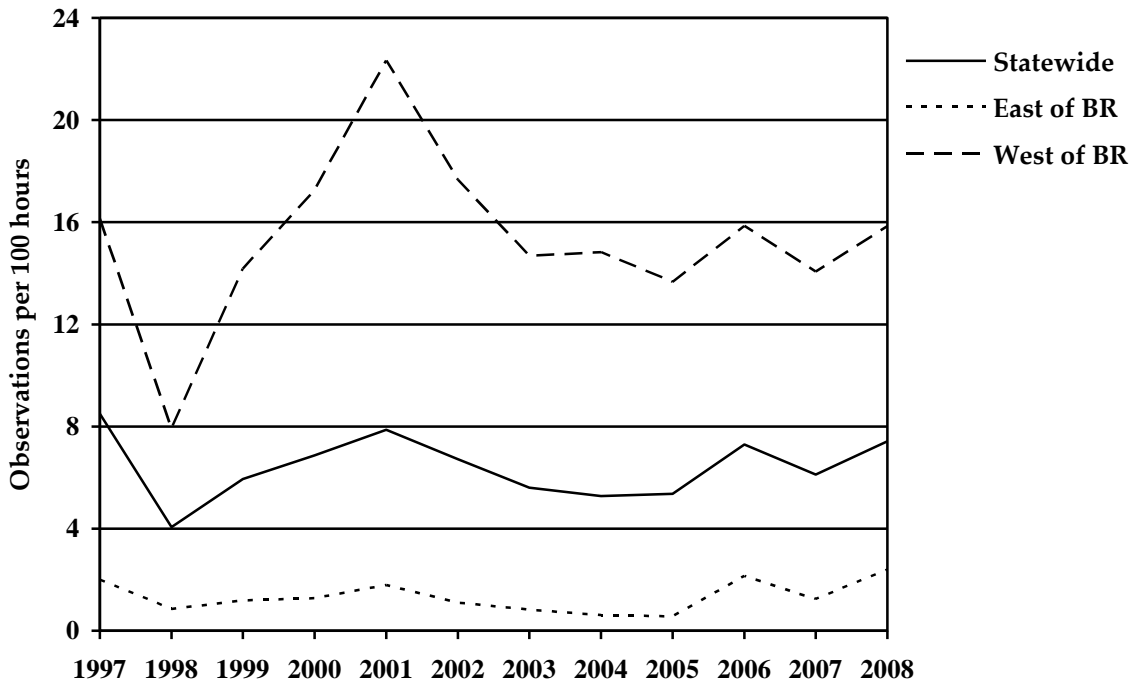


Figure 10. Fox squirrels observed (per 100 hours of hunting) by cooperating early archery hunters from 1997-2008 east and west of the Blue Ridge Mountains and statewide in Virginia.

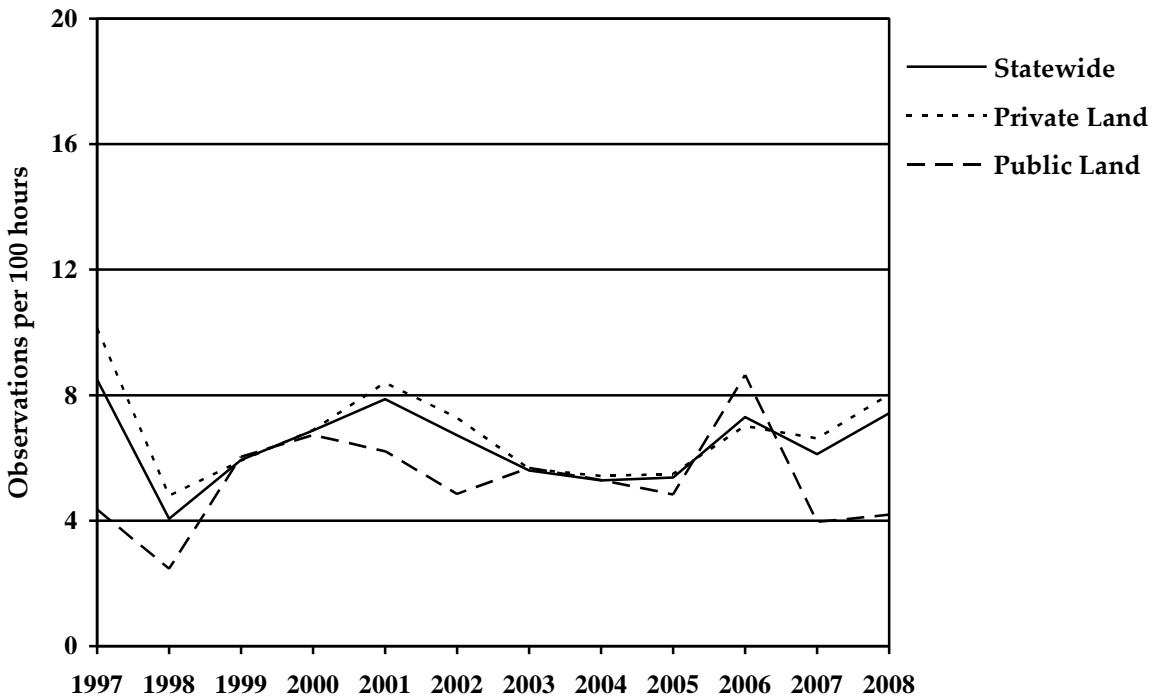


Figure 11. Fox squirrels observed (per 100 hours of hunting) by cooperating early archery hunters from 1997-2008 by land ownership and statewide in Virginia.

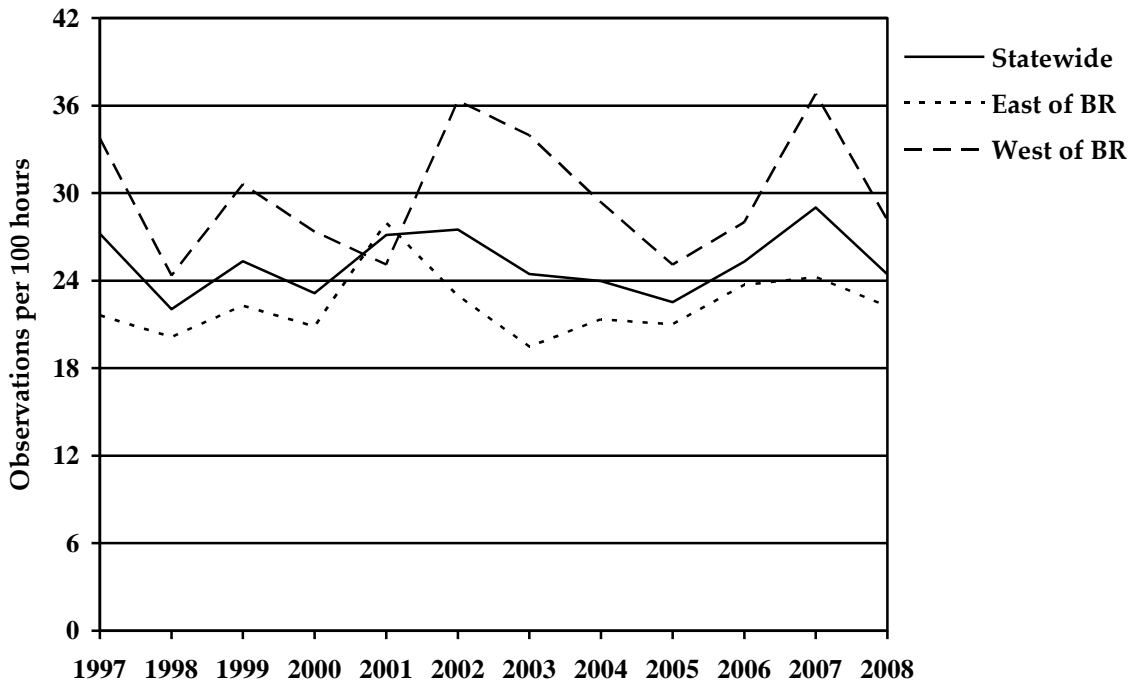


Figure 12. Wild turkeys observed (per 100 hours of hunting) by cooperating early archery hunters from 1997-2008 east and west of the Blue Ridge Mountains and statewide in Virginia.

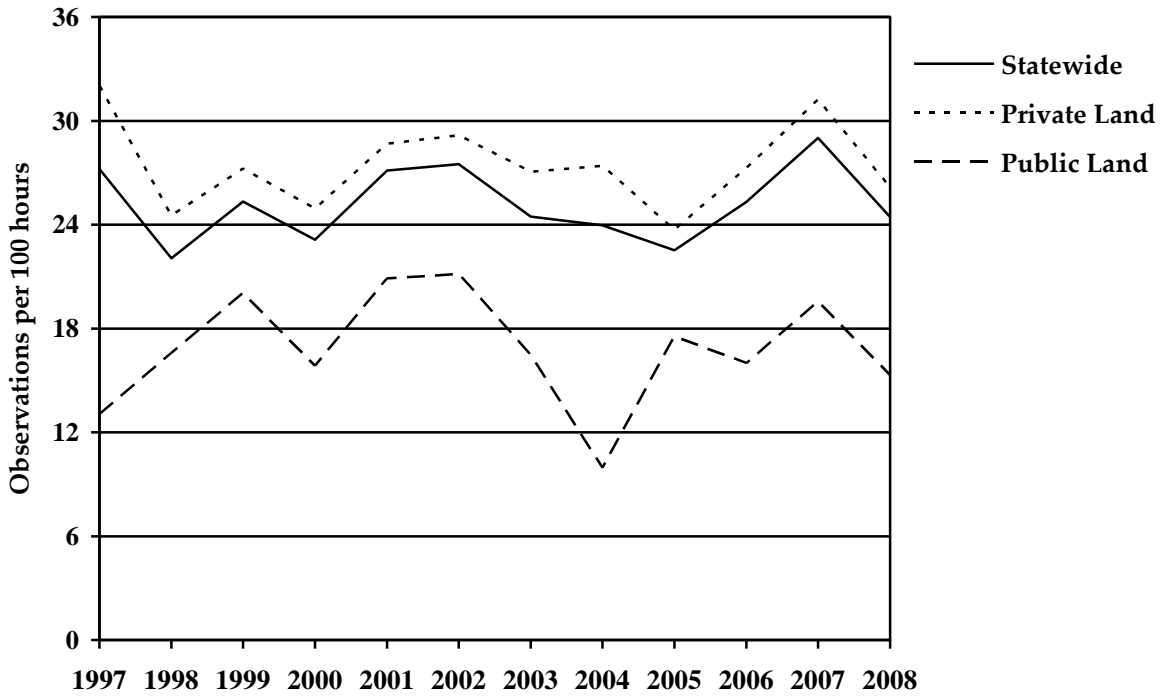


Figure 13. Wild turkeys observed (per 100 hours of hunting) by cooperating early archery hunters from 1997-2008 by land ownership and statewide in Virginia.

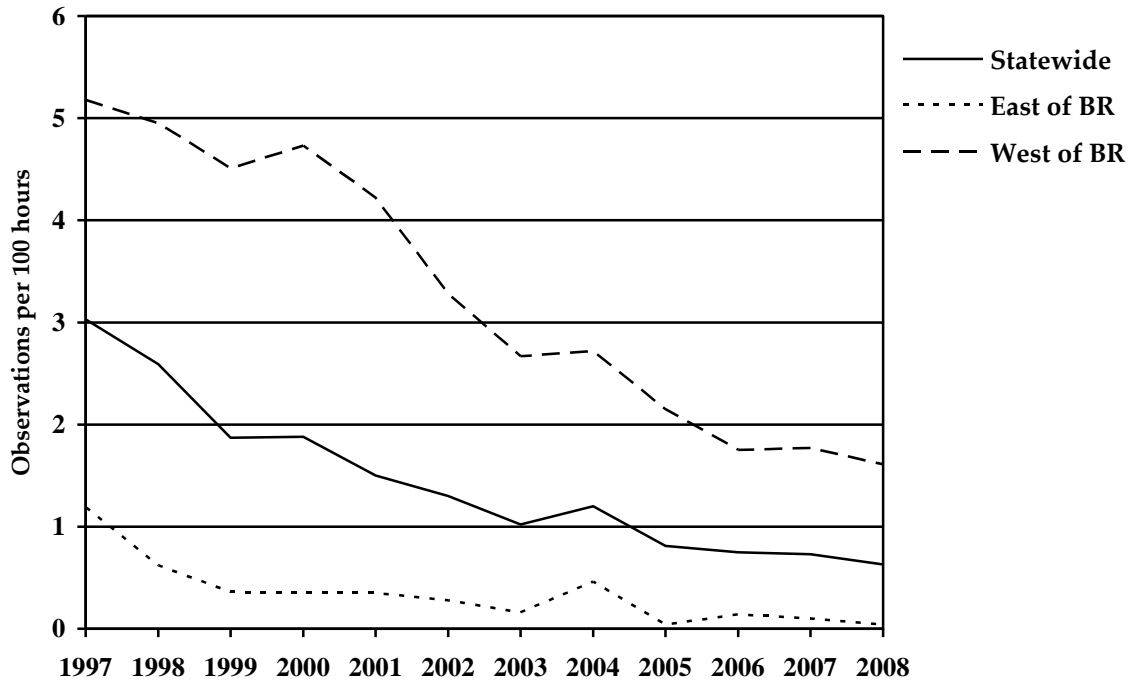


Figure 14. Ruffed grouse observed (per 100 hours of hunting) by cooperating early archery hunters from 1997-2008 east and west of the Blue Ridge Mountains and statewide in Virginia.

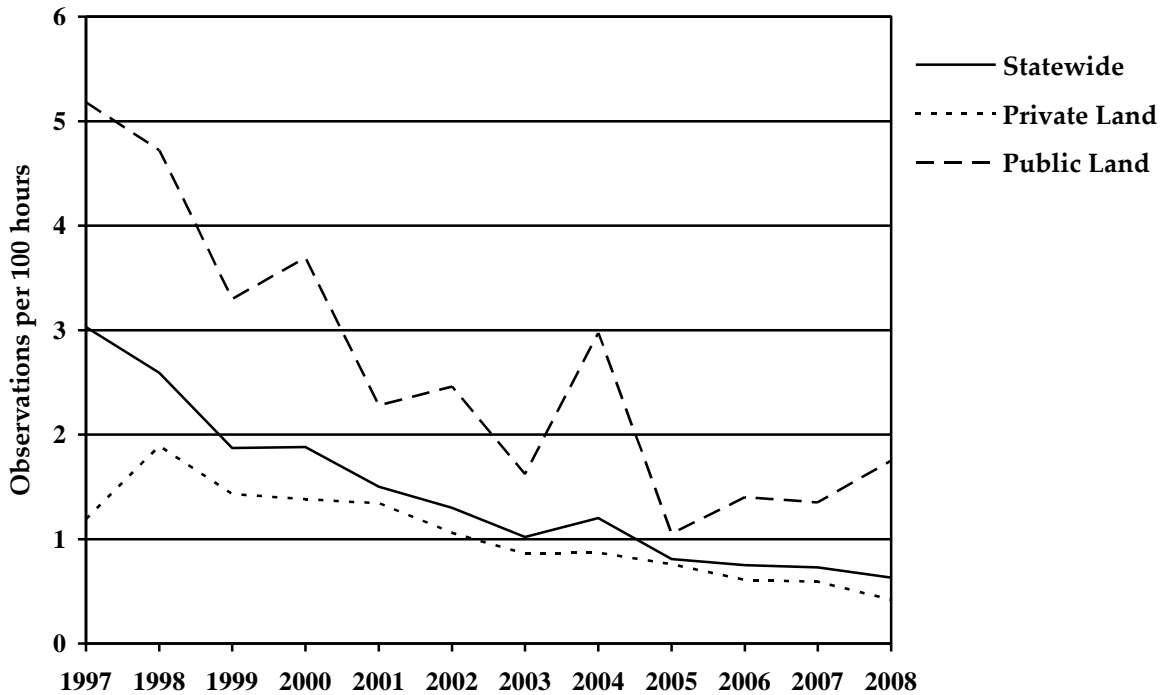


Figure 15. Ruffed grouse observed (per 100 hours of hunting) by cooperating early archery hunters from 1997-2008 by land ownership and statewide in Virginia.

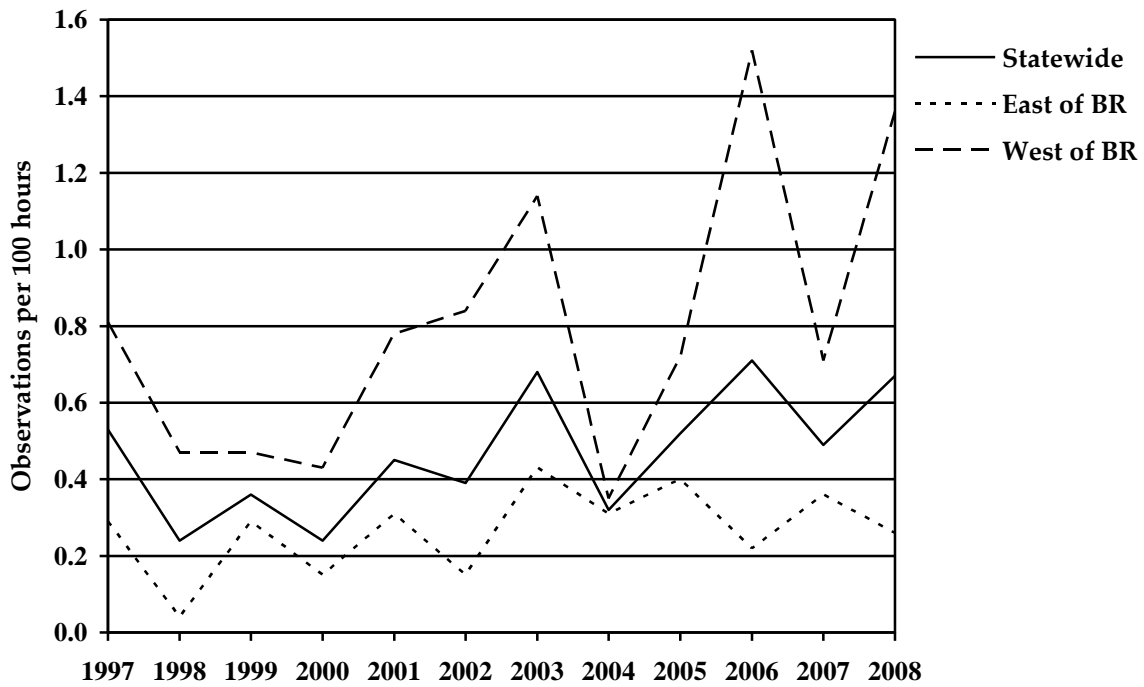


Figure 16. Black bears observed (per 100 hours of hunting) by cooperating early archery hunters from 1997-2008 east and west of the Blue Ridge Mountains and statewide in Virginia.

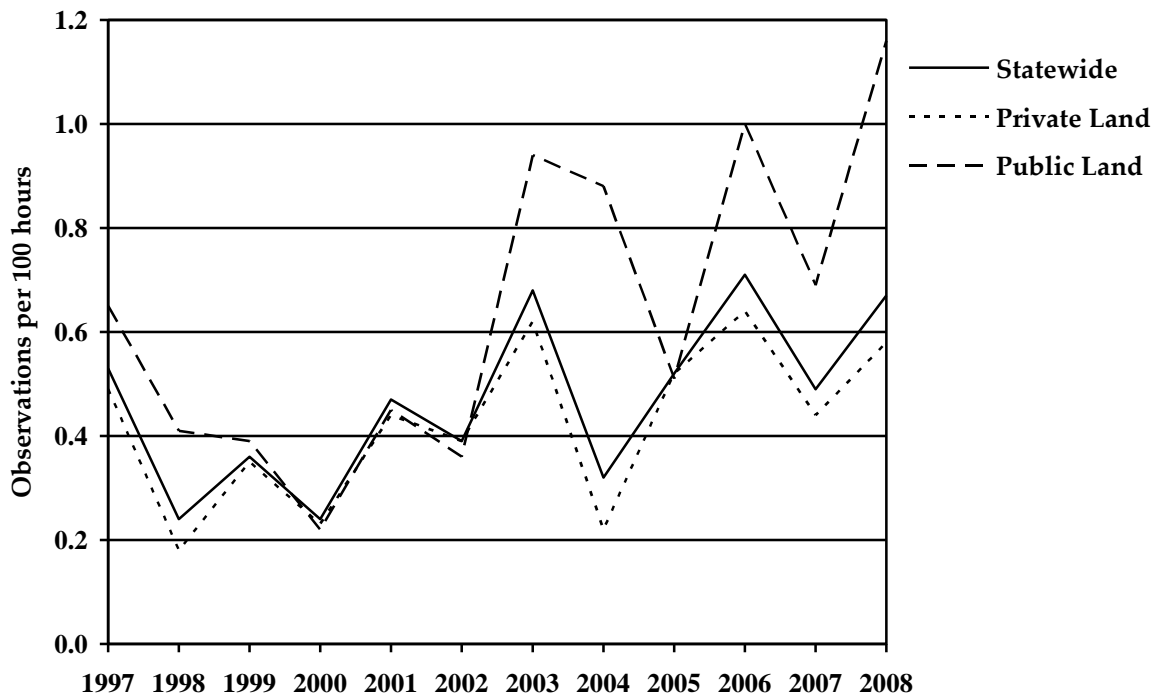


Figure 17. Black bears observed (per 100 hours of hunting) by cooperating early archery hunters from 1997-2008 by land ownership and statewide in Virginia.



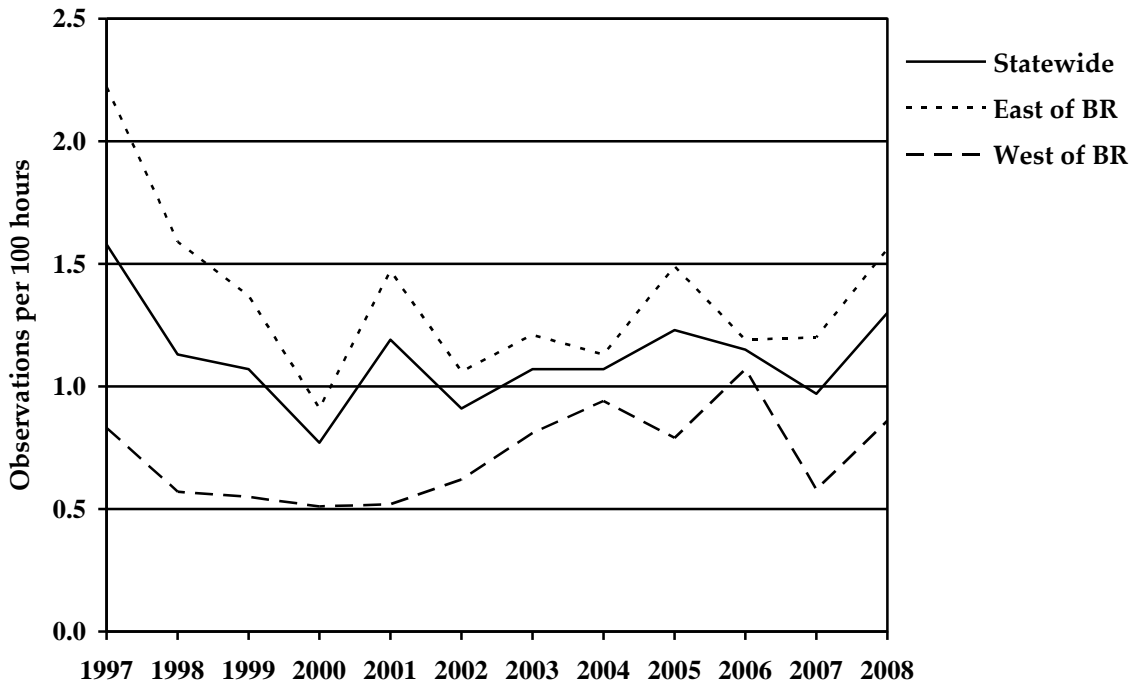


Figure 18. Red foxes observed (per 100 hours of hunting) by cooperating early archery hunters from 1997-2008 east and west of the Blue Ridge Mountains and statewide in Virginia.

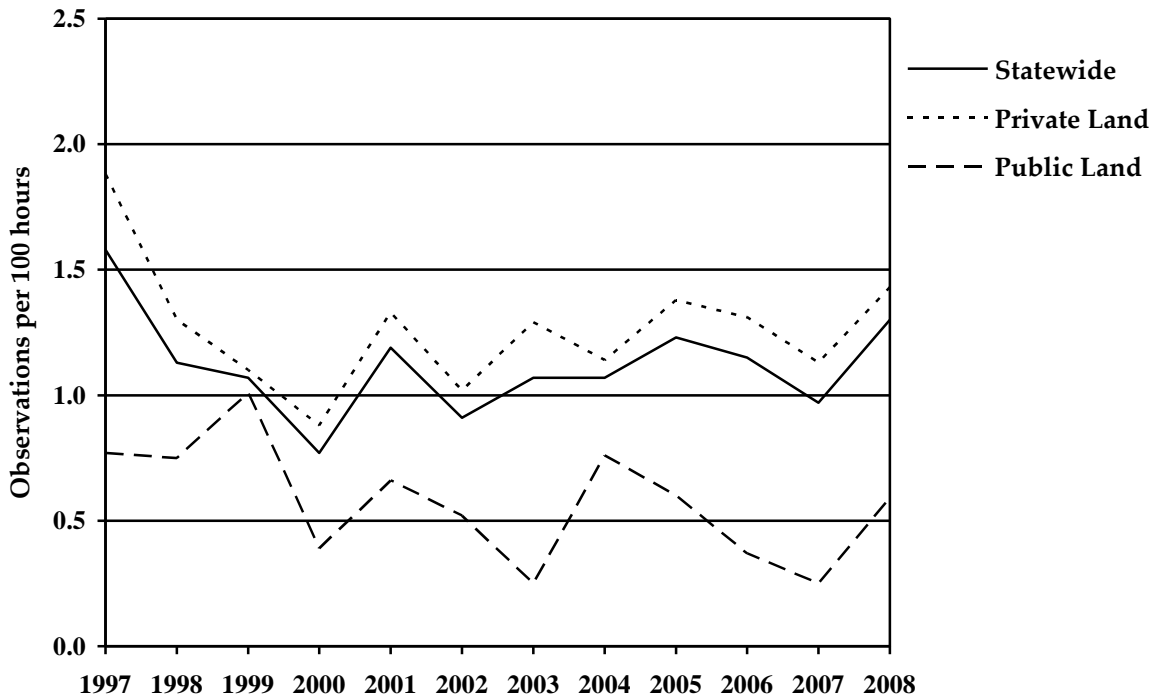


Figure 19. Red foxes observed (per 100 hours of hunting) by cooperating early archery hunters from 1997-2008 by land ownership and statewide in Virginia.

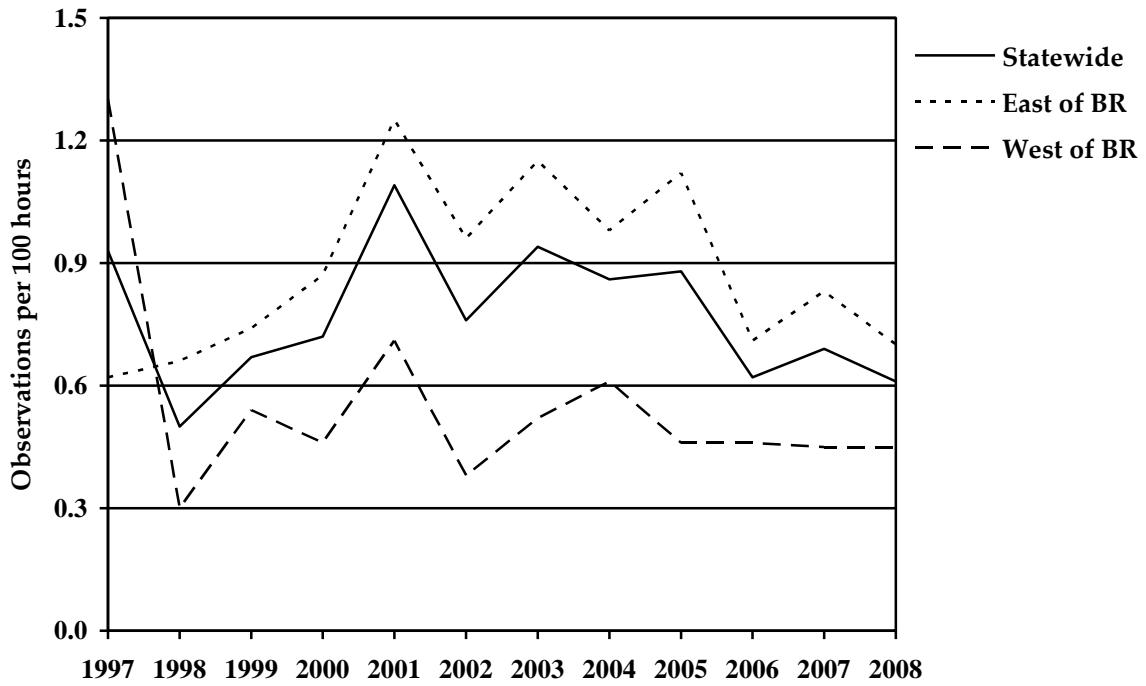


Figure 20. Gray foxes observed (per 100 hours of hunting) by cooperating early archery hunters from 1997-2007 east and west of the Blue Ridge Mountains and statewide in Virginia.

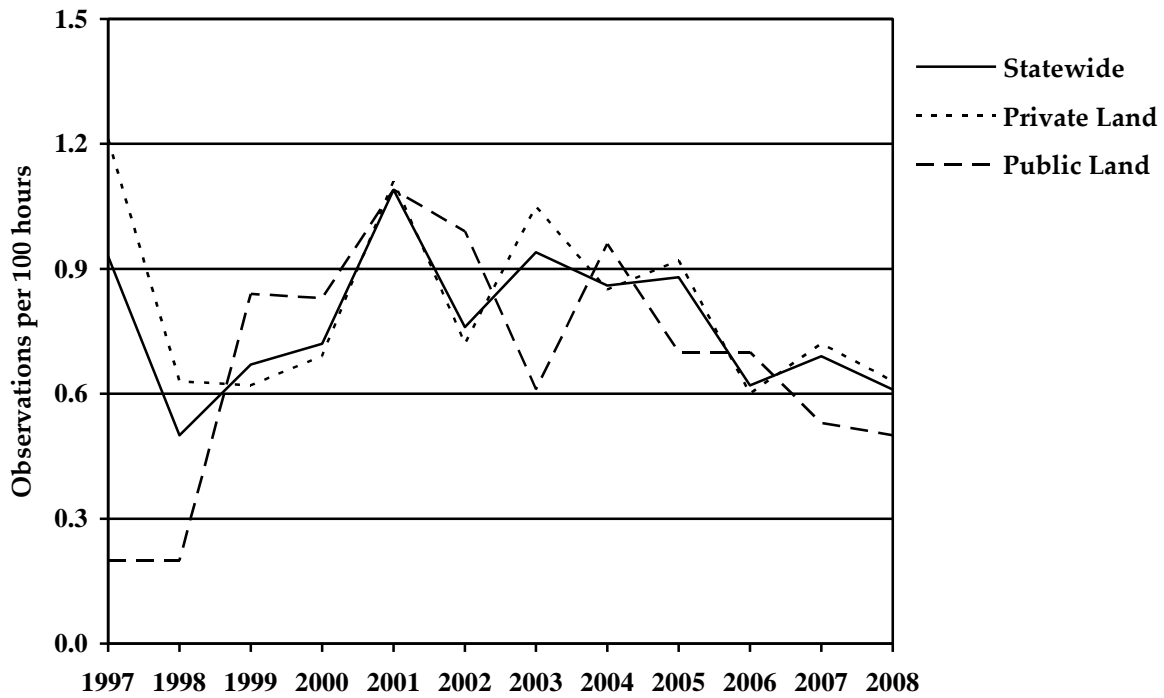


Figure 21. Gray foxes observed (per 100 hours of hunting) by cooperating early archery hunters from 1997-2007 by land ownership and statewide in Virginia.

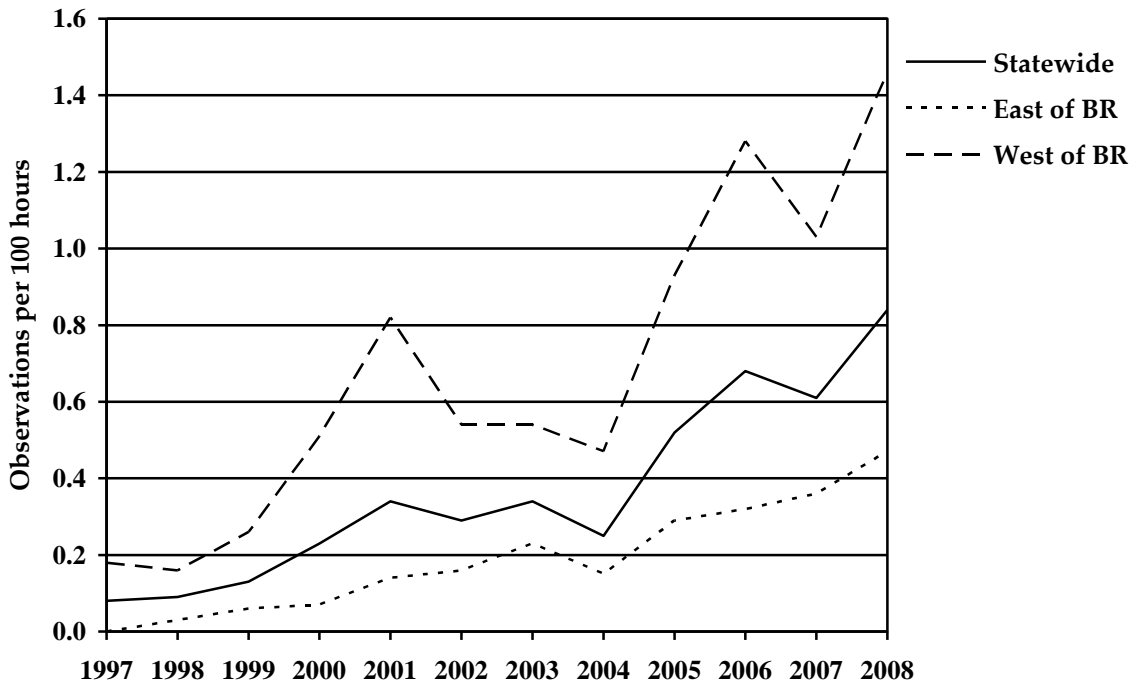


Figure 22. Coyotes observed (per 100 hours of hunting) by cooperating early archery hunters from 1997-2008 east and west of the Blue Ridge Mountains and statewide in Virginia.

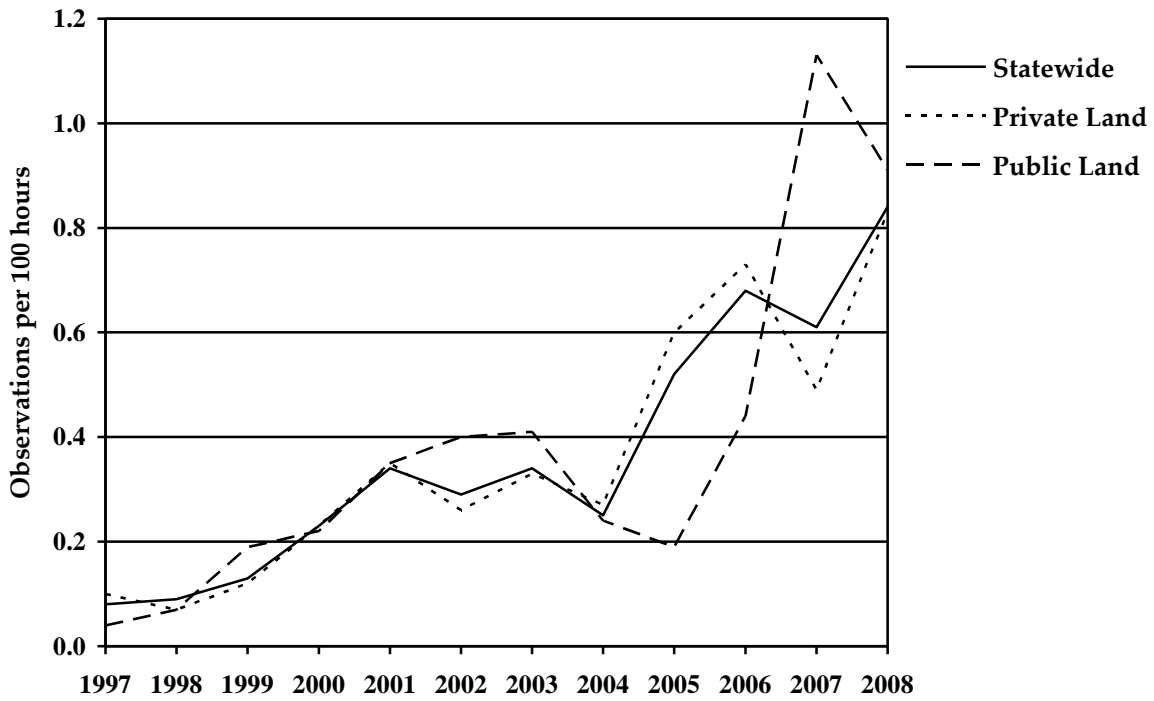


Figure 23. Coyotes observed (per 100 hours of hunting) by cooperating early archery hunters from 1997-2008 by land ownership and statewide in Virginia.

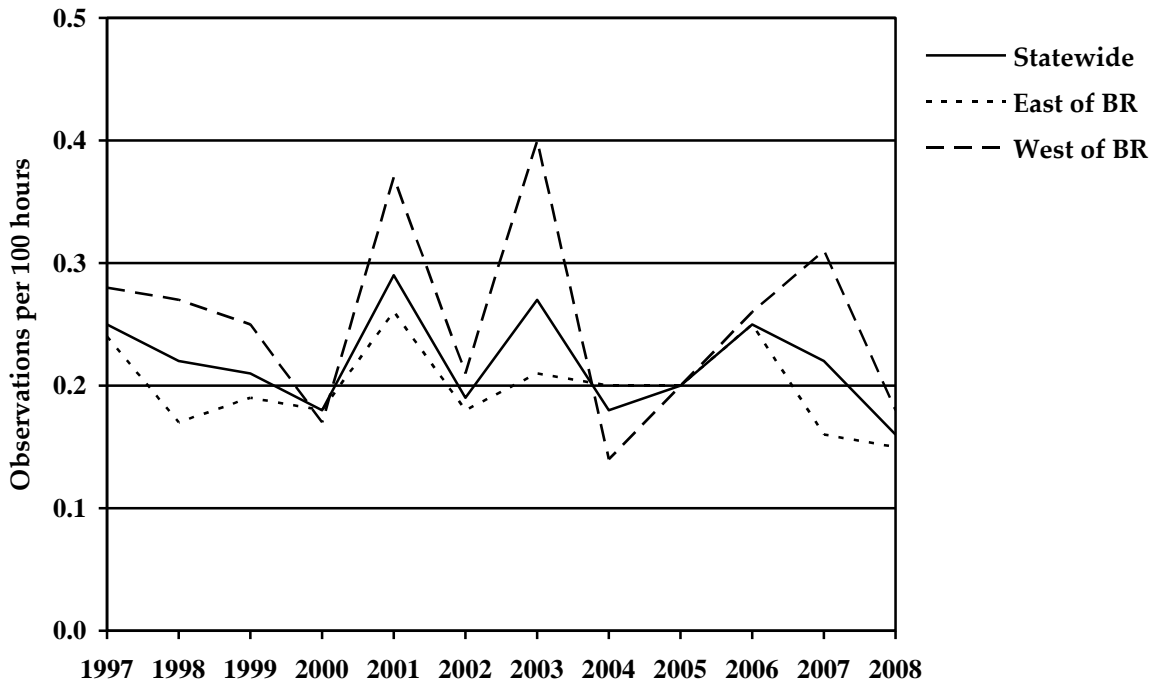


Figure 24. Bobcats observed (per 100 hours of hunting) by cooperating early archery hunters from 1997-2008 east and west of the Blue Ridge Mountains and statewide in Virginia.

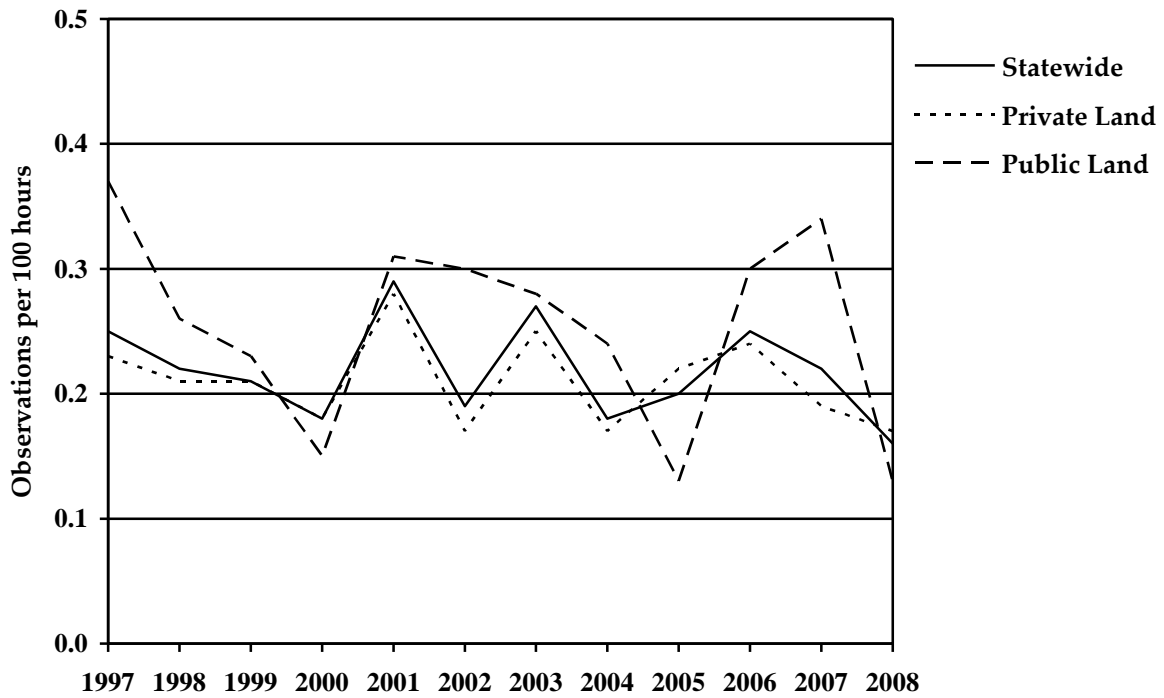


Figure 25. Bobcats observed (per 100 hours of hunting) by cooperating early archery hunters from 1997-2008 by land ownership and statewide in Virginia.

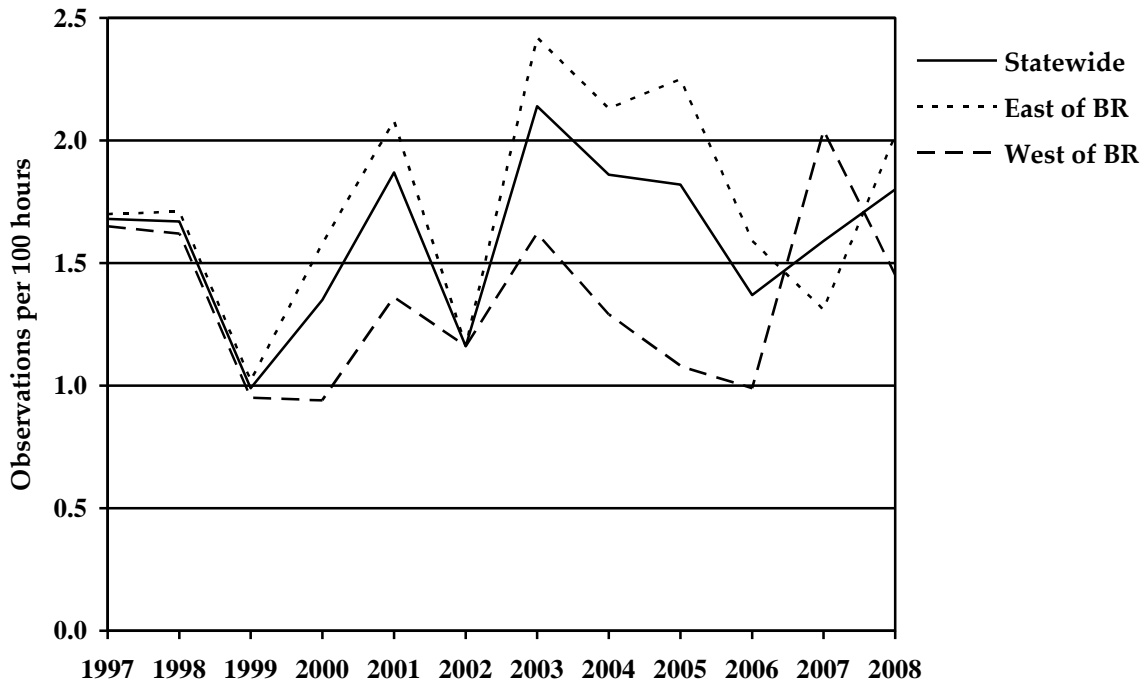


Figure 26. Raccoons observed (per 100 hours of hunting) by cooperating early archery hunters from 1997-2008 east and west of the Blue Ridge Mountains and statewide in Virginia.

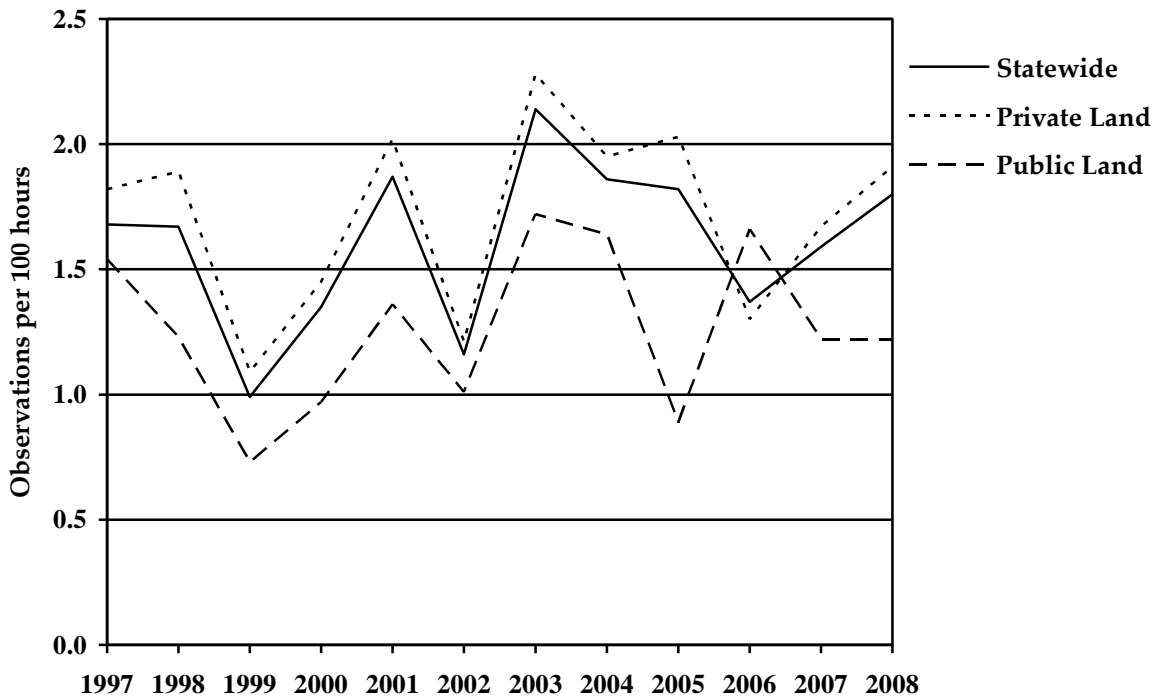


Figure 27. Raccoons observed (per 100 hours of hunting) by cooperating early archery hunters from 1997-2008 by land ownership and statewide in Virginia.

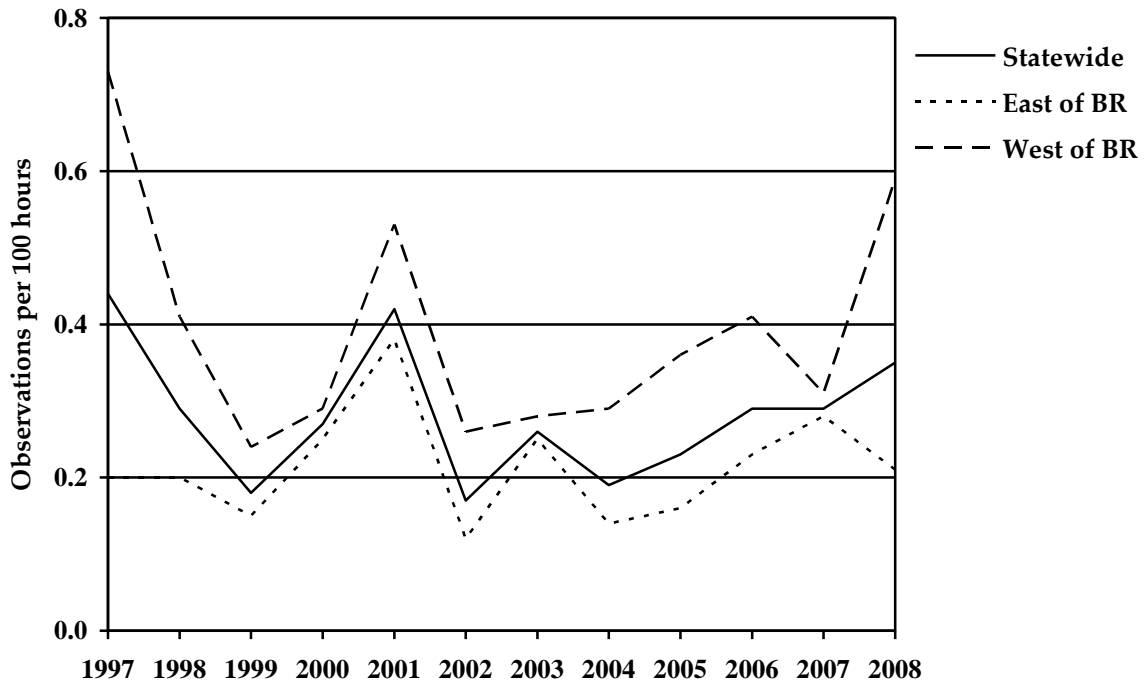


Figure 28. Opossums observed (per 100 hours of hunting) by cooperating early archery hunters from 1997-2008 east and west of the Blue Ridge Mountains and statewide in Virginia.

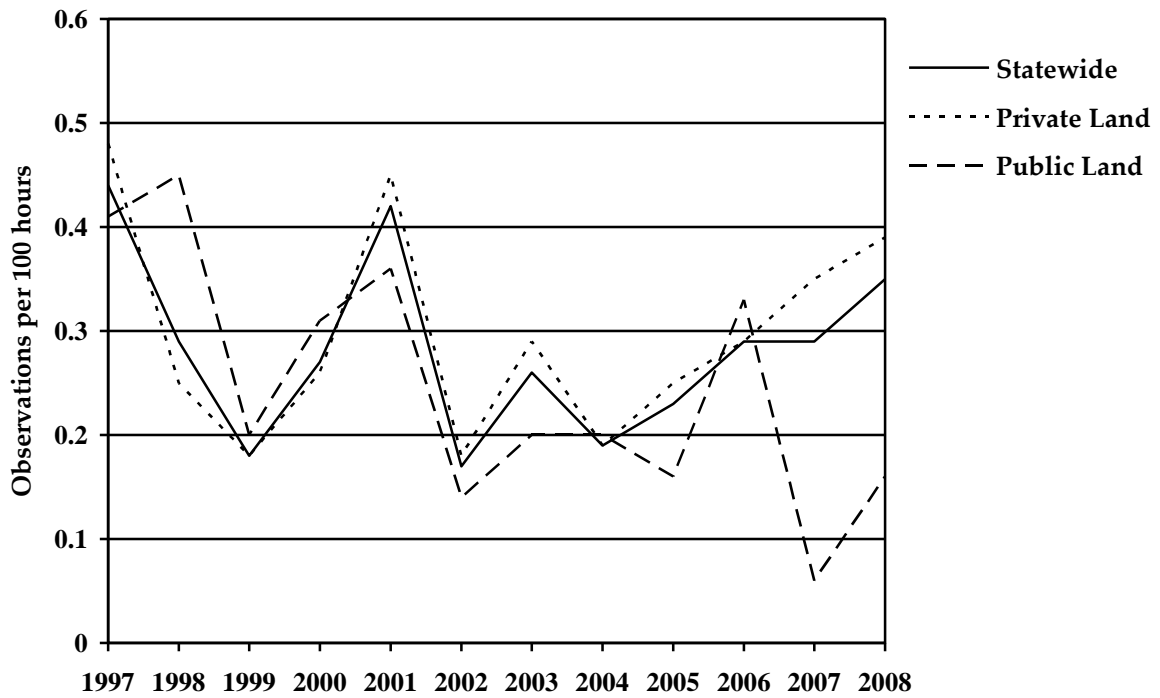


Figure 29. Opossums observed (per 100 hours of hunting) by cooperating early archery hunters from 1997-2008 by land ownership and statewide in Virginia.

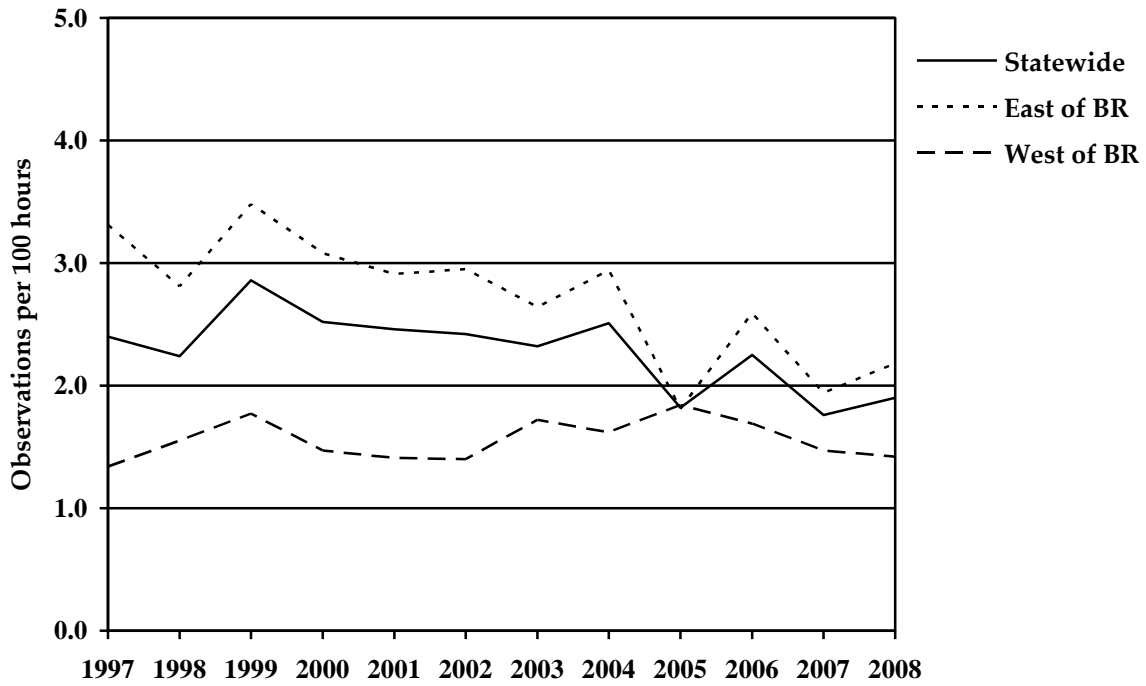


Figure 30. Dogs observed (per 100 hours of hunting) by cooperating early archery hunters from 1997-2008 east and west of the Blue Ridge Mountains and statewide in Virginia.

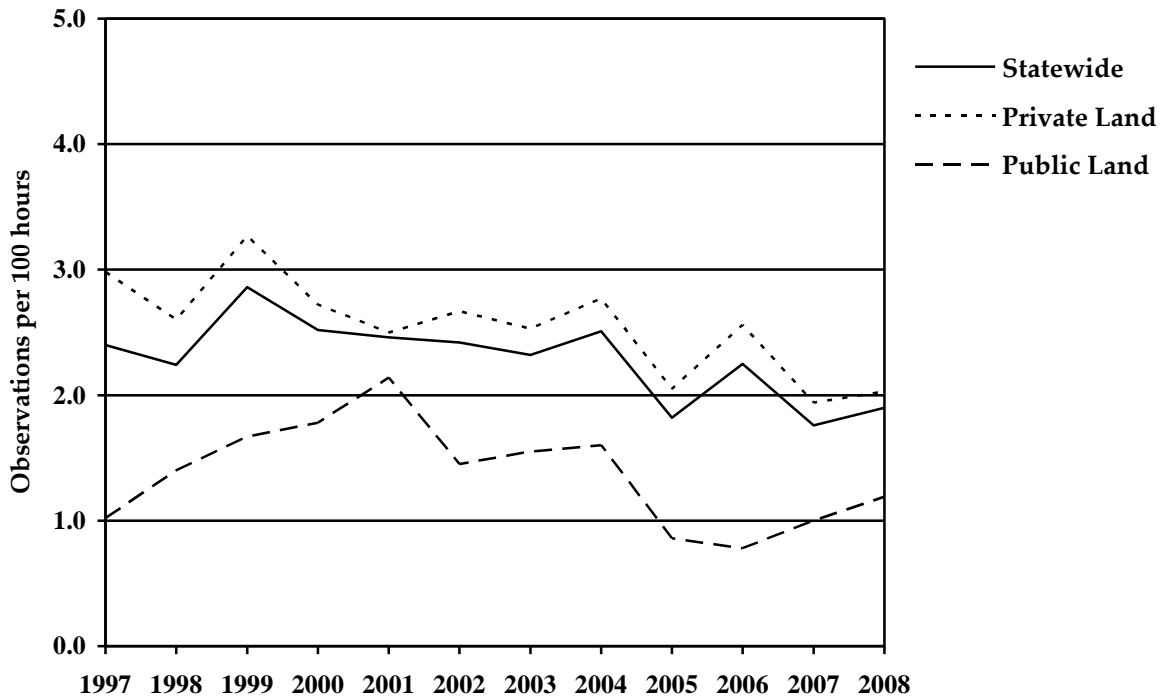


Figure 31. Dogs observed (per 100 hours of hunting) by cooperating early archery hunters from 1997-2008 by land ownership and statewide in Virginia.

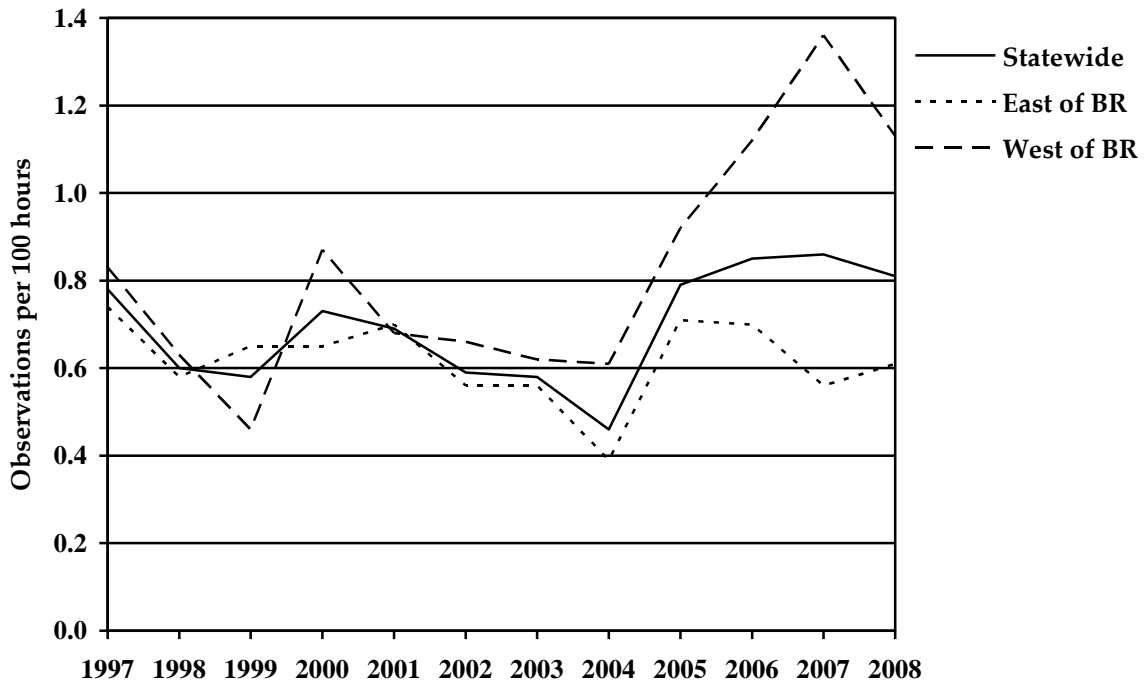


Figure 32. House cats observed (per 100 hours of hunting) by cooperating early archery hunters from 1997-2008 east and west of the Blue Ridge Mountains and statewide in Virginia.

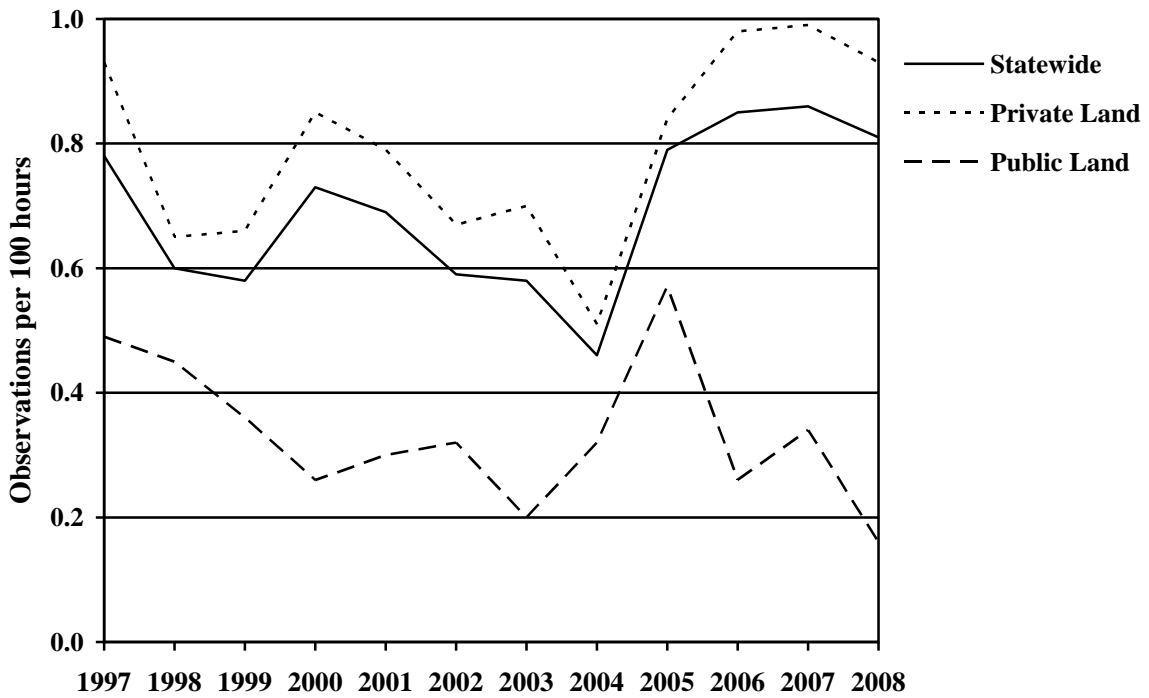


Figure 33. House cats observed (per 100 hours of hunting) by cooperating early archery hunters from 1997-2008 by land ownership and statewide in Virginia.



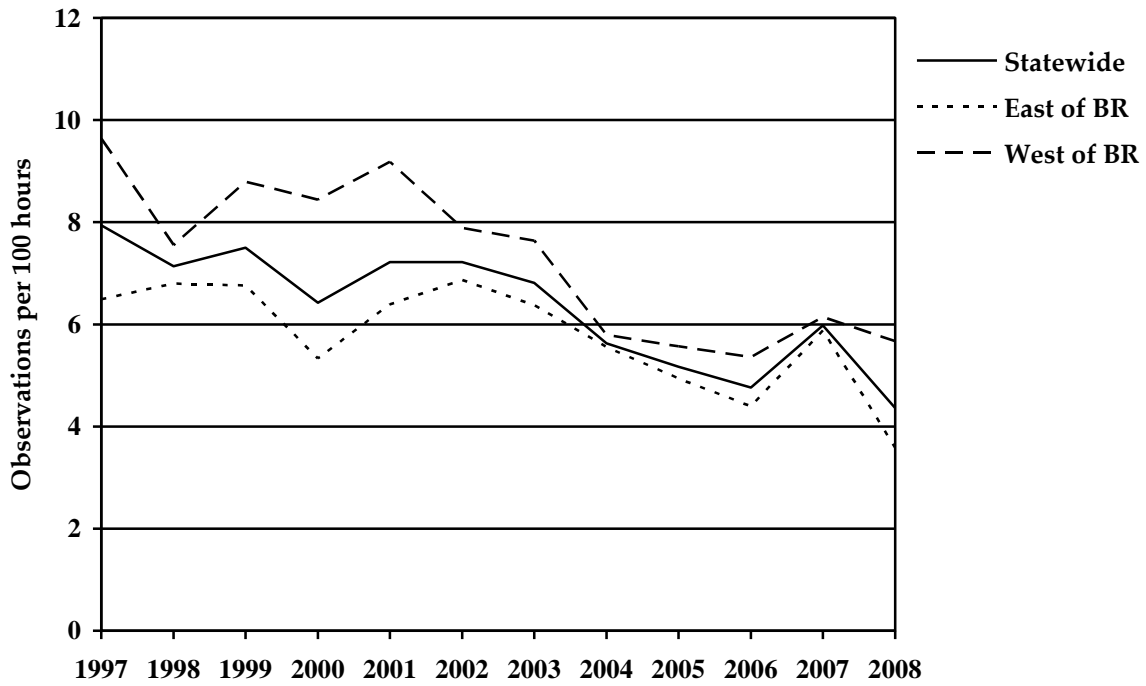


Figure 34. Hunters observed (per 100 hours of hunting) by cooperating early archery hunters from 1997-2007 east and west of the Blue Ridge Mountains and statewide in Virginia.

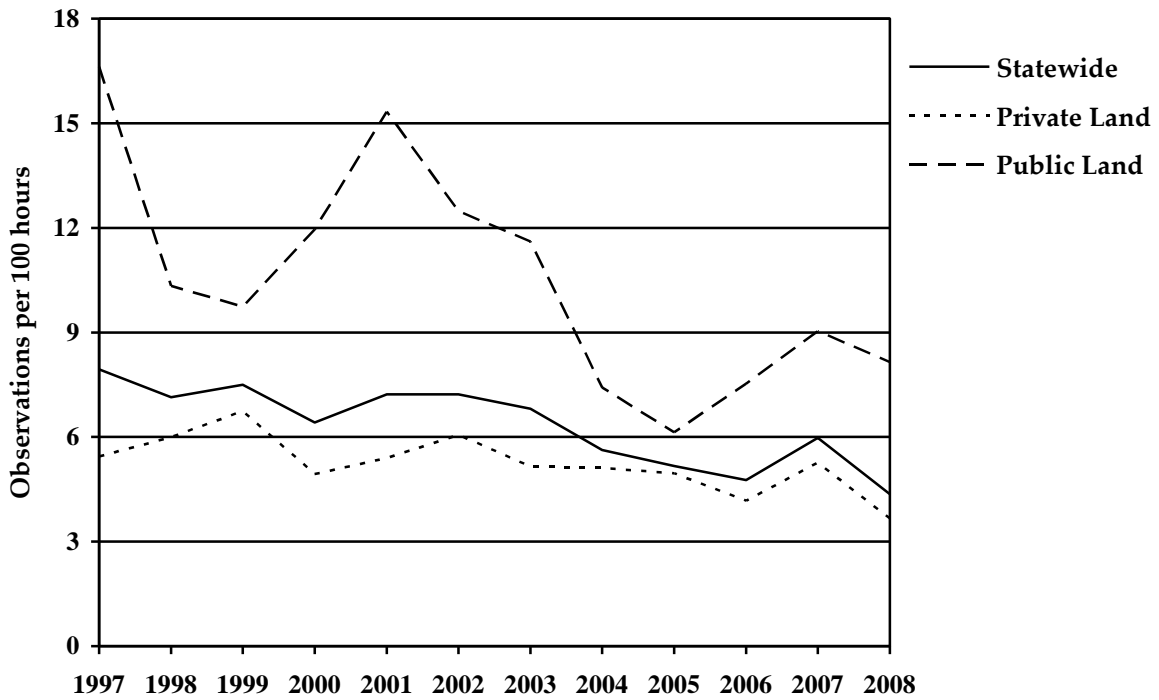


Figure 35. Hunters observed (per 100 hours of hunting) by cooperating early archery hunters from 1997-2008 by land ownership and statewide in Virginia.



**INSTRUCTIONS**

1. If you wish to participate in next years survey, and do not wish to maintain your confidentiality, please fill in your name and address at the top of the form and in the return address box below.
2. Enter *number of hours* for each *date* you hunted **between Oct. 4 and Nov. 14** (early season) **only**.
3. Write in the *county* where you hunted. If you hunted in more than one county on one day, record different counties on different lines of the form.
4. Report whether or not you are hunting on *publicly owned land* (state or federal).
5. Enter the *number* of animals and other hunters you observed while hunting. Begin observations upon leaving your vehicle and end observations when you return to your vehicle.
6. If you saw a species *not listed* at the top of the chart, enter the *name* and *number* of animals in the "Other Animals" column near the right side of the form.
7. On the last four columns of the chart, record the *mast conditions* and *average weather* conditions for the time period you hunted. Use the *numbers (codes)* given at the top right corner of the form.
8. *Fold* this form along the lines below so that our address shows, and *tape* it together.
9. Please *mail* this form to us by **January 1, 2009**. *No postage is needed*.

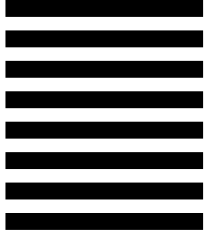


NO POSTAGE  
NECESSARY  
IF MAILED  
IN THE  
UNITED STATES

**BUSINESS REPLY MAIL**  
FIRST CLASS PERMIT NO. 3 VERONA, VA

POSTAGE WILL BE PAID BY ADDRESSEE

VIRGINIA BOWHUNTER SURVEY  
VA DEPT OF GAME AND INLAND FISHERIES  
PO BOX 996  
VERONA VA 24482-9901



Name: \_\_\_\_\_  
Address: \_\_\_\_\_  
City/Town: \_\_\_\_\_

If you wish to continue to participate in the Virginia Bowhunter Survey, and do not wish to maintain confidentiality, please enter your name and address in the return address box. Thank you.

RETURN ADDRESS (OPTIONAL).

DO YOU KNOW OF OTHER HUNTERS WHO WOULD LIKE TO PARTICIPATE IN THE BOWHUNTER SURVEY? IF SO, PLEASE ENTER THEIR NAMES AND ADDRESSES BELOW:

Name: \_\_\_\_\_  
Address: \_\_\_\_\_  
City/Town: \_\_\_\_\_

Name: \_\_\_\_\_  
Address: \_\_\_\_\_  
City/Town: \_\_\_\_\_

**THANK YOU FOR PARTICIPATING!!**

Appendix 3. Virginia counties hunted, hunts per county, and percentage of total state hunts per county by cooperating archery hunters 4 October to 14 November 2008 in Virginia.

County	No. Hunts	% of Hunts	County	No. Hunts	% of Hunts
Accomack	63	1.33	King William	72	1.52
Albemarle	106	2.24	Lancaster	66	1.39
Alleghany	23	0.49	Lee	36	0.76
Amelia	8	0.17	Loudoun	70	1.48
Amherst	62	1.31	Louisa	1	0.02
Appomattox	10	0.21	Lunenburg	22	0.46
Augusta	74	1.56	Madison	3	0.06
Bath	23	0.49	Mathews	11	0.23
Bedford	155	3.27	Mecklenburg	30	0.63
Bland	36	0.76	Middlesex	4	0.08
Botetourt	55	1.16	Montgomery	73	1.54
Brunswick	63	1.33	Nelson	29	0.61
Buchanan	17	0.36	New Kent	67	1.41
Buckingham	6	0.13	Northampton	41	0.87
Campbell	28	0.59	Northumberland	8	0.17
Caroline	39	0.82	Nottoway	25	0.53
Carroll	90	1.90	Orange	63	1.33
Charles City	64	1.35	Page	33	0.70
Charlotte	19	0.40	Patrick	54	1.14
Chesapeake	4	0.08	Pittsylvania	125	2.64
Chesterfield	93	1.96	Powhatan	16	0.34
Clarke	22	0.46	Prince Edward	18	0.38
Craig	22	0.46	Prince George	72	1.52
Culpeper	20	0.42	Prince William	74	1.56
Cumberland	41	0.87	Pulaski	28	0.59
Dickenson	25	0.53	Rappahannock	58	1.22
Dinwiddie	41	0.87	Richmond	11	0.23
Essex	55	1.16	Roanoke	61	1.29
Fairfax	79	1.67	Rockbridge	137	2.89
Fauquier	144	3.04	Rockingham	170	3.59
Floyd	90	1.90	Russell	26	0.55
Fluvanna	27	0.57	Scott	31	0.65
Franklin	89	1.88	Shenandoah	223	4.71
Frederick	41	0.87	Smyth	46	0.97
Giles	67	1.41	Southampton	115	2.43
Gloucester	6	0.13	Spotsylvania	24	0.51
Goochland	17	0.36	Stafford	24	0.51
Grayson	27	0.57	Suffolk	16	0.34
Greene	10	0.21	Surry	85	1.80
Greensville	22	0.46	Sussex	40	0.84
Halifax	68	1.44	Tazewell	33	0.70
Hanover	27	0.57	Virginia Beach	19	0.40
Henrico	21	0.44	Warren	59	1.25
Henry	68	1.44	N. News / Hampton	2	0.04
Highland	38	0.80	Washington	89	1.88
Isle of Wight	40	0.84	Westmoreland	65	1.37
James City	13	0.27	Wise	4	0.08
King & Queen	28	0.59	Wythe	62	1.31
King George	103	2.18	York	5	0.11