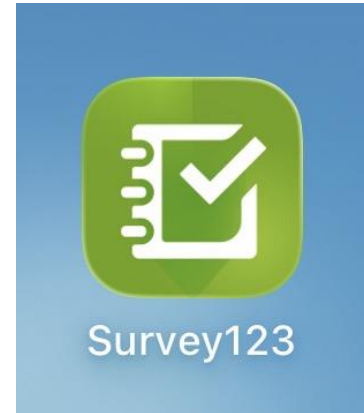


Bowhunter Survey Instructions – Survey123 Mobile App

- 1 Download the app from your app store.

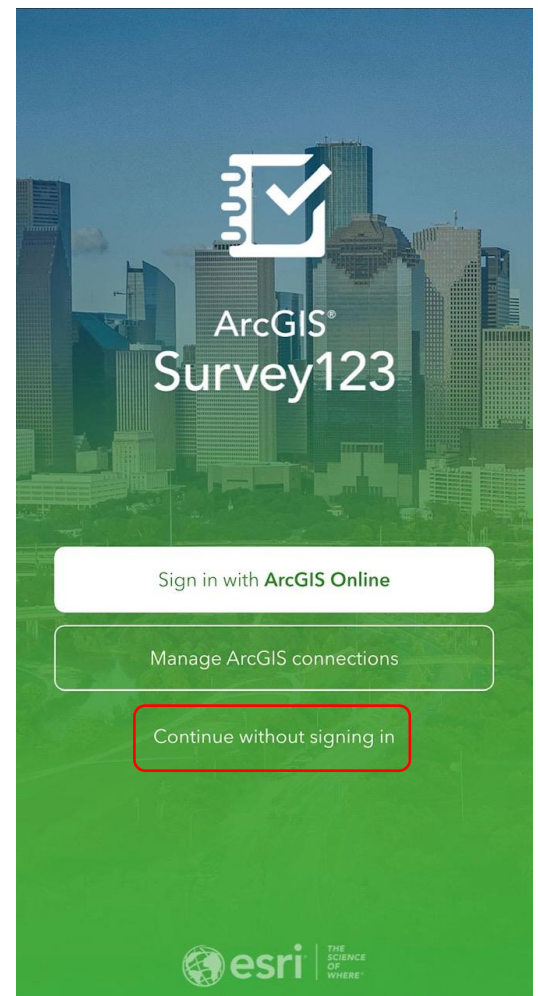
The icon will look like this:



- 2 QR Code for mobile app version of the survey:

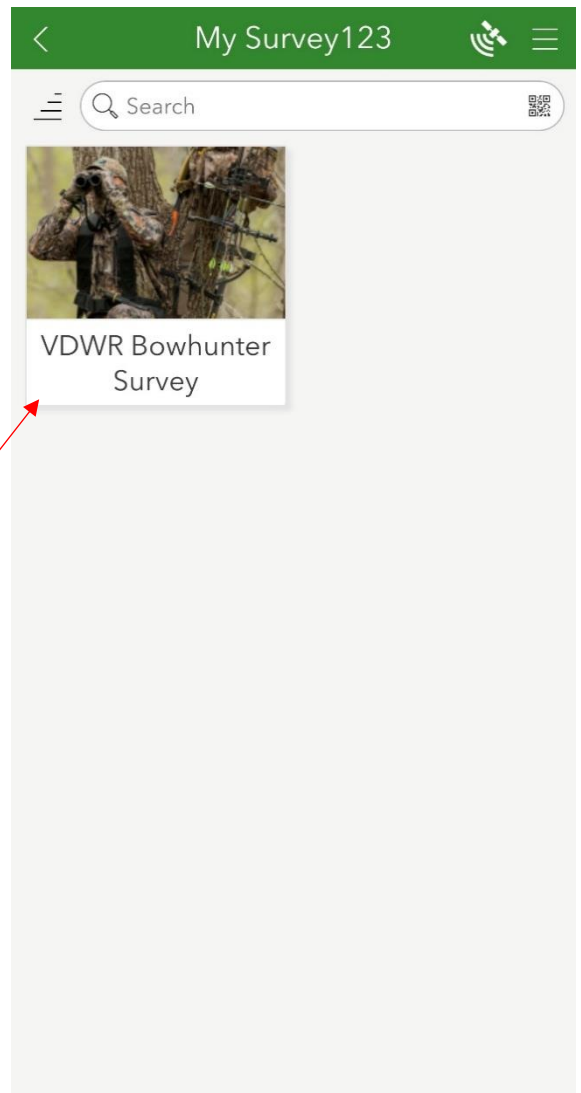


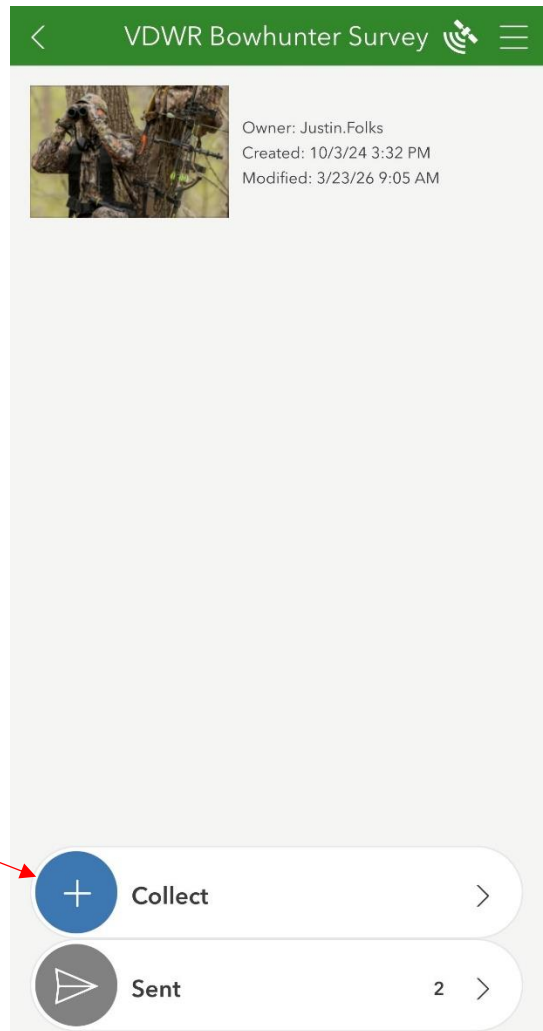
- 3 When you open the app, this is the first screen you'll see. If you don't have an ArcGIS Online account (not required), touch "Continue without signing in."



The first time you complete a survey in the app after scanning the QR code, it will bypass this screen and go directly to the survey. When you open the survey for the first time, the app will download it locally.

4 After downloaded, just open the app and you'll see the survey located here. Select it to continue.





To being recording observation data,
touch "+ Collect."

5

Previously submitted surveys will be
found in "Sent."

6

All of the information on the first page of the survey is required. When complete, hit the “>” arrow in the bottom right corner to advance to page 2.

2026 Bowhunter Survey

General Information

Name *
Robin Hood

Email Address *
DWR may email you regarding the survey
Nockbuster11@dwr.net

Date of Hunt *
Saturday, October 17, 2026

Location of Hunt *
Augusta County 015

Was this Hunt of Public Land? *
 Yes No

1 of 3 >

7

Enter the number of each type of animal observed during your hunt, or use the “+” and “-“ buttons to increase or decrease the number as you hunt.

Scroll down the page to see all species for which you can record observations. When finished, touch the “>” button at the bottom right to advance. If you need to return to the previous page, touch the “<” button.

2026 Bowhunter Survey

Species Observation

▼ **Deer**

Deer - Antlered
- 2 ⊗ +

Deer - Does
- 3 ⊗ +

Deer - Fawn
- 5 ⊗ +

Deer - Unknown
- 1 ⊗ +

▼ **Bear**

Bear - Adult
- 0 ⊗ +

Bear - Cub
- 0 ⊗ +

▼ **Turkey**

Turkey - Bearded

< 2 of 3 >

8

Select the appropriate hunt conditions (acorn crop, precipitation, wind, and temperature) and then enter the number of hours hunted that day.

Note If hunting in the morning and evening in the same county, do not record those hunts separately—record the total number of hours hunted. If you hunted the morning in one county and the evening in a different county or vice versa, record as two separate hunts. When finished, touch the check mark in the bottom right corner.

2026 Bowhunter Survey

Hunt Conditions

Acorn Crop *

None Light Moderate Heavy

Precipitation *

None Drizzle Moderate Heavy

Wind *

None Light Breezy Strong

Temperature *

<40 F 40 - 70 F > 70 F

Number of Hours Hunted *

Total number of hours hunted on this day in this county.

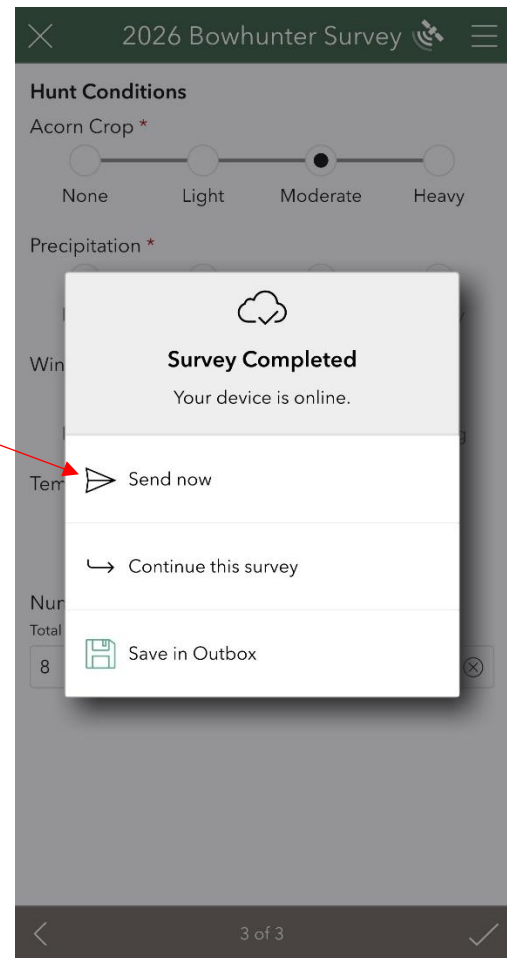
8

< 3 of 3 ✓

If you're finished, touch "send now" to submit the survey.

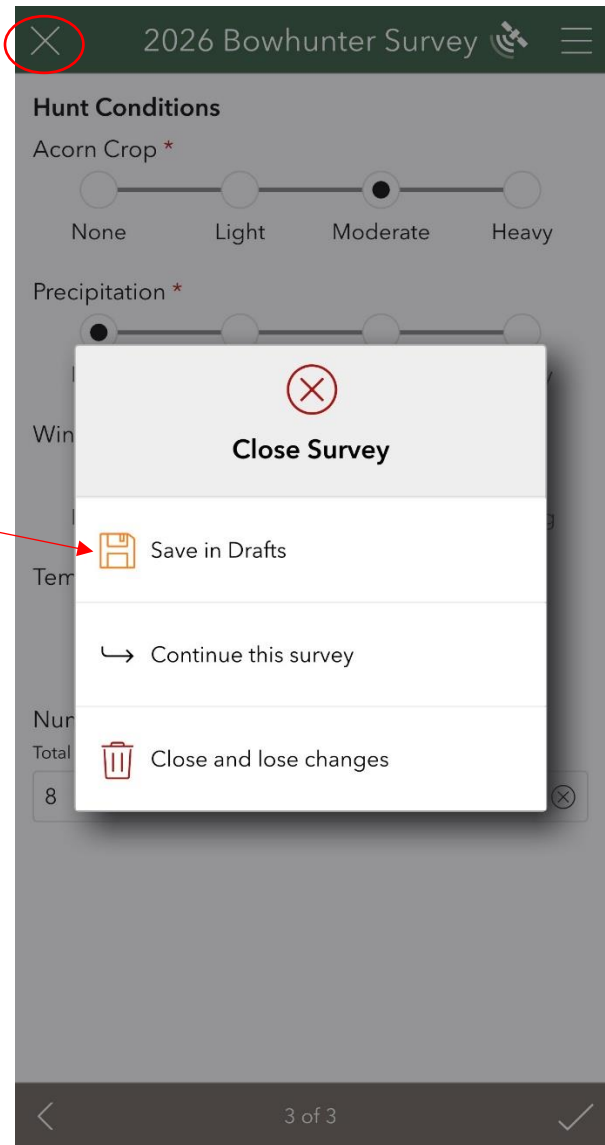
9 If you need to edit something, touch "continue this survey" to go back.

If you want to save and submit later, touch "save in outbox."



If at any point you need to close out of the survey or wish to continue it later, touch the “X” in the top left corner and select “save in drafts.”

- 10** For example, if you complete a morning hunt and want to save your progress until your evening hunt, save the draft and then open it again during your evening hunt to continue recording observations.



11

Saved drafts will appear on this screen. To open a draft and continue recording data, open “Drafts” and select the appropriate survey from the list.

