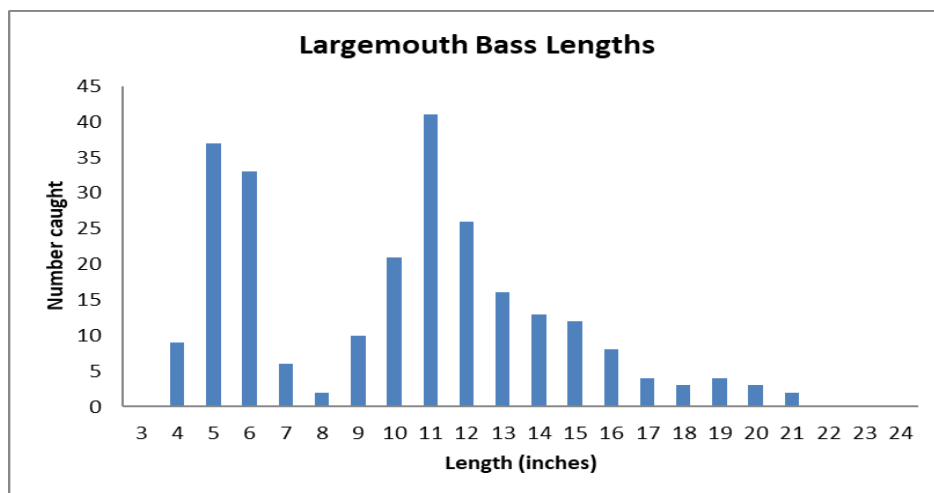




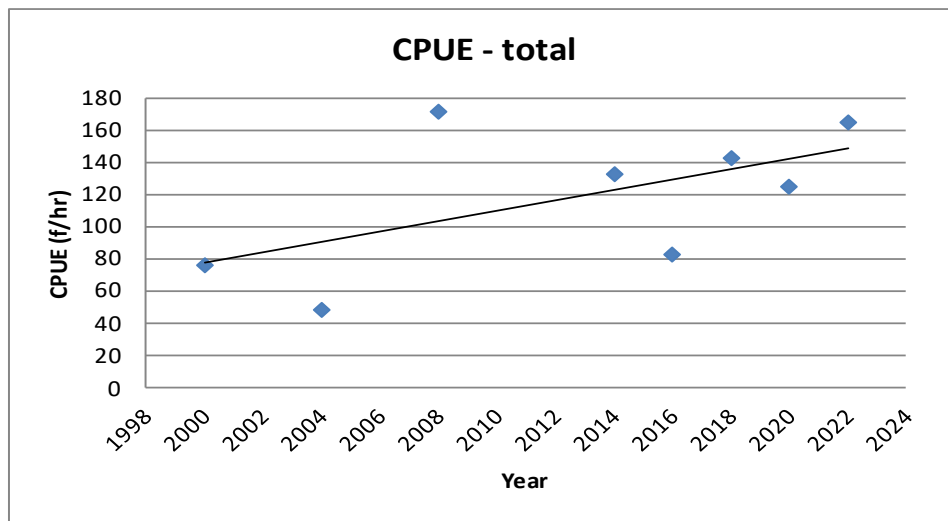
Brunswick Lake 2023

Brunswick Lake (often referred to as County Pond) is a 150-acre lake located 6 miles east of Lawrenceville, Virginia in Brunswick County. There is a concrete boat ramp, parking lot, and courtesy pier which can be accessed on Route 638, north of Route 58. The lake is owned by the Virginia Department of Wildlife Resources (VDWR) and is managed specifically for fishing. The lake has populations of Largemouth Bass, Bluegill, Redear Sunfish, Black Crappie, Yellow Perch, and Chain Pickerel. The VDWR also stocks Channel Catfish annually to maintain a fishery as this species does not normally reproduce on their own in smaller lakes. The lake is open 24 hours for fishing. Prohibited activities include camping, open air fires, hunting, trapping, trot lines, sailboats, swimming, littering, and alcohol. Boats are restricted to electric motor use only. Boaters should be alert as Lake Brunswick is relatively shallow and has numerous stumps which are great fish habitat but can be hazardous. The VDWR owns a 20-foot strip of land above full pool so anglers can park at the VDWR parking lot and fish along the shoreline.

Largemouth Bass are the most popular fishery for Lake Brunswick anglers. The population has good numbers of Largemouth Bass with densities being average to slightly above average for Southside Virginia lakes. The most recent sample in 2022 produced many bass over 18 inches and some over 6 pounds. There are good numbers of bass between 12 and 15 inches and those fish will keep anglers busy at Brunswick. Another positive note is that good numbers of smaller bass continue to enter the fishery ensuring that the future of the fishery is bright.



Biologists track the largemouth population health with an index called catch-per-unit-effort or CPUE. This index is tracked using sampling gear that targets bass and other species while they are close to shore for the spring spawn. Any measure of bass over 100 fish per sample hour (f/hr) is considered good. With total CPUE's above 160 bass per hour and an overall increasing trend in bass abundance since 2000, the bass fishery is in good shape at Brunswick.



The largemouth bass population in Lake Brunswick is currently managed with a 14–18-inch protective slot limit (no largemouth bass between 14 and 18 inches may be retained) and a 5 fish daily creel limit. This regulation is designed to allow some harvest of smaller bass which releases energy for bigger bass and allows them to put on even more growth. Early spring is the best time to catch big bass but anglers should also have success during the heat of the summer by fishing early and late in the day. Shoreline trees have been felled in parts of the lower lake to provide cover for fish species to use and anglers to target fishing. These structure often hold large bass so look for those opportunities. Biologists will continue to monitor this population to assure that it remains a healthy fishery.

Bluegill are by far the most abundant sunfish in Brunswick. Anglers may also catch Redear Sunfish (shellcrackers) and Black Crappie but sizes have been small (< 8 inches). An increase in the number of Largemouth Bass could increase predation on sunfish and improve their size. Beginning in mid-April, anglers should be able to catch a lot of bream as they move into shore to spawn. Live bait such as crickets and worms work great on panfish but fly anglers can also have a lot of fun throwing popping bugs.

Statewide regulations apply to all other species found in Brunswick Lake except Channel Catfish. These are protected by a 15-inch minimum length limit, 8 fish/day creel limit to allow time for growth following annual stockings. Statewide regulations apply to all other species found in Brunswick Lake.