

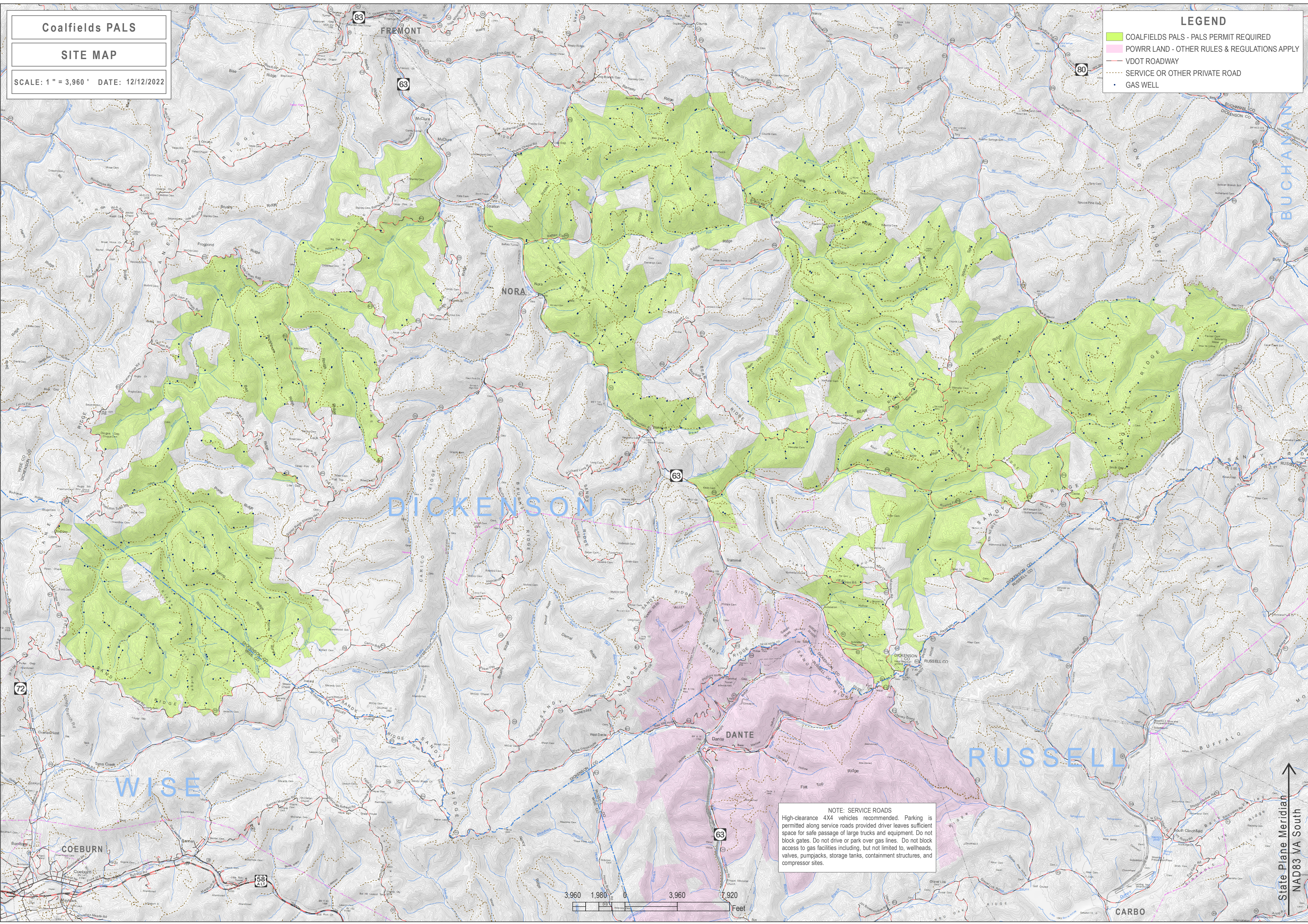
Coalfields PALS

SITE MAP

SCALE: 1" = 3,960' DATE: 12/12/2022

LEGEND

- COALFIELDS PALS - PALS PERMIT REQUIRED
- POWRR LAND - OTHER RULES & REGULATIONS APPLY
- VDOT ROADWAY
- SERVICE OR OTHER PRIVATE ROAD
- GAS WELL



NOTE: SERVICE ROADS
High-clearance 4X4 vehicles recommended. Parking is permitted along service roads provided driver leaves sufficient space for safe passage of large trucks and equipment. Do not block gates. Do not drive or park over gas lines. Do not block access to gas facilities including, but not limited to, wellheads, valves, pumpjacks, storage tanks, containment structures, and compressor sites.

State Plane Meridian
NAD83 VA South