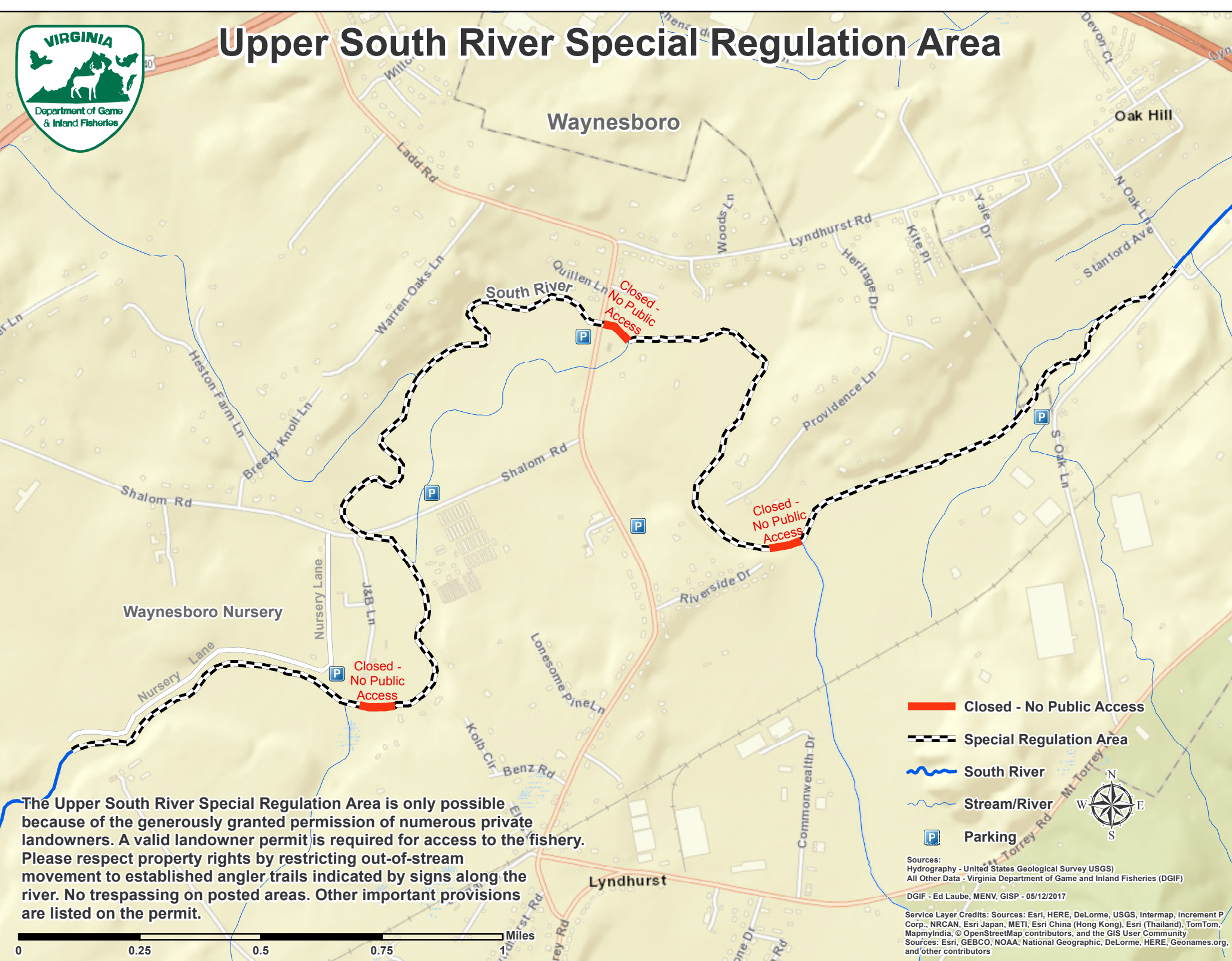




Upper South River Special Regulation Area



The Upper South River Special Regulation Area is only possible because of the generously granted permission of numerous private landowners. A valid landowner permit is required for access to the fishery. Please respect property rights by restricting out-of-stream movement to established angler trails indicated by signs along the river. No trespassing on posted areas. Other important provisions are listed on the permit.

- Closed - No Public Access
- Special Regulation Area
- South River
- Stream/River
- Parking

Sources:
Hydrography - United States Geological Survey (USGS)
All Other Data - Virginia Department of Game and Inland Fisheries (DGIF)
DGIF - Ed Laube, MENV, GISP - 05/12/2017

Service Layer Credits: Sources: Esri, HERE, DeLorme, USGS, Intermap, increment P Corp., NRCAN, Esri Japan, METI, Esri China (Hong Kong), Esri (Thailand), TomTom, MapmyIndia, © OpenStreetMap contributors, and the GIS User Community
Sources: Esri, GEBCO, NOAA, National Geographic, DeLorme, HERE, Geonames.org, and other contributors